

Public Document Pack

Penallta House,
Tredomen Park,
Ystrad Mynach,
Hengoed CF82 7PG

Ty Penallta,
Parc Tredomen,
Ystrad Mynach,
Hengoed CF82 7PG



www.caerphilly.gov.uk
www.caerffili.gov.uk

For all enquiries relating to this agenda please contact Emma Sullivan
(Tel: 01443 864420 Email: sullie@caerphilly.gov.uk)

Date: 7th October 2021

Dear Sir/Madam,

A digital meeting of the **Cabinet** will be held via Microsoft Teams on **Wednesday, 13th October, 2021** at **10.30 am** to consider the matters contained in the following agenda. You are welcome to use Welsh at the meeting, a minimum notice period of 3 working days is required should you wish to do so.

This meeting will be recorded and made available to view via the Council's website, except for discussions involving confidential or exempt items. Therefore the images/audio of those individuals present and/or speaking at Cabinet will be publicly available to all via the recording on the Council website at www.caerphilly.gov.uk

Yours faithfully,

A handwritten signature in black ink, appearing to read 'Christina Harrhy'.

Christina Harrhy
CHIEF EXECUTIVE

AGENDA

	Pages	
1	To receive apologies for absence.	
2	Declarations of Interest.	

Councillors and Officers are reminded of their personal responsibility to declare any personal and/or prejudicial interest(s) in respect of any item of business on the agenda in accordance with the Local Government Act 2000, the Council's Constitution and the Code of Conduct for both Councillors and Officers.

A greener place Man gwyrddach



To approve and sign the following minutes: -

3 Cabinet held on 29th September 2021. 1 - 6

To note the Cabinet Forward Work Programme.

4 Cabinet Forward Programme. 7 - 12

To receive and consider the following reports on which executive decisions are required: -

5 Car Parking at the Twyn, Caerphilly and Rear of High Street, Blackwood. 13 - 18

6 21st Century Schools and Colleges Band B Programme - Update on Phase 2. 19 - 26

7 Write-Off Debts Over £20,000 - Business Rates Arrears for Limited Companies. 27 - 32

8 Proposal to Develop Two New Respite Facilities. 33 - 38

9 Outcome of Public Consultation on a Proposed Community Hall in Ty Sign, Risca. 39 - 120

10 Regeneration Board - Project Proposals. 121 - 132

Circulation:

Councillors S. Cook, N. George, C.J. Gordon, P.A. Marsden, L. Phipps, J. Pritchard, Mrs E. Stenner, A. Whitcombe and R. Whiting

And Appropriate Officers

HOW WE WILL USE YOUR INFORMATION

Those individuals that attend committee meetings to speak/give evidence will be named in the minutes of that meeting, sometimes this will include their place of employment or business and opinions expressed. Minutes of Meetings including details of speakers will be publicly available to all via the Council website at www.caerphilly.gov.uk. except for discussions involving confidential or exempt items.

You have a number of rights in relation to your information, including the rights of access to information we hold about you and the right of complaint if you are unhappy with the way your information is being processed.

For further information on how we process your information and your rights please view the [Full Committee Meetings Privacy Notice](#) on our website or contact Legal Services by email griffd2@caerphilly.gov.uk or telephone 01443 863028.

Agenda Item 3



CABINET

MINUTES OF THE REMOTE MEETING HELD VIA MICROSOFT TEAMS ON WEDNESDAY, 29TH SEPTEMBER 2021 AT 10.30 A.M.

PRESENT:

Councillor P. Marsden (Leader) - Chair

Councillors:

S. Cook (Social Care), N. George (Waste, Public Protection and Street Scene), C. Gordon (Corporate Services), L. Phipps (Housing), J. Pritchard (Infrastructure and Property), E. Stenner (Performance, Economy and Enterprise), A. Whitcombe (Sustainability, Planning and Fleet) and R. Whiting (Learning and Leisure).

Together with:

D. Street (Corporate Director Social Services and Housing), R. Edmunds (Corporate Director Education and Corporate Services) and M.S. Williams (Corporate Director – Economy and Environment), S. Harris (Head of Financial Services and Section 151 Officer).

Also in Attendance:

R. Tranter (Head of Legal Services and Monitoring Officer), L. Donovan (Head of People Services), L. Lucas (Head of Customer and Digital Services), F. Wilkins (Housing Services Manager), P. O' Neill (Senior Youth Services Manager), P. Warren (Strategic Leader for School Improvement) M. Harris (Committee Services Support Officer/Chauffeur) and E. Sullivan (Senior Committee Services Officer).

RECORDING AND VOTING ARRANGEMENTS

The Leader reminded those present that the meeting was being filmed but would not be live streamed, however a recording would be available following the meeting via the Council's website – [Click Here To View](#). She advised that decisions would be made by Microsoft Forms.

1. APOLOGIES FOR ABSENCE

An apology for absence was received from C. Harry (Chief Executive).

2. DECLARATIONS OF INTEREST

There were no declarations of interest made at the beginning or during the course of the meeting.

3. CABINET – 15th SEPTEMBER 2021

RESOLVED that the minutes of the meeting held on 15th September 2021 were approved as a correct record.

4. CABINET FORWARD WORK PROGRAMME – TO NOTE

Cabinet were provided with the Cabinet Forward Work Programme, which detailed the scheduled reports until 24th November 2021. Members were reminded that the Cabinet Forward Work Programme is a working document and therefore subject to change.

Following consideration and discussion, it was moved and seconded that the Forward Work Programme be noted. By a show of hands this was unanimously agreed.

RESOLVED that the Cabinet Forward Work Programme be noted.

5. WORKFORCE DEVELOPMENT STRATEGY 2021-24

Cabinet noted that the report had been presented to the Policy and Resources Scrutiny Committee at its meeting on the 28th September 2021 and the Policy and Resources Scrutiny Committee had unanimously supported the Strategy without amendment.

Consideration was then given to the report which sought Cabinet approval for the Workforce Development Strategy 2021-24. The Team Caerphilly-Better Together Transformation Strategy was adopted by Cabinet on the 12th June 2021, as part of this Strategy, ten corporate reviews were being undertaken and Workforce Development was noted to be one of these reviews.

The Workforce Development Strategy was an action arising from this review and seeks to support the Council's employees to maximise their capabilities, effectiveness and resilience to aid the re-purposing and re-shaping of our services in response to the many challenges faced by the Council moving forward.

Cabinet noted that the Strategy had been supported by GMB, Unison and Unite Trade Unions.

The Head of People Services updated Cabinet on the Scrutiny Committee's comments and advised that these centred on agile working, return to office, wellbeing including mental health, support and training for those working from home, workforce resilience and support for staff with a disability, as the number of staff reported to have a disability is low.

Cabinet welcomed the Strategy as a positive step in supporting the Council's most valuable assets i.e. it's staff.

Following consideration and discussion, it was moved and seconded that the recommendations in the report be approved. By way of electronic voting this was unanimously agreed.

RESOLVED that for the reasons contained in the Officer's report the Workforce Development Strategy 2021-24 be approved.

6. EMPLOYEE WELLBEING STRATEGY 2021-24.

Cabinet noted that the report had been presented to the Policy and Resources Scrutiny Committee at its meeting on the 28th September 2021 and the Policy and Resources Scrutiny Committee had unanimously supported the Strategy without amendment.

Consideration was given to the report which sought Cabinet approval for the Employee Wellbeing Strategy 2021-24. The Team Caerphilly-Better Together Transformation Strategy was adopted by Cabinet on the 12th June 2021, as part of this Strategy, ten corporate reviews were being undertaken and Workforce Development was noted to be one these reviews.

The Wellbeing Strategy was an action arising from this review and details how we achieve our vision: 'Working together to fully support our employees' health and wellbeing.' The Strategy reinforces that our people are at the very heart of everything we do and our continuing success as a Council will be dependent on us promoting and facilitating good health and wellbeing, to enable us to provide excellent services to our communities.

Cabinet noted that the strategy was fully supported by GMB, Unison and Unite Trade Unions.

The Head of People Services referred to the comments of the Policy and Resources Scrutiny Committee when considering the Workforce Development Strategy, in relation to support for staff, particularly regarding wellbeing and mental health, which were acknowledged and addressed in the Wellbeing Strategy. Members referenced sickness absence statistics and sought clarification as to the work being undertaken to reduce absence levels. Scrutiny also sought clarification on Work/Home stress and how these were being differentiated. The Head of People Services confirmed that this was ascertained from information provided by employees. Reference was made to the Staff Survey results and how these would be used to roadmap progress. Cabinet noted that although 25% of responders did not feel the Council were moving in the right direction, 75% of responders felt that the Council were moving in the right direction which was significant and positive. Members felt that further work should be undertaken to explore any underlying issues. Cabinet also noted that 84% felt that they had a good/very good work life balance and felt that this was good to highlight. The positive responses on agile working were welcomed.

The Corporate Director for Social Services and Housing confirmed that the staff survey data was being looked at on a Directorate by Directorate basis in order to identify any potential 'hot spots' and make a comparison with the rest of the Council in order to provide a better overview.

The Corporate Director for Education and Corporate Services placed on record his thanks to the Head of People Services and her Team for all their hard work in the preparation of both strategies during the most challenging period. Cabinet added their thanks to those of the Corporate Director and recognised the efforts of all those involved.

Following consideration and discussion, it was moved and seconded that the recommendation in the report be approved. By way of electronic voting this was unanimously agreed.

RESOLVED that for the reasons contained in the Officer's report the Employee Wellbeing Strategy 2021-21 be approved.

7. CHRISTMAS CLOSE DOWN ARRANGEMENTS 2021

Consideration was given to the report which sought Cabinet approval for the implementation of a closedown for Officers over the Christmas period.

Cabinet welcomed the report and its recommendations as a way to recognise the exceptional commitment of staff who had worked so hard during the pandemic.

Clarification was sought as to how staff not on the clocking system would benefit from the 2 hours credit. The Head of People Services confirmed that there was an opportunity for staff whose rotas did not support the credit to have the 2 hours paid rather than the credit so that they did not lose out.

Cabinet felt that the increase in carry over leave for this year only would also be supportive for those staff who for service reasons would not be able to take the day within this annual leave year.

Following consideration and discussion, it was moved and seconded that the recommendation in the report be approved. By way of electronic voting this was unanimously agreed.

RESOLVED that for the reasons contained in the Officer's report: -

- 3.1.1. The Corporate Offices close at 12 noon on Christmas Eve and reopen on January 4th, 2022 be agreed.
- 3.1.2. All staff receive 2 hours' credit for Christmas Eve as per the arrangements detailed in the report be agreed.
- 3.1.3. All staff receive an additional day annual leave for 2021 be agreed.
- 3.1.4. Carry over annual leave be increased to 6 days for this year only be agreed.

8. SUPPLEMENTARY REPORT – MANAGING BUILDING AND SERVICE RISK AT ALERT LEVEL ZERO

Consideration was given to the report which sought Cabinet approval for the reopening of services to the public.

Cabinet noted that each building would differ in terms of the level of available space, required staffing levels, ventilation, and ability to support separate access and egress. As a result, the risks of reopening buildings that are currently closed will differ depending on a range of local factors. Council buildings currently closed to the public have all been individually risk assessed using the agreed template based on a hierarchy of control framework set out within Welsh Governments latest guidance.

Cabinet welcomed this cautious approach to the reopening of services, safeguarding all aspects for staff and the public as we leave the pandemic. The current position in terms of case incident rates were noted to be far higher than this time last year, evidencing the need for appropriate safeguards to be put in place. Cabinet advised that during the pandemic the public had accessed various services via alternative means, and these would continue to be available.

Officers confirmed that the infection rate was currently at 16.7% - 840 per 100,000, which clearly illustrated that the virus was still very much with us and so it was still vitally important to treat the reopening of buildings sensibly and safely in order to safeguard public and staff health. It was noted that based on data modelling the infection peak had been reached and hopefully coming weeks would seek rates decreasing however we were not out of the woods.

Cabinet agreed the importance of a measured and cautious approach and felt the detail with the templates to be vital as we moved forward and were reassured that further reports would be coming forward as progress was made.

Following consideration and discussion, it was moved and seconded that the recommendation in the report be approved. By way of electronic voting this was unanimously agreed.

RESOLVED that for the reasons contained in the Officer's report: -

- 1) Reopen the Council premises set out in 5.6 in accordance with the templates and recommended controls set out in Appendix 1 be agreed.
- 2) The premises set out in 5.7 should remain closed in accordance with the templates attached at Appendix 2 be agreed.
- 3) The reintroduction of Customer First and Reception provision at Ty Penallta from the 4th October 2021, in accordance with the template and recommended controls set out in Appendix 3 be agreed.
- 4) The reopening recommendations and timescales set out in 5.11 for the remaining Customer First Offices in accordance with the templates set out in Appendix 4 be agreed.
- 5) Cabinet to receive ongoing reports over coming months that outline any further changes that need to be made should the guidance or risk levels change again.

9. MONTCLAIRE AVENUE STREAM WORKS FUNDING BID

Consideration was given to the report which sought to inform Cabinet of the proposals to address extensive scour and loss of riverbank support immediately behind residential properties along Montclair Avenue, Blackwood.

Cabinet noted that whilst these properties were historically Council owned, all but 2 properties had been sold to private owners. While the properties were sold, Caerphilly Council chose to retain the riparian ownership and liability of the watercourse including the banks up to the private property boundaries. The scheme comprises headwalls, canalised and culverted constructions to convey the stream's water to mitigate future detriment to the watercourse and neighbouring properties rear gardens.

It was noted that a potential contribution of £65,000 towards the scheme from the private landowner had been verbally offered and should Cabinet be minded to approve the scheme further negotiations would be undertaken in terms of the liability in accepting this contribution.

Officer's emphasised the extremely time sensitive nature of this long-standing issue and the Monitoring Officer confirmed that because of this and with the agreement of the Mayor, this matter would be treated as urgent and therefore the decision would not be subject to call-in but would be added to the next Council agenda for noting.

Clarification was sought on whether an additional recommendation was warranted in relation to the private landowner negotiations, to award delegated powers to Officers to carry out such negotiations, the Monitoring Officer was of the opinion that this was not necessary as long as Cabinet were content that Officers would carry on with the proposals and any negotiations without a further report to Cabinet.

Cabinet welcomed the proposed scheme which would resolve a long-standing issue for residents and local ward members and agreed that no additional recommendation was required.

It was moved and seconded that the recommendation at 3.1 of the report be amended to read that funding of £1,500,019 be made available from the Housing Revenue Account to deliver the scheme at Montclair Avenue.

Following consideration and discussion, it was moved and seconded that subject to the aforementioned amendment the recommendation in the report be approved. By way of electronic voting this was unanimously agreed.

RESOLVED that for the reasons contained in the Officer's report funding of £1,500,019 be made available from the Housing Revenue Account to deliver the scheme at Montclair Avenue.

The meeting closed at 11.20am

Approved and signed as a correct record subject to any corrections made at the meeting held on 13th October 2021.

CHAIR

Cabinet Forward Work Programme – as at 6th October 2021

13/10/2021 10:30	21st Century Schools – Band B Programme Update	To provide Cabinet with an update on the progress of the 21st Century Schools Band B programme.- Phase 1 & 2.	West, Andrea; Richards, Sue;	Cllr. Whiting, Ross;
13/10/2021 10:30	Car parking at Twyn Car Park and Blackwood High Street Car Park	To consider proposals to manage the interface between business/visitor parking at Twyn Car Park, Caerphilly and Blackwood High Street.	Williams, Mark S;	Cllr. Pritchard, James;
13/10/2021 10:30	Write-off of Debts Over £20,000 – Business Rates Arrears for Limited Companies	To seek Cabinet approval for the write-off of business rate debts for two limited companies where, in each case, the aggregated values per business are greater than £20,000.	Carpenter, John;	Cllr. Stenner, Eluned;
13/10/2021 10:30	Outcome of Public Consultation on a Proposed Community Hall in Ty Sign, Risca	To report on the outcome of a public consultation and to seek the views of Cabinet on the request to lease land at Holly Road, Ty Sign, Risca for the purposes of building a new community hall.	Hartshorn, Robert;	Cllr. George, Nigel;
13/10/2021 10:30	Regeneration Project Board - Project Proposal	Funding from the Regeneration Board is requested to appoint a Multi-Disciplinary consultant team for a period of up to three years to support Council staff and facilitate the delivery of Caerphilly Town 2035	Kyte, Rhian;	Cllr. Stenner, Eluned;

Cabinet Forward Work Programme – as at 6th October 2021

13/10/2021 10:30	New Respite Facilities	To seek Cabinet approval to build two state of the art respite facilities, one for adults and one for children in order to replace existing facilities.	Williams, Jo;	Cllr. Cook, Shayne;
27/10/2021 10:30	Corporate Performance Assessments (CPA's)	To provide Cabinet with information and detailed analysis of performance for the period 01/04/20 to 31/03/21 and forms part of the Council's self-assessment activity.	Richards, Sue;	Cllr. Stenner, Eluned;
27/10/2021 10:30	Local Housing Strategy	To seek Cabinet approval for the acquisition of the former Oakdale School site from the General Fund to the HRA and the development of the site by Willmott Dixon on behalf of Caerphilly Homes.	Roberts-Waite, Jane;	Cllr. Phipps, Lisa;
27/10/2021 10:30	Annual Performance Report and Corporate Plan 2018-2023	For Cabinet to consider the Council's Annual Performance Report which provides information and analysis of performance against the six well-being objectives for the period 01/04/20 to 31/03/21.	Roberts, Ros; Richards, Sue;	Cllr. Stenner, Eluned;
27/10/2021 10:30	Urgent item - Payment to social care providers from WG Recovery Fund	WG funding available to support independent social services providers.	Williams, Jo;	Cllr. Cook, Shayne;

Cabinet Forward Work Programme – as at 6th October 2021

10/11/2021 10:30	Commercial & Investment Strategy	For Cabinet to note the progress made against the actions and success measures within the strategy during the first 12 months To seek an extension of an additional 12 months for the refresh of the Commercial & Investment Strategy to November 2022.	Camp, Victoria;	Cllr. Stenner, Eluned;
10/11/2021 10:30	Homeless Project Plan	To provide Cabinet with the Rapid Rehousing and transitional plan which needs to be submitted to WG by June 2022.	Denman, Kerry;	Cllr. Phipps, Lisa;
10/11/2021 10:30	Dog Control PSPO Proposals	To consider the outcome of a public consultation, together with any recommendations from Scrutiny Committee, on proposals to amend and extend the Public Spaces Protection Order (PSPO) relating to dog control to include the exclusion of dogs from marked sports pitches/areas	Hartshorn, Robert;	Cllr. George, Nigel;
10/11/2021 10:30	ASB/street drinking PSPO	To consider the outcome of a public consultation together, with any recommendations from Scrutiny Committee, on proposals to vary and extend the Public Spaces Protection Orders relating to anti-social behaviour and drinking alcohol in a public place	Hartshorn, Robert;	Cllr. George, Nigel;
10/11/2021 10:30	Town Centre Management Groups	Report on the revised format for the Town Centre Management Group meetings	Wilcox, Steve;	Cllr. Whitcombe, Andrew;

Cabinet Forward Work Programme – as at 6th October 2021

10/11/2021 10:30	George Street Walls, Cwmcarn	To seek approval to deploy Private Sector Housing Capital monies to assist private sector homeowners at George Street, Cwmcarn.	Wilkins, Fiona;	Cllr. Phipps, Lisa;
24/11/2021 10:30	Team Caerphilly Transformation Programme – 6 monthly update	To provide Cabinet with an update on progress against the Team Caerphilly Transformation Strategy	Richards, Sue;	Cllr. Stenner, Eluned;
24/11/2021 10:30	Grass Cutting Regime	To seek the views of Cabinet in relation to grass cutting regimes across the county borough and proposals to enhance and promote bio-diversity following consultation with local members and presentation to Scrutiny Committee.	Hartshorn, Robert;	Cllr. George, Nigel;
24/11/2021 10:30	The principles of a regional approach to employability programme	To consider a regional approach to the provision of employment support programmes within the Cardiff Capital Region.	Kyte, Rhian;	Cllr. Marsden, Philippa;
24/11/2021 10:30	Business Rate Relief - WG Funding'	To seek Cabinet approval of a proposal for the distribution of targeted rated relief.	Carpenter, John;	Cllr. Stenner, Eluned;
08/12/2021 10:30	Oakdale Housing Development	For Cabinet to consider the development options presented by Willmott Dixon on behalf of Caerphilly Homes, on the basis of need and viability with regard to the site of the former Oakdale Comprehensive School.	Roberts-Waite, Jane;	Cllr. Phipps, Lisa;
08/12/2021 10:30	Welsh Education Strategic Plan 2022-2032	For Cabinet to consider and approve the new 10 year plan.	Cole, Keri; Mutch, Sarah;	Cllr. Whiting, Ross;

Cabinet Forward Work Programme – as at 6th October 2021

08/12/2021 10:30	Low Cost Home Ownership	The LCHO (Low Cost Home Ownership) report will document the formulation, implementation and the publication of a new policy which governs the process by which the Council will sell homes to people living and/or working in the borough wanting to access homeownership but cannot afford to do so without some form of public subsidy.	Roberts-Waite, Jane;	Cllr. Phipps, Lisa;
---------------------	-------------------------	---	----------------------	---------------------

This page is intentionally left blank



CABINET – 13TH OCTOBER 2021

SUBJECT: CAR PARKING AT THE TWYN, CAERPHILLY AND REAR OF HIGH STREET, BLACKWOOD

REPORT BY: CORPORATE DIRECTOR OF ECONOMY AND ENVIRONMENT

1. PURPOSE OF REPORT

- 1.1 To provide Cabinet with an update in relation to the use of car parks at the Twyn, Caerphilly and rear of High Street, Blackwood and to outline the process required to implement any changes to the ticketing/charging arrangements in place at these locations.

2. SUMMARY

- 2.1 During the period June 2020 – September 2021, Cabinet has considered a number of reports relating to car parks and the provision of free parking to aid the covid economic recovery in our town centres.

- 2.2 The latest report was considered by Cabinet on 1st September 2021. At this meeting it was resolved that for the reasons contained in the report:

- The extension of the period of free car parking in town centres for a further 12 months until 30th September 2022 be agreed.
- The projected income shortfall of £660k be funded from the previously approved Covid-19 earmarked reserve.
- The Joint Scrutiny Committee Cross Party Task and Finish Group to undertake a further review of town centre car parking charges in light of the effects of the pandemic on the economy of our town centres.
- Residents' season ticket only use of the three car parks in Blackwood (Gordon Road, Libanus and Highland Terrace) be removed for the duration of the free parking.
- Officers bring back a report that sets out proposals to manage the interface between business and customer parking at the Twyn Car Park, Caerphilly and Blackwood High Street Car Park having considered the 12 month period of this decision.

- 2.3 This report therefore seeks to address the final bullet point and sets out options for managing the interface between business and customer parking at the Twyn, Caerphilly and High Street, Blackwood Car Parks.

3. RECOMMENDATIONS

- 3.1 It is recommended that the temporary free parking agreed on 1st September 2021 prevails and any changes to parking tariffs or ticketing at the Twyn, Caerphilly and High Street, Blackwood are considered as part of the cross-party Scrutiny task and finish work on the future of car parking charges.

4. REASONS FOR THE RECOMMENDATIONS

- 4.1 To support the Authority's local town centre economy in the current, challenging economic climate and to support local residents in "staying local" for shopping.

5. THE REPORT

- 5.1 During the Cabinet meeting held on the 1st September 2021, representations were made by one of the St. Martins (Caerphilly) members relating to disbursement of cars within the Twyn car park, use of the parking bays by employees within the town, resultant lack of availability for shoppers and the consequential impact on town centre regeneration.

- 5.2 A similar situation is currently being experienced in the car park at rear of High Street, Blackwood where many spaces are filled on a daily basis by employees denying opportunities for customer parking and shoppers "churn" which assists with town centre economic recovery.

- 5.3 It should however be noted that this issue is less prominent in the Blackwood High Street car park as it is considerably larger than the car park at the Twyn, Caerphilly although a number of complaints have been received concerning both locations.

- 5.4 In terms of differentiating between employees using the car parks all day and shoppers needing short-stay spaces, there are limited options that can be implemented.

- 5.5 There are 3 options set-out below and each has varying advantages and disadvantages as follows:-

- 5.6 **Option 1 – Status Quo (free car parking until 30th September 2022) remains at the Twyn, Caerphilly & Blackwood, High Street**

5.6.1 Advantages

- Already implemented
- Generally assists with town centre recovery from the economic impacts of Covid.
- Provides town centre employees with free parking all-day.
- Allows the matter to be reviewed by the cross party Scrutiny task and finish group review of car parking charges agreed by Cabinet on 1st September 2021.
- All car parks treated equitably.

5.6.2 Disadvantages

- Continued loss of car parking income of circa £55k per month.
- Does not stimulate “churn” in short-term town centre visitor parking.
- Does not address “conflict” between short-term and long-term parking as there is no mechanism in place to control long-term parking issues.
- Complaints likely to continue.

5.7 **Option 2 – Re-introduction of Charges at The Twyn, Caerphilly &/or Blackwood, High Street**

5.7.1 Advantages

- Reduces loss of income.
- Could be implemented without any traffic regulation order amendment.
- Increases “churn” and avoids valuable shopper spaces being taken by employees parking all day.
- Should avoid future complaints regarding loss of short-term spaces to longer-term users.
- Free parking would still be available in other CCBC car parks in Caerphilly and Blackwood.

5.7.2 Disadvantages

- Potentially at odds with assisting town centre businesses to recover from the economic impact of Covid.
- Would result in the Twyn and Blackwood High Street being treated differently to other CCBC car parks.

5.8 **Option 3 – Introduce a Fixed 2 hour Free Parking Limit at the Twyn, Caerphilly & High Street, Blackwood with Charges Applying Thereafter**

5.8.1 Advantages

- Increases “churn” and avoids future complaints regarding loss of short-term spaces to longer-term users.
- Some income would be recovered.
- Should avoid further complaints regarding loss of short-term spaces to long-term users.
- Free parking would still be available in other CCBC car parks in Caerphilly and Blackwood.

5.8.2 Disadvantages

- Implementation would require an amendment to the current traffic regulation order (TRO) which will take circa 6 months as a result of the legal/consultation process.
- Amendments to the TRO would need resourcing and could be at the expense of other TRO work across the Highway network.
- Potentially at odds with assisting town centre businesses to recover from the economic impact of covid.
- Would result in the Twyn, Caerphilly and High Street, Blackwood being treated

differently to other CCBC car parks.

5.9 Conclusion

- 5.9.1 As can be seen from this report, there are a number of advantages and disadvantages attached to tackling the use of short-term v -long-term car parking spaces at the Twyn, Caerphilly and High Street, Blackwood. The options available for immediate implementation are limited to the status quo (free parking) or re-instatement of the charging regime already set-out in the Council's Traffic Regulation Order (TRO).
- 5.9.2 Deviating from either of these options will require TRO amendment which is a lengthy (6 month) and resource intensive process. Additionally, given the timescale involved it could potentially be at odds with any preferred options arising from the cross party, Scrutiny task and finish group which will be in-train by the time any TRO process concludes.
- 5.9.3 Consequently, the recommendation of officers is that the status quo (free parking) prevails at the Twyn and Blackwood High Street in accordance with the Cabinet decision taken on 1st September 2021 and that the matter is then subject to further consideration by the Scrutiny task and finish group

6. ASSUMPTIONS

- 6.1 The report has assumed that the challenging economic climate for businesses and residents may last beyond September 2021 but this will need to be kept under review.

7. SUMMARY OF INTEGRATED IMPACT ASSESMENT

- 7.1 The report links to a number of corporate well-being objectives, namely.
- Objective 2 – Enabling employment.
 - Objective 4 – Promote a modern integrated and sustainable transport system that increases opportunity, promotes prosperity and minimises the adverse impacts on the environment.
 - Objective 5 – Creating a County Borough that supports a healthy lifestyle in accordance with the sustainable development principle within the Wellbeing of Future Generations (Wales) Act 2015.
 - Objective 5 – Support citizens to remain independent and improve their well-being.
- 7.2 Economic Recovery contributes to the Well-being objectives as set out above. It is consistent with the five ways of working as defined within the sustainable development principle in the Act and it is aimed at improving the economic, environmental, social and cultural well-being and recovery of the area.
- 7.3 As such it aligns with the following well-being goals:
- A Prosperous Wales – Providing more jobs and housing in the area will create

- more wealth for the local population.
- A Resilient Wales – Providing additional and more diverse employment will make the area more resilient to external economic factors.
- A Wales of Cohesive Communities – providing local employment and more diverse will help to stabilise and develop local communities and prevent outmigration.

7.4 The report's recommendations are consistent with the five ways of working as defined within the sustainable development principle in the Act. The five ways of working of the sustainable development principle, listed in the Act are:

- Long Term – The importance of balancing short-term needs with the need to safeguard the ability of future generations to meet their long-term needs;
- Prevention - How acting to prevent problems getting worse, may help public bodies meet their objectives;
- Integration – Considering how the public body's well-being objectives may impact upon each of the well-being goals, on their other objectives, or on the objectives of other public bodies;
- Collaboration – Acting in collaboration with any other person (or different parts of the body itself) that could help the body to meet its well-being objectives;
- Involvement – The importance of involving people with an interest in achieving the well-being goals, and ensuring that those people reflect the diversity of the area which the body serves.

7.5 No Integrated Impact Assessment has been completed. On 17th June 2020 the Chief Executive, in consultation with the Leader, Cabinet Members and Acting Section 151 Officer took a delegated powers decision to temporarily suspend car parking charges until 31st December 2020 as part of the Covid economic recovery plan. On 9th December 2020 Cabinet took a further decision to extend the suspension of car parking charges until 31st March 2021 (links to the reports are as follows). On 24th March 2021 and 1st September 2021 Cabinet reviewed the position again and took further decisions to continue the suspension of car parking charges until 30th September 2022.

[Link to Cabinet report 9th December 2020](#)

[Link to Cabinet report 24th March 2021](#)

[Link to Cabinet report 1st September 2021](#)

8. FINANCIAL IMPLICATIONS

8.1 The recently approved extension of free parking in town centres for the period 1st October 2021 to 30th September 2022 results in an estimated loss of income of circa £660k, which will be funded from the Covid-19 Earmarked Reserve.

8.2 There will be no further immediate financial implications arising from the recommendation of officers that any changes to parking tariffs or ticketing at the Twyn, Caerphilly and High Street, Blackwood are considered as part of the cross-party Scrutiny task and finish work on the future of car parking charges.

9. PERSONNEL IMPLICATIONS

9.1 There are no personnel implications associated with this report.

10. CONSULTATIONS

10.1 An offer of a meeting was made to the Blackwood and St martins ward members and 2 of the Blackwood members responded positively to this request and a meeting was held to discuss the report.

10.2 One comment on the report was received from a St Martins ward member who favoured the introduction of 2 hours free parking. However, as stated in option 3, above this would require a TRO process to be implemented.

10.3 The report reflects any views expressed by the other listed consultees.

11. STATUTORY POWER

11.1 Local Welsh Government Act 2000. This is a Cabinet function.

Author: Mark S Williams, Corporate Director for Economy and Environment

Consultees: Councillor James Pritchard, Deputy Leader & Cabinet Member for Infrastructure and Property
Councillor Eluned Stenner, Cabinet Member for Performance, Economy & Enterprise
Robert Tranter, Head of Legal Services and Monitoring Officer
Stephen Harris, Head of Financial Services & S151 Officer
Marcus Lloyd, Head of Infrastructure
Clive Campbell, Transportation Engineering Manager
Dean Smith, Principle Engineer, Traffic Management
Rhian Kyte, Head of Regeneration and Planning
Councillor Tudor Davies, Chair of Environment & Sustainability Scrutiny
Councillor Adrian Hussey, Vice Chair of Environment & Sustainability Scrutiny
Councillor John Ridgewell, Chair of Housing & Regeneration Scrutiny
Councillor Mike Adams, Vice Chair of Housing & Regeneration Scrutiny
Councillor Kevin Etheridge, County Councillor (Blackwood Ward)
Councillor Andrew Farina-Childs, County Councillor (Blackwood Ward)
Councillor Nigel Dix, County Councillor (Blackwood Ward)
Councillor Colin Elsbury, County Councillor (St Martins Ward)
Councillor James Fussell, County Councillor (St Martins Ward)
Councillor Stephen Kent, County Councillor (St Martins Ward)

Background Papers:

Council 6th October 2020 – Report on “Decisions taken by the Chief Executive During the Pandemic”.

Cabinet 9th December 2020 – Car Parking Charges

Cabinet 24th March 2021 – Car Parking Charges

Cabinet 1st September 2021 – Car Parking Charges



CABINET - 13TH OCTOBER 2021

SUBJECT: 21ST CENTURY SCHOOLS AND COLLEGES BAND B
PROGRAMME - UPDATE ON PHASE 2

REPORT BY: CORPORATE DIRECTOR FOR EDUCATION AND CORPORATE
SERVICES

1. PURPOSE OF REPORT

- 1.1 The purpose of the report is to update Members on the 21st Century Schools and Colleges Band B Phase 2 programme and to seek Members' approval to proceed to consultation in respect of the phase 2 projects which includes the amalgamation of Llancaeath Junior and Llanfabon Infants School, a new replacement Plasyfelin Primary School and the establishment of a new Centre for Vulnerable Learners (Pupil Referral Unit).
- 1.2 Members are also asked to approve that £4.716m is set aside from the Authority's Place-Shaping Reserve in respect of the Authority's financial contribution to Phase 2 of the 21st Century Schools and Colleges Band B programme.

2. SUMMARY

- 2.1 The report provides an update to Members on the current position of Phase 2 of the Band B 21st Century School and Colleges Capital Programme.
- 2.2 The schemes identified for Phase 2 of the Band B programme are:
 - The amalgamation of Llancaeath Junior School and Llanfabon Infants School to create a new Primary School provision
 - A new replacement Plasyfelin Primary School on the existing site
 - The establishment of a Centre for Vulnerable Pupils (Pupil Referral Unit) on the former Pontllanfraith Comprehensive site
- 2.3 Members approval is being sought in relation to progression to consultation stage on the Phase 2 proposals and to set aside funding from the Authority's Place-Shaping Reserve.
- 2.4 Officers will ensure that Members are updated on a regular basis in relation to all aspects of the proposals e.g. financial, business case, ministerial approval, consultation process etc.

3. RECOMMENDATIONS

3.1 Cabinet Members are asked to: -

- a) Note the contents in this report
- b) Give approval to proceed to consultation on the proposal for the amalgamation of Llancaeath Junior School and Llanfabon Infants School in line with the requirements of the Welsh Government's School Organisation Code 2018
- c) Approve the consultation process outlined in 5.4.3 and 5.5.4 in respect of Plas-y-felin Primary School and the Centre for Vulnerable Learners that are not subject to the Statutory requirements of the Welsh Government School Organisation Code 2018
- d) Give approval that £4.716m is set aside from the Authority's Place-Shaping Reserve in respect of the Authority's financial contribution to Phase 2 of the 21st Century Schools and Colleges Band B programme.

4. REASONS FOR THE RECOMMENDATIONS

- 4.1 To ensure Members are updated on the progress of Phase 2 of the 21st Century Schools and Colleges Capital Band B programme
- 4.2 To seek Members approval to proceed to consultation stage and assist the Council in discharging its duties in line with the requirements of the Welsh Government's School Organisation Code 2018 where this statutory legislation applies.
- 4.3 To ensure that funding is earmarked in relation to the Authority's financial contribution to the programme.

5. THE REPORT

5.1 Band B

- 5.1.1 The key aims of the 21st Century Schools and Colleges Band B investment programme, outlined by Welsh Government, is to:
 - Reduce the number of poor condition schools.
 - Ensure that we have the right size schools in the right location, providing enough places to deliver Welsh and English medium education.
 - Ensure the effective and efficient use of the educational estate for use by both Schools and the wider Community.

5.2 Band B Phase 2

- 5.2.1 The schemes identified as part of Phase 2 of the Band B programme include the adaption and refurbishment of the old grammar school building on the former Pontllanfraith High School site to accommodate a Centre for Vulnerable Learners (Pupil Referral Unit), the amalgamation of Llancaeath Junior and Llanfabon Infants school via the expansion of the existing Llanfabon Infants site to accommodate 275 pupils plus nursery, and a new build replacement Plas-y-felin Primary school in the grounds of the existing school site to accommodate 420 pupils plus nursery.

5.3 Phase 2 - Llancaeath Junior School and Llanfabon Infants School

- 5.3.1 The proposal relates to the amalgamation of Llancaeath Junior School and Llanfabon Infants School via the expansion and refurbishment of the existing Llanfabon Infants site to accommodate the new 3-11 Primary School provision with places for 275 pupils plus nursery.
- 5.3.2 The School Organisation Code 2018 applies to proposals in respect of maintained schools as defined by Section 98 or the School Standards and Organisation (Wales) Act 2013 and provides clear statutory guidance as to the processes that need to be adhered to for this proposal by the Education Directorate when progressing a proposal.
- 5.3.3 The statutory process that must be followed is outlined below subject to Cabinet approval to move to consultation:
- Due to the nature of the scheme a consultation process as per the statutory guidance provided in the School Organisation Code 2018 will be undertaken.
 - A 'Consultation Document' will be published, and consultees as prescribed in the School Organisation Code 2018 will have the opportunities to express their views on the proposal during the consultation period.
 - Children and Young People's views will also be captured to ensure the 'pupil voice' is included as part of the process.
 - A 'Consultation Report' will be produced summarising the views received and presented to Education Scrutiny Committee to endorse the recommendations and then to Cabinet for approval to progress to Statutory Notice.
 - A 'Statutory Notice' will be published for a 28 day period where formal written objections may be submitted by prescribed consultees as outlined in the School Organisation Code 2018
 - An 'Objection Report' will be presented to Scrutiny summarising the concerns and Members will be asked to endorse the recommendations to Cabinet to proceed to Full Business Case
 - Property Services to undertake full planning application process including formal consultation as per planning guidance
 - Full Business Case submission to Welsh Government for final review and approval at Welsh Government's Business Case Scrutiny Group and Programme Investment Panel

5.4 Phase 2 - Plasyfelin Primary School

- 5.4.1 The proposal relates to a new and enlarged replacement school for Plasyfelin Primary School to be situated within the current grounds of the existing school site to include increased accommodation for up to 420 pupils plus nursery provision and also additional multi-use sporting and facilities available for use by the school and the wider community. This proposal will ensure future projected demand can be met within the area and to update a facility to provide a fit for purpose 21st Century facility.
- 5.4.2 The proposal for Plasyfelin Primary School is exempt from the consultation processes outlined in line School Organisation Code 2018 and the School Standards and Organisation (Wales) Act 2013. Plasyfelin Primary School is classified as a community school under the code, however the requirement to consult under the code does not apply to proposals where a main entrance of the school on its new site

would be under 1 mile from the current site and the enlargement is less than 25% of the current capacity, both of which apply in this case.

5.4.3 The proposed process to be followed is outlined below subject to Cabinet approval:

- Due to the nature of the scheme, there is no need to undertake a formal period of consultation as per the statutory guidance provided in the School Organisation Code 2018. However, engagement with the school as well as the wider community will be undertaken throughout the process in line with the Authority's Consultation and Engagement framework.
- Property Services to undertake full planning application process including formal consultation as per planning guidance
- Full Business Case submission to Welsh Government for final review and approval at Welsh Government's Business Case Scrutiny Group and Programme Investment Panel

5.5 Phase 2 - Centre for Vulnerable Learners

5.5.1 The proposal is to adapt and refurbish the old grammar school building on the former Pontllanfraith High School site and develop bespoke sporting provision and facilities for pupils which will also be available for the wider community outside of school hours.

5.5.2 For the purposes of reporting to Welsh Government, the Centre for Vulnerable Learners will be referred to in all correspondence to Welsh Government and supporting documentation as a Pupil Referral Unit.

5.5.3 Pupil Referral Units are exempt from the consultation processes outlined in line School Organisation Code 2018 and the School Standards and Organisation (Wales) Act 2013.

5.5.4 The proposed process to be followed is outlined below subject to Cabinet approval

- Due to the nature of the scheme, there is no need to undertake a formal period of consultation as the statutory guidance provided in the School Organisation Code 2018 does not apply in this instance. However, engagement with relevant agencies as well as the wider community will be undertaken throughout the process in line with the Authority's Consultation and Engagement framework.
- Property Services to undertake full planning application process including formal consultation as per planning guidance
- Full Business Case submission to Welsh Government for final review and approval at Welsh Government's Business Case Scrutiny Group and Programme Investment Panel

5.6 Current Phase 2 Position

5.6.1 Phase 2 of the 21st Century Schools Band B programme was agreed by Cabinet at their meeting on the 7th April 2021.

- 5.6.2 Outline Business Cases were submitted to Welsh Government for each respective proposal outlined above and reviewed by Welsh Government through a Business Case Scrutiny Group and Programme Investment Panel.
- 5.6.3 Welsh Government and Minister for Education have approved the Outline Business Case for the above Phase 2 projects
- 5.6.4 In order to progress to Full Business Case, consultation exercises are required. This consultation is scheduled to commence October 2021 subject to Cabinet approval.
- 5.6.5 The School Standards and Organisation (Wales) Act 2013 requires that the Welsh Ministers issue a School Organisation Code. The Code imposes requirements in accordance with which relevant bodies including local authorities must act when bringing forward proposals in respect of maintained schools as defined at Section 98 of the 2013 Act. That is a school in Wales, which is a community, foundation or voluntary school, a community special school or a maintained nursery school.
- 5.6.6 The consultation process will proceed in line with the requirements of Welsh Government Statutory Code document no 011/2018 - School Organisation Code 2nd Edition 2018 where exemptions do not apply
- 5.6.7 The proposals for the Centre for Vulnerable Learners (Pupil Referral Unit) and Plasyfelin Primary School are exempt from the requirements to consult under the School Organisation Code 2018. However, for the purposes of progressing this proposal and to enable transparent, balanced and open decision making, utilising the "Spectrum of Engagement" approach, an appropriate level of engagement in informing and consulting stakeholders will be undertaken, mirroring the equivalent processes outlined in Section 3 of the School Organisation Code 2018 only.
- 5.6.8 A prescribed list of recipients as outlined in the code will be written to. A consultation document will be published in both hardcopy and electronically via the Authority's website based on the preferred option as evidenced from the options appraisal for each project. Reasonable access to information will be promoted from an Equalities perspective and other formats will be made available on request.
- 5.6.9 The consultation period will be for 42 days (with at least 20 of these being school days) to provide adequate time for consideration and response and conscientious consideration will be given to any responses received.
- 5.6.10 The principles of engagement outlined in the Local Authority's Consultation and Engagement Framework 2020 will also be acknowledged and the project team will engage with any additional 'interested parties' as required.
- 5.6.11 Following the consultation period, a consultation/briefing report along with any responses received will be collated and reported back to Members for full consideration prior to proceeding to Full Business Case.
- 5.6.12 Pursuant to Section 3.3 of the School Organisation Code 2018, there is no requirement to hold face-to-face consultation meetings. Furthermore, in line with the COVID-19 guidance provided by Welsh Government to reduce social interaction between people in order to reduce the transmission of coronavirus, the 21st Century Schools team will engage consultees through appropriate channels to ensure the

dissemination of information and provision of a suitable platform for the consultees to make their views known is made available.

5.7 Conclusion

Members are asked to note the information provided for each proposal in sections 5.3, 5.4 and 5.5 and give approval to proceed to consultation stage following the process for each respective proposal as outlined above.

6. ASSUMPTIONS

6.1 No assumptions have been made in relation to this report.

7. SUMMARY OF INTEGRATED IMPACT ASSESSMENT

7.1 A full Integrated Impact Assessment (IIA) has been completed in relation to each proposal to ensure compliance with the socio-economic duty, Sections 1 to 3 of Equality Act 2010 that came into force on the 1st April 2021.

[IIA – Centre for Vulnerable Learners](#)

[IIA – Llancaeath Junior- Llanfabon Infants School](#)

[IIA – Plasyfelin Primary School](#)

8. FINANCIAL IMPLICATIONS

8.1 Phase 2 of the 21st Century Schools and Colleges Band B programme, currently totals £18,500,000. The Authority's contribution within this sum is £5,925,000 as detailed below.

Project Name:	LA Contribution	WG contribution	Total Funding
Centre for Vulnerable Learners	£1,375,000 (25%)	£4,125,000	£5,500,000
Llancaeath/Llanfabon	£1,400,000 (35%)	£2,600,000	£4,000,000
Plasyfelin Primary	£3,150,000 (35%)	£5,850,000	£9,000,000

8.2 The Authority's contribution will be met from the remaining funding of £1.209m already earmarked for 21st Century Schools and through the proposed earmarking of a further sum of £4.716m from the Authority's Place-Shaping Reserve.

8.3 The Welsh Government Grant allocation for individual projects within the 21st Century Schools Band B programme is calculated consistently across Wales using the Building Bulletin regulations BB98 - Secondary, BB99 – Primary and BB104 – Special/Pupil Referral Units. There are a number different elements which have been included in the calculations provided for each of the Phase 2 proposals, which include:

- Proposed standard price per square metre

- Furniture fitting and equipment per pupil
- ICT per pupil

8.4 Largely due to a combination of the impact of Covid-19 and Brexit there are currently significant inflationary increases within the construction sector. This is being kept under close review but the current projected costs for the 21st Century Schools Programme will be subject to change. Members will be updated further as matters progress.

9. PERSONNEL IMPLICATIONS

9.1 This will be dependent on specific proposals and will be considered as part of the consultation process.

10. CONSULTATIONS

10.1 The draft report was distributed as detailed below. All comments received have been reflected in this version of the report.

10.2 SCRUTINY COMMITTEE COMMENTS

Education Scrutiny Committee 21st September 2021 Comments Agenda Item 8 – 21st Century Schools and Colleges Band B Programme - Update on Phase 2.

Members received an overview on the progression of the Band B Phase 2 proposals from the 21st Century Schools Manager which include the proposal to amalgamate Llancaeach Junior School and Llanfabon Infants School, a new replacement Plasfelin Primary School and the creation of a Centre for Vulnerable Learners in Pontllanfraith. The Outline Business Cases submitted to Welsh Government have gained Ministerial Approval and it was explained that endorsement is now being sought on the recommendation to proceed all 3 schemes concurrently to consultation, in addition to the funding outlined in the report. It was also explained that only 1 of the 3 proposals was subject to the requirements to consult under the Welsh Government's School Organisation Code 2018, however, to enable open and transparent decision making, the same consultation process will be carried out for all 3 proposals, with a view to undertaking the consultation period towards the end of October, subject to Cabinet approval.

Members sought information on future 21st Century Schools proposals in relation to plans for Welsh Medium Schools. Officers reminded Members that Phase 1 of the Band B proposals included Ysgol Gyfun Cwm Gwyddon, which had been agreed by Scrutiny and Cabinet previously and was currently progressing through the planning application process. Subject to planning approval a full business case would be submitted to Welsh Government, with an anticipated completion date and site occupation by September 2023.

The Officer highlighted that the Band B Programme was being progressed in 'bite-sized' chunks, and that future phases would consider both Welsh and English Medium provision within the agreed funding envelope.

Members sought clarification as to whether the placement of pupils at the Centre for Vulnerable Learners at Pontllanfraith would be a full time provision and would additional staff be employed. Members were advised that the site would look to

accommodate between 80 - 120 pupils and that additional staff would need to be employed as this is an expansion to the current provision for learners requiring this type of provision within the Authority. It is envisaged that places will be based on the individual needs of pupils. It is anticipated that the majority of pupils would attend on a full time basis, however, the aim will be to provide support to enable pupils to reintegrate back into mainstream schools.

Members were also advised that the aspiration for the facilities on the CVL site should be seen as a 'Centre of Excellence' and will be available for community use outside of school hours as this is a pre-requisite embedded into all Band B schemes.

Following consideration and discussion the Education Scrutiny Committee by those present, and in noting in that there were eight votes for, no abstentions and none against, ENDORSED the recommendation unanimously for the 21st Century Schools Band B Programme – Phase 2 proposals to progress to consultation and that £4.716m is set aside from the Authority's Place-Shaping Reserve in respect of the Authority's financial contribution to Phase 2 of the 21st Century Schools and Colleges Band B programme.

11. STATUTORY POWER

11.1 School Organisation Code 2018 (Welsh Government) School Standards & Organisation (Wales) Act 2013

Author: Andrea West, 21st Century Schools Manager

Consultees: Christina Harray, Chief Executive
Richard Edmunds, Corporate Director of Education and Corporate Services
Dave Street, Corporate Director, Social Services
Mark S Williams, Corporate Director for Economy and Environment
Councillor Ross Whiting, Cabinet Member, Education and Achievement
Councillor Teresa Parry, Chair of Education Scrutiny Committee
Councillor Carol Andrews, Vice Chair of Education Scrutiny Committee
Steve Harris, Head of Financial Services and S151 Officer
Keri Cole, Chief Education Officer
Sue Richards, Head of Education Planning and Strategy / Head of Transformation
Sarah Ellis, Lead for Inclusion & ALN
Sarah Mutch, Early Years Manager
Paul Warren, Strategic Lead for School Improvement
Jane Southcombe, Financial Services Manager
Lynne Donovan, Head of People Services
Anwen Cullinane, Senior Policy Officer, Equalities, Welsh Language & Consultation)
Rob Tranter, Head of Legal Service and Monitoring Officer
Ros Roberts, Business Improvement Officer
Mark Williams, Interim Head of Property Services
Steve Pugh, Corporate Communications Manager

Background Papers:

None



CABINET– 13TH OCTOBER 2021

SUBJECT: WRITE-OFF DEBTS OVER £20,000 – BUSINESS RATE ARREARS FOR LIMITED COMPANIES

REPORT BY: CORPORATE DIRECTOR FOR EDUCATION AND CORPORATE SERVICES

1. PURPOSE OF REPORT

- 1.1 On 15th September 2009, Cabinet approved a revised write-off procedure for debts that are material, where the individual debt is greater than £20,000. Approval is sought to write-off the business rate debts for two limited companies where, in each case, the aggregated values per business are greater than £20,000.

2. SUMMARY

- 2.1 This report gives details of amounts of business rate that the Authority is required to write off as bad debt on the grounds that they are irrecoverable as no further legal remedy exists.
- 2.2 The report includes any actions taken by the Authority to recover the amounts due.

3. RECOMMENDATIONS

- 3.1 Cabinet is asked to determine the business rate debts detailed in paras 5.2.1 to 5.3.9 inclusive be written-off on the grounds that they are irrecoverable.

4. REASONS FOR THE RECOMMENDATIONS

- 4.1 To obtain approval of Cabinet Members to write-off bad debts due to the Authority where no further legal remedy exists.

5. THE REPORT

5.1 Overview

- 5.1.1 Policy & Resources Scrutiny Committee receives half yearly reports on monies due to the Council which cannot be collected; the reports summarise the value of debts

written off by the Authority. Unpaid business rate is pursued through a magistrates' court liability order that empowers the Authority to instruct enforcement agents.

- 5.1.2 Due to debtors absconding, declaring themselves insolvent through bankruptcy/liquidation or other proceedings, ceasing to trade, dying with no estate, and because of limited means there are inevitably circumstances when debts cannot be collected. After all legal means have been exhausted a decision is made to write-off debts. It should be noted that business rate is an unsecured debt in the event of bankruptcy/liquidation.
- 5.1.3 Members are reminded that the Authority collects business rates on behalf of the Welsh Government which then redistributes the total amount collected by all 22 local authorities in Wales (known as the rating pool) along with the Revenue Support Grant. When a business rate debt is written off as irrecoverable, the impact of that revenue loss is borne by the rating pool, not directly by this Authority.
- 5.1.4 Members should bear in mind that for at least 14 months the Business Rate Team suspended the majority of its normal processes in order to administer numerous WG business rate related COVID-19 support grant schemes. The impact of the COVID-19 pandemic has caused delays in preparing cases to be considered for write-off by Cabinet.

5.2 **Personal Leisure Limited**

- 5.2.1 The first case involves Personal Leisure Limited, a company that occupied The Maes Manor Hotel, Blackwood. The unpaid rates of £31,637.52 are in respect of an occupied rate liability (reference no. 510337918) covering the period 13th April 2015 to 16th November 2015 inclusive. In June 2015 the Authority was advised by the owners of the property, Warner Hotels Ltd, that the company Personal Leisure was in occupation and a lease was supplied as evidence.
- 5.2.2 The Authority issued a rate demand in June 2015 and, as no payments were received from the company, subsequently obtained a liability order on the 13th November 2015 in respect of the debt. An enforcement agent was immediately instructed to recover the debt but no monies were collected. Following a statutory compliance letter being issued by the enforcement agent, the owners informed the Authority that they had re-entered the property due to non-payment of rent from their tenant and were themselves in occupation from the 17th November 2015.
- 5.2.3 As Personal Leisure Limited had ceased trading, the enforcement agent was unable to collect the debt and returned the case to the Authority. Personal Leisure Limited was subsequently dissolved on the 27th September 2016 according to Companies House records which leaves the Authority with no legal remedy to collect the debt.
- 5.2.4 In the unlikely event that any future payment is received in respect of these arrears, an equivalent amount of the debt will be reinstated.

5.3 **Grabal Alok (UK) Ltd t/a Store Twenty One**

- 5.3.1 The second case involves a company, Grabal Alok (UK) Ltd t/a Store Twenty One, who occupied 2 shops in the Caerphilly and Blackwood area. The company entered in to compulsory liquidation on the 10th July 2017, following the failure of a Company Voluntary Arrangement (CVA), according to Companies House records. As the business rate is an unsecured debt it is very unlikely that the Authority will receive any further payment following the liquidation of the company. In the unlikely event

that any future payment is received in respect of the arrears detailed in points 5.3.2 and 5.3.6, an equivalent amount of the debt will be reinstated.

- 5.3.2 The first account concerns unpaid rates of £40,618.27 for the property at Unit 16 Castle Court, Caerphilly which are in respect of an occupied rate liability covering the period 1st April 2016 to 6th January 2017 inclusive (reference no. 510235046).
- 5.3.3 The company had traded from this property since 2nd April 2006 and the Authority has collected the rates due up to the 1st April 2016 of £463,629.44 in full.
- 5.3.4 The Authority issued the annual rate demand in respect of 2016/17 and subsequently, as no payments were received, a liability order in respect of the debt was obtained on the 15th July 2016. On the 21st July 2016, an Insolvency Practitioner advised all known creditors that the company had entered in to a Company Voluntary Arrangement (CVA) and a proof of debt form for the unpaid business rate was submitted.
- 5.3.5 A CVA prevents any further enforcement action being undertaken by a creditor unless the debtor fails to maintain payment in accordance with the agreed payment terms of the CVA. Under the terms of the CVA, the company continued to trade from the property and further payments totalling £1,356.91 were received. The company ceased trading at the property on the 6th January 2017 and, following the failure of the CVA, the company was placed into compulsory liquidation on the 10th July 2017. This leaves the Authority with no legal remedy to collect the debt.
- 5.3.6 The second account concerns unpaid rates of £13,391.72 for the property 87-89 High Street, Blackwood which are in respect of an occupied rate liability covering the period 1st April 2016 to 23rd August 2016 inclusive (reference no. 510235064).
- 5.3.7 The company had traded from this property since 2nd April 2006 and the Authority has collected the rates due up to the 1st April 2016 of £281,216.23 in full.
- 5.3.8 The Authority issued the annual rate demand in respect of 2016/17 and subsequently, as no payments were received, a liability order in respect of the debt was obtained on the 15th July 2016. On the 21st July 2016 an Insolvency Practitioner advised all known creditors that the company had entered in to a CVA and a proof of debt form for the unpaid business rate was submitted.
- 5.3.9 As explained in point 5.3.5, a CVA prevents any further enforcement action being undertaken by a creditor unless the debtor fails to maintain payment in accordance with the agreed payment terms of the CVA. The company ceased trading at the property on the 23rd August 2016 and, following the failure of the CVA, it was placed into compulsory liquidation on the 10th July 2017. This leaves the Authority with no legal remedy to collect the debt.

5.4 **Conclusion**

This report details amounts of business rate that the Authority is required to write off as bad debt on the grounds that they are irrecoverable as no further legal remedy exists. With no further legal powers available to the Authority to recover the unpaid debts, Cabinet is asked to approve the recommendations for write-off.

6. ASSUMPTIONS

6.1 There are no assumptions within this report.

7. SUMMARY OF INTEGRATED IMPACT ASSESSMENT

7.1 No Integrated Impact Assessment has been produced because this report does not involve a strategic decision on a strategic proposal/project. The information provided is a statement of fact to enable Cabinet to approve the recommendations for write-off.

8. FINANCIAL IMPLICATIONS

8.1 There are no direct financial implications to the Authority as the Authority collects NNDR on behalf of Welsh Government.

9. PERSONNEL IMPLICATIONS

9.1 There are none in respect of this report.

10. CONSULTATIONS

10.1 There are no consultation responses to be reflected in respect of this report.

11. STATUTORY POWER

11.1 Local Government Finance Act 1988, Government of Wales Act 2006 and Local Government Act 1972, 2000 and 2003.

Author: John Carpenter, Finance Manager (Revenues)
(Email: carpewj@caerphilly.gov.uk)

Consultees: Christina Harray, Chief Executive
(Email: harrhc@caerphilly.gov.uk)

Richard Edmunds, Corporate Director for Education & Corporate Services
(Email: edmunre@caerphilly.gov.uk)

Robert Tranter, Head of Legal Services & Monitoring Officer
(Email: trantrj@caerphilly.gov.uk)

Stephen Harris, Head of Financial Services and S151 Officer,
(Email: harrisr@caerphilly.gov.uk)

Anwen Cullinane, Senior Policy Officer (Equalities, Welsh Language and Consultation)
(Email: cullima@caerphilly.gov.uk)

Cllr Eluned Stenner, Cabinet Member for Performance, Economy and

Enterprise
(Email: stenne@caerphilly.gov.uk)

Cllr Gez Kirby, Chair, Policy and Resources Scrutiny Committee
(Email: gezkirby@caerphilly.gov.uk)

Cllr Brenda Miles, Vice Chair, Policy and Resources Scrutiny Committee
(Email: brendamiles@caerphilly.gov.uk)

Background Papers: None

This page is intentionally left blank



CABINET - 13TH OCTOBER 2021

SUBJECT: PROPOSAL TO DEVELOP TWO NEW RESPITE FACILITIES

REPORT BY: CORPORATE DIRECTOR SOCIAL SERVICES AND HOUSING

1. PURPOSE OF REPORT

1.1 This report seeks Cabinet approval for the proposal to develop two new purpose-built respite facilities in Pontllanfraith, one for adults and one for children.

2. SUMMARY

2.1 At present respite accommodation is provided in 3 separate houses:

- Ty Gwilym, Caerphilly (Adults) 4 beds
- Montclair, Blackwood (Adults) 5 beds
- Ty Hapus, Blackwood (Children) 4 beds

2.2 These 3 respite buildings are becoming unfit for purpose to meet the increasing needs of the children and adults that attend. There are a significant number of children and adults who have autism and associated behaviours who need much more space than the present buildings and gardens offer. Monies have been spent on the refurbishment of the buildings in previous years, however needs cannot continue to be met long-term in the present buildings even with further refurbishments.

2.3 The former Pontllanfraith Comprehensive School site has become available and would be ideal to co-locate this service in 2 separate houses. The proposed new site is central to the county borough.

2.4 The services are all registered with CIW and although they can be co located, there cannot be one facility as children and adult services require separate management and staff support.

2.5 Approximately 100 individuals access respite at Ty Gwilym and Montclair and 30 children access Ty Hapus, to enable support to be provided to their families/unpaid carers.

2.6 Cabinet has made the decision previously to allocate £4.3million of funding for the development. However, due to an element of this funding being subsequently

redirected to the Trinity Fields expansion, increases in construction costs since the original decision, and the cost of equipping the new facilities, a further £1million of Social Services reserves will need to be earmarked for the proposed Respite facilities development.

3. RECOMMENDATIONS

- 3.1 Cabinet Members are asked to: -
 - 3.1.1 Consider and agree the proposal to develop two new respite facilities, one for adult and one for children co-located in Pontllanfraith.
 - 3.2.1 Endorse a recommendation to Cabinet that a further £1,001,436 be allocated to the project from Social Services reserves.

4. REASONS FOR THE RECOMMENDATIONS

- 4.1 Provision of short stays/overnight respite is an essential service to support families and unpaid carers to continue with their caring role.
- 4.2 The current respite facilities are no longer suitable to meet the needs of individuals and cannot be adapted any further.

5. THE REPORT

- 5.1 Caerphilly CBC has successfully provided residential respite for adults since 1996 and prior to this the service was provided by Mid Glamorgan and Gwent County Councils.
- 5.2 Respite for Children was provided by Action for Children until 2016, at which point the service was brought in-house and managed by Children's Services, at that time it provided weekend respite only. In 2018 Ty Hapus transferred to Adult Services and subsequently service was increased to 6 nights a week. Additional Welsh Government grant funding is being sought in 2021/22 to increase service to 7 nights per week at Ty Hapus.
- 5.3 Feedback from families is very positive, the service is used very well with occupancy rates in Adult Services being 92%. It supports families to continue to live together within the community.
- 5.4 However, despite refurbishments through the years the buildings are becoming increasingly unfit for purpose and the Covid-19 pandemic has demonstrated this further. The buildings not being Covid-19 compliant necessitated the reduction of individuals who can be supported at any one time safely.
- 5.5 The previous Pontllanfraith Comprehensive School site has become available and would be ideal to co-locate this service in 2 houses whilst still independent of each other. The proximity of the 2 houses will also support transition from children to adult services.
- 5.6 The new adult facility would have 9 beds which corresponds to the current provision, hence no loss of capacity. However, the design would enable more segregation of

areas should it be required.

- 5.7 The new children's property would increase bed capacity from 4 to beds 6 to meet the increased demand that is being experienced and is predicted to be required longer-term.
- 5.8 The properties would benefit from a specific increase in designated outdoor space which is essential moving forward to meet the needs of individuals with autism .There will be designated safe play areas for children and garden areas to be enjoyed by all.
- 5.9 Ongoing discussions are taking place with Building Consultancy and drawings have been produced for the external requirements. Discussions are ongoing regarding specifications for internal layouts learning lessons from the pandemic.
- 5.10 A letter was sent to Individuals and their families who use this service in February 2021 informing them of this proposal, as it is part of the Council's place shaping strategy. Overall, this news was received positively with several families contacting the managers stating this was good news.
- 5.11 Staff meetings were also arranged in February 2021 and the proposal was received positively by all staff who will transfer to the new buildings.
- 5.12 In respect of the existing properties it is proposed that Montclaire is returned to council housing stock, creating two family homes. In respect of Ty Gwilym usage will be reviewed closer to the time as it may be suitable for emergency extended stay accommodation for children with disabilities. Ty Hapus will be sold which will generate a capital receipt.
- 5.13 **Conclusion**

The development of two purpose-built respite facilities in the centre of the borough is a key element of the Council's place shaping agenda. This provision will provide essential respite services to support parents/families and unpaid carers and meet the increasing needs of individuals.

6. **ASSUMPTIONS**

- 6.1 There are no assumptions made in this report.

7. **SUMMARY OF INTEGRATED IMPACT ASSESSMENT**

- 7.1 The completion of the IIA has not identified any negative impacts. Please see full assessment in the link as follows – [Integrated Impact Assessment](#)

8. FINANCIAL IMPLICATIONS

8.1 The latest financial position is summarised below: -

Current estimated cost of project		£4,635,000
Funding originally earmarked for Children's Centre	£3,100,000	
Less expenditure incurred on Children's Centre	-£31,436	
Less contribution required for Trinity Fields	-£647,000	
Add additional funding approved for Respite Centre	£1,212,000	
Total funding currently available		£3,633,564
Current funding shortfall		£1,001,436

8.2 As of 30th July 2021, the Social Services unallocated service reserve balance stood at just under £2.1million. Therefore, the current funding shortfall for the development can be met by earmarking £1,001,436 of unallocated service reserves.

8.3 The combined revenue budgets of the 3 existing facilities amounting to £1,110,300 would transfer to the 2 proposed facilities:-

Table: Combined Revenue Budgets				
	Ty Gwilym	Montclair	Ty Hapus (6 nights)	Total
Staff Costs	£337,490	£339,118	£356,978	£1,033,586
Premises Costs	£11,506	£8,979	£14,234	£34,719
Food	£6,155	£9,164	£10,872	£26,191
Travelling Expenses	£101	£703	£486	£1,290
Other Costs	£1,551	£8,728	£4,235	£14,514
Total	£356,803	£366,692	£386,805	£1,110,300

9. PERSONNEL IMPLICATIONS

9.1 There are no HR implications associated with this report as staff will transfer to the proposed new facilities.

10. CONSULTATIONS

10.1 All comments have been included in this report.

10.2 This report was presented to Social Services Scrutiny at its meeting on the 13th September 2021. The Scrutiny Committee made the following comments:-

“Member asked how the additional funding was calculated and were advised that it is based upon the best estimate of funding required and is the type of one -off cost that is appropriate use of reserves. The Scrutiny Committee were assured that hopefully this is the first of several reports on these proposed respite centres, if approved by Cabinet. It was suggested by Members that there may be additional costs because of the increasing costs of building materials.”

Author: Sue Wright Service Manager Provider Services
wrightsc@caerphilly.gov.uk

Consultees: Dave Street Corporate Director Social Services & Housing
streetd@caerphilly.gov.uk
Jo Williams Head of Adult Services
willij6@caerphilly.gov.uk
Mike Jones Financial Services Manager
jonesmj@caerphilly.gov.uk
Shaun Watkins HR Service Manager
watkis@caerphilly.gov.uk
Cllr Shayne Cook Cabinet Member Social Care
cooks3@caerphilly.gov.uk
Cllr Donna Cushing Chair of Social Services Scrutiny Committee
cushid@caerphilly.gov.uk
Cllr Carmen Bezzina, Vice-Chair of Social Services Scrutiny Committee
Stephen Harris, Head of Financial Services and S151 Officer
harrisr@caerphilly.gov.uk

This page is intentionally left blank



CABINET - 13th OCTOBER 2021

**SUBJECT: OUTCOME OF THE PUBLIC CONSULTATION ON A
PROPOSED COMMUNITY HALL IN TY SIGN, RISCA**

REPORT BY: CORPORATE DIRECTOR, ECONOMY AND ENVIRONMENT

1. PURPOSE OF REPORT

- 1.1 To inform Cabinet of the outcome of a public consultation exercise relating to a proposal presented by Agape Community Church, Ty Sign (ACCTS) to develop a new Community Hall on land at Holly Road, Tŷ Sign, Risca (shown edged black at Appendix A).
- 1.2 To seek the views of Cabinet on the request to lease land at Holly Road, Ty Sign, Risca for the purposes of building a new community hall.

2. SUMMARY

- 2.1 The Council has been approached by ACCTS to support the development of a new purpose built Community Hall in Holly Road, Tŷ Sign, Risca on land currently held by the Housing Revenue Account. ACCTS have identified a number of funding options to meet the estimated costs of a new building of circa £550,000 and are seeking a lease of 99 years from the Council at a low, non-commercial, rent.
- 2.2 At its meeting of 7th July 2021 Cabinet received a report in relation to the proposal from ACCTS and requested that a consultation with Community Groups and residents be undertaken to get a better understanding of the level of support within the community.
- 2.3 Responses to the public consultation reflected a lot of opposition to the proposal with 91% of those who gave a view disagreeing that the Council should lease the area of land. It is therefore proposed that the request from ACCTS is not progressed.

3. RECOMMENDATIONS

- 3.1 As a result of the outcome of the consultation, and in accordance with the wishes of the community, it is recommended that Cabinet do not support the request from ACCTS and that Officers are authorised to notify ACCTS that the request to lease the land in question is declined.

4. REASONS FOR THE RECOMMENDATIONS

- 4.1 To reflect the views of the community as demonstrated by the public consultation.

5. THE REPORT

- 5.1 At its meeting of 7th July 2021 Cabinet received a report detailing a request by the Agape Community Church, Ty Sign (ACCTS) seeking the Council's support to develop a new purpose built Community Hall in Holly Road, Tŷ Sign, Risca on land held by the Housing Revenue Account (HRA) (on the land shown edged black at Appendix A). ACCTS have assembled funding to meet the estimated project costs of £575,000 including in principle commitments of £90,000 from the Big Lottery 'People and Places Grant' and £250,000 from the Welsh Government Community Facilities Grant.
- 5.2 ACCTS intend that the new facility will be open to the community for use and have identified a number of potential users/uses including after school clubs, Risca Community Comprehensive School, OAP Clubs, training/meeting space for businesses, Job Club, private hire for parties/wedding receptions. Planning permission has been obtained for the proposed development, which consists of:
- A building of 225 sq m, with a main hall of 150 sq m
 - A kitchen, large enough to cater for groups of up to 60 people eating in the main hall.
 - A meeting room
 - Toilets and storage space
 - An entrance lobby
 - Car parking for 15 cars, including two disabled spaces.
- 5.4 The site of the proposed new community hall shown at Appendix A is currently a park known locally as "Spar Field" and is held by the Housing Revenue Account. ACCTS are seeking a lease from the Council of 99 years at a low, non-commercial, rent.
- 5.5 As can be seen at Appendix A, across the road from the site of the proposed new community facility is the St David's Shared Church, Ty Sign. This building is split into three parts, the upper hall, the chapel and the centre (formerly the manse). The Centre @ St David's received planning permission for change of use in 2020 in order to operate as a community resource. The Channel View Community Centre is approximately 500 metres away from the site of the proposed new facility. The TLC Community Café is also open and is situated nearby at 76 Elm Drive which can be seen on the location plan at Appendix A.
- 5.6 In considering this proposal at its meeting of 7th July 2021 Cabinet received a report in relation to the proposal from ACCTS and requested that a consultation with Community Groups and residents be undertaken to get a better understanding of the level of support within the community.
- 5.7 A public consultation began on 9th August 2021 running for a period of 6 weeks and ending on 19th September 2021. The consultation consisted of an online questionnaire with hard copies also being made available within the community. A total of 1,285 questionnaire responses were received. The Report of the Consultation is included at Appendix B. A petition opposing the proposal with approximately 453

signatures has also been submitted to the Council. An online petition on the Change.org website entitled "Save Spar Field Ty-sign Risca" was started on 4th August and had 919 signatories on 20th September.

- 5.8 Of those who gave a view 91% disagreed and 8% agreed that the Council should lease an area of land at the Spar Field, Holly Road to allow a new Community Hall to be built. For those who disagreed the main reasons given were loss of green space, that they would not use the facility, increased traffic, and that there were already enough facilities. Of those that agreed the main reasons given were that they would use the new facility and that existing facilities do not offer the activities they want.
- 5.9 Additional correspondence was received from operators and occupiers of other community facilities including St Davids Church Hall, TLC Café, and the Risca Covid-19 Volunteers expressing concerns about the impact of an additional facility on existing facilities and these are included in Annex 5 to the consultation report at Appendix B. An email was also received from ACCTS in support of their proposal on 22nd September 2021 and this is included in full at Appendix C of this report. As can be seen from all the correspondence, there are claims and counter-claims on both sides of the argument.
- 5.10 Cllr. Bob Owen is Trustee and Treasurer at Channel View Community Centre Management Committee and on being consulted upon this Cabinet report responded by stating that the ACCTS comments regarding the use of Channel View Community Centre are factually incorrect in as much as:
- Risca Covid-19 Volunteers (RCVUK) are 'end-users';
 - nowhere near 30% of the space is occupied by RCVUK;
 - the committee has granted an office space, nothing more;
 - the Tiny Tots group are now up and running as are AGAPE;
 - the main hall has not been reduced in size, there is currently an overhang of RCVUK equipment to the one end of the hall but RCVUK are currently seeking a container to store this external to the building (at their cost). It is sectioned off and it has not affected hall bookings / usage;
 - the car park does not have fewer spaces;
 - The management committee have continued to work with Agape as they are (always will be) welcome to use the centre, but similarly to RCVUK they are ultimately end users.
- 5.11 Since the proposed letting of the land is a disposal of land held under the Housing Revenue Account (HRA), consent to the disposal under sections 32-34 of the Housing Act 1985 will need to be obtained prior to entering into any lease. Caerphilly Homes have advised that previous negotiations relating to the site involved the release of land adjacent to Hafodybryn, which was also the site of the Channel View Community Centre and scout hut. This site was considered to have some development potential by Caerphilly Homes for affordable housing. Whilst any agreement on a lease could be conditional on the lease of the scout hut being released, this is no longer an option as the scouts are not a party to the current proposal.
- 5.12 Cabinet have previously considered and given 'in principle' support for similar proposals, most recently on 27th March 2019, which did not ultimately progress. Caerphilly Homes highlight that in 2019 the Channel View Community Centre building was identified as not currently fit for purpose as a result of structural, locational, and functional problems that could not be addressed and it was proposed

to be closed. The proposed new facility was seen as a potential alternative but that also no longer seems to be the case. The 2019 report that went to Cabinet highlighted that, subject to valuation, an option existed to dispose of the existing Channel View site to develop affordable housing. The associated capital receipt would go into the Housing Revenue Account (HRA) or the land would be earmarked for future development of Council housing.

- 5.13 The potential benefit to the HRA has significantly reduced with this latest proposal. The HRA is a ring-fenced budget that is funded from tenants' rents to support the delivery of an effective and efficient housing service through maintaining and improving the Councils housing stock, there is little benefit to tenants or to the HRA resulting from this proposal.
- 5.14 Where a council is considering disposing of any land consisting or forming part of an open space under s.123 of the Local Government Act 1972 they must give notice of their intention to do so in a newspaper circulating in the area in which the land is situated, and consider any objections to the proposed disposal which may be made to them. Should Cabinet be minded to support the proposal in principle any material objections as a result of the public notice procedure will be included in a further report. In accordance with the Council's Constitution, as this relates to a disposal of land used for residential purposes (or capable of being used for that purpose), any final decision to dispose of land in these circumstances will be a decision of Full Council.

5.15 **Conclusion**

This proposal represents an opportunity for the development of a new community hall largely funded by external grant. The outcome of the public consultation indicates that the proposal is not supported by the community. Operators and occupiers of existing community facilities have expressed their opposition to the proposal. The land in question is held by the HRA and Caerphilly Homes consider that this proposal offers little benefit to tenants or to the HRA. It is therefore recommended to Cabinet that the request to the Council from ACCTS is declined.

6. **ASSUMPTIONS**

- 6.1 Should Cabinet decide to support the ACCTS proposal it is assumed that any material objections as a result of the public notice procedure required under s.123 of the Local Government Act 1972 where a council is considering disposing of any land consisting or forming part of an open space will be brought to Council in a further report. It is also assumed that consent to the disposal under sections 32-34 of the Housing Act 1985 will be obtained from Welsh Government prior to entering into any lease.

7. **SUMMARY OF INTEGRATED IMPACT ASSESSMENT**

- 7.1 An Integrated Impact Assessment (IIA) has been carried out in relation to the request from ACCTS. The IIA sets out a number of potential positive impacts of the proposal as it represents an opportunity for a new, modern, fit for purpose, community hall to be built in Ty Sign. The IIA notes that the facility provides an opportunity, through the delivery of a range of programmes and activities, to improve upon a range of outcomes which include, mental and physical health, education and employment opportunities, along with supporting those most in need. However, the public

consultation attracted a number of representations about the impact of the proposed new facility on existing community groups and the potential negative impact on the viability of the venues that they operate from and these concerns are reflected in the IIA.

[Link to full Integrated Impact Assessment](#)

8. FINANCIAL IMPLICATIONS

8.1 There are no direct financial implications arising from this report.

9. PERSONNEL IMPLICATIONS

9.1 There are no direct personnel implications arising from this report.

10. CONSULTATIONS

10.1 The consultees listed below have been consulted on this report. Any responses received from other consultees have been incorporated into the report accordingly. A public consultation was undertaken for 6 weeks from 9th August 2021 and the full Report of the Consultation is included at Appendix B.

13. STATUTORY POWER

13.1 Local Government Act 1972.

14. URGENCY

14.1 The decision will be subject to the “call-in” procedure.

Author: Rob Hartshorn – Head of Public Protection, Community and Leisure Services

Consultees: Mark S. Williams – Corporate Director, Economy and Environment
Cllr Ross Whiting – Risca West Ward Member and Cabinet Member for Learning and Leisure
Cllr Lisa Phipps - Cabinet Member for Housing
Cllr Nigel George – Risca East Ward Member & Cabinet Member for Waste, Public Protection and Streetscene
Cllr Arianna Leonard, Risca East Ward Member
Cllr Philippa Leonard, Risca East Ward Member
Cllr Bob Owen, Risca West Ward Member
Councillor D.T Davies, Chair of Environment & Sustainability Scrutiny Committee
Councillor A. Hussey, Vice Chair of Environment & Sustainability Scrutiny Committee
Jeff Reynolds – Sport & Leisure Services facilities Manager
Jane Roberts-Waite - Strategic Co-ordination Manager, Housing
Kevin Lodge – Community Centre Services Manager
Rob Tranter - Head of Legal Services and Monitoring Officer
Lynne Donovan – Head of People Services

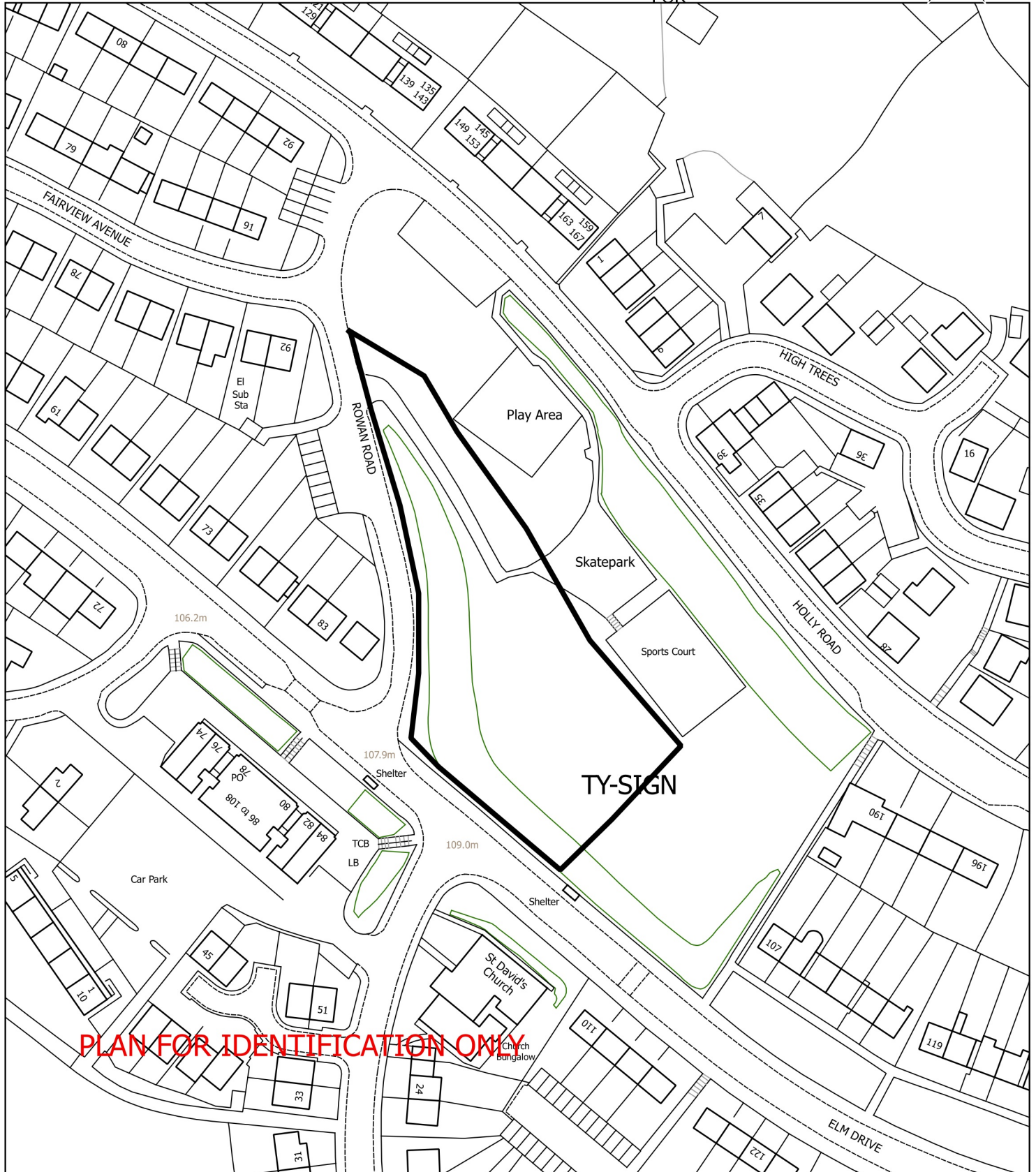
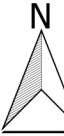
Anwen Cullinane - Senior Policy Officer (Equalities, Welsh Language, and Consultation)
Steve Harris - Head of Financial Services & S151 Officer
Mark James – Principal Valuer

Background Papers:

Cabinet Report – “Proposed community centre in Ty-Sign, Risca to replace the Channel View Community Centre” 14th March 2018
Cabinet Report - “Proposed community centre in Ty-Sign, Risca” 27th March 2019
Cabinet Report – “Proposed Community Hall in Ty Sign, Risca” 7th July 2021

Appendices:

Appendix A: Site of Proposed Community Hall, Holly Road.
Appendix B: Report of Consultation
Appendix C: Correspondence from Agape Community Church, Ty Sign (ACCTS) dated 22nd September 2021



PLAN FOR IDENTIFICATION ONLY

This page is intentionally left blank

Caerphilly County Borough Council

Consultation Report on proposed Community Hall in Ty Sign, Risca

Introduction and Context

The Council has been approached by the Agape Community Church Ty Sign (ACCTS) to support the development of a new purpose-built community hall in Holly Road, Tŷ Sign, Risca and are seeking to acquire a long term lease on an identified area of land to deliver the project.

The ACCTS have proposed that the new facility will be available for hire / access to all community based groups/organisations and aims to provide a modern, fit for purpose building in the Ty Sign area.

The ACCTS have secured external funding from a range of stakeholders including Welsh Government and the Big Lottery to support the project.

Before making a decision to lease the land, the Council's Cabinet agreed to undertake a consultation to allow residents to share their views on the proposal. The outcomes of the consultation will help inform the decision making process.

Methodology (What we did)

A formal consultation was undertaken over a 6 week period from 9th August 2021 to 19th September 2021.

To enable all those who wished to give their views to take part, the primary consultation tool was an online questionnaire. To ensure that those without digital access were able to have their say, paper copies were also made available at Risca Leisure Centre, Risca Library, Channel View Community Centre and local shops in the Ty Sign area, upon request by telephoning or emailing a central telephone line/mailbox. Approximately 500 paper copies were provided in total. All questionnaires were available bilingually. A copy of the survey can be found in Annex 1.

The questionnaire was designed to capture both the qualitative and quantitative data required for the authority to make an informed decision about leasing the land for the development of a new community hall and sought resident and stakeholder views on proposal to develop a new community hall at this site. Questions were also included to enable an assessment of the activity levels of the population, the types of facilities that resident are currently using. As this consultation was focussed on a specific geographical area (Risca), postcode analysis provided context for the response data and equalities monitoring data enabled an assessment of the impact of the proposal on all sectors of the community.

Engagement

Key engagement mechanisms included:

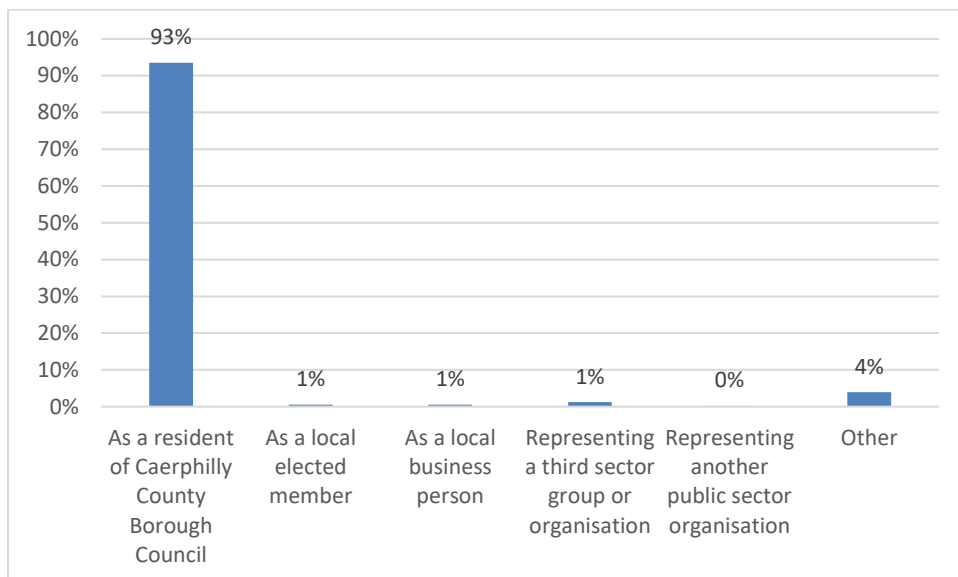
- Posters including a link to the online survey accessed via a QR (Quick Response) code and contact details to request a paper copy. Posters were displayed in Risca Leisure Centre, Risca Library, Channel View Community Centre and local shops in the Ty Sign area.
- A link to the survey from the consultation pages of the Council's website
- The consultation was promoted at various intervals during the consultation period via the Council's social media channels

Key results

Responses

Overall, 1285 responses were received (1012 respondents completed the questionnaire online and 273 paper copies were submitted).

Graph 1: Respondent profile



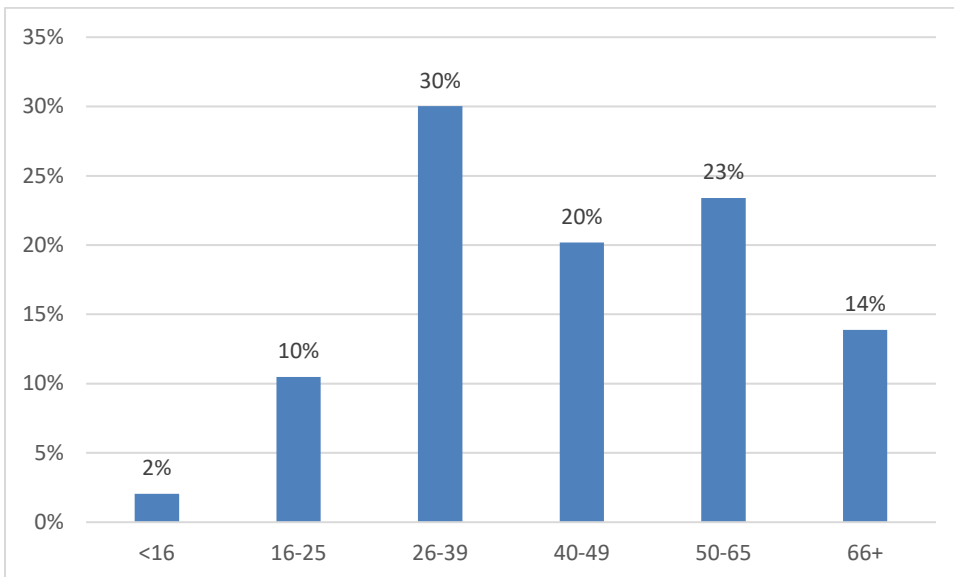
As shown in **Graph 1**, of those who responded, 93% (1201 individuals) indicated that they were a resident of the county borough.

Of the 1282 postcodes provided, 1099 were within the NP11 6 area (Risca/Ty Sign postcode). This highlights that 86% of respondents were from the immediate local area. A further 8% of postcodes fell within the wider NP11 area.

Additionally,

- Of those who gave a response to the question (n=1226), 36% were male and 64% were female.
- **Graph 2** provides a breakdown of respondents by age and shows a good distribution of responses across the age groups from those 16 plus.

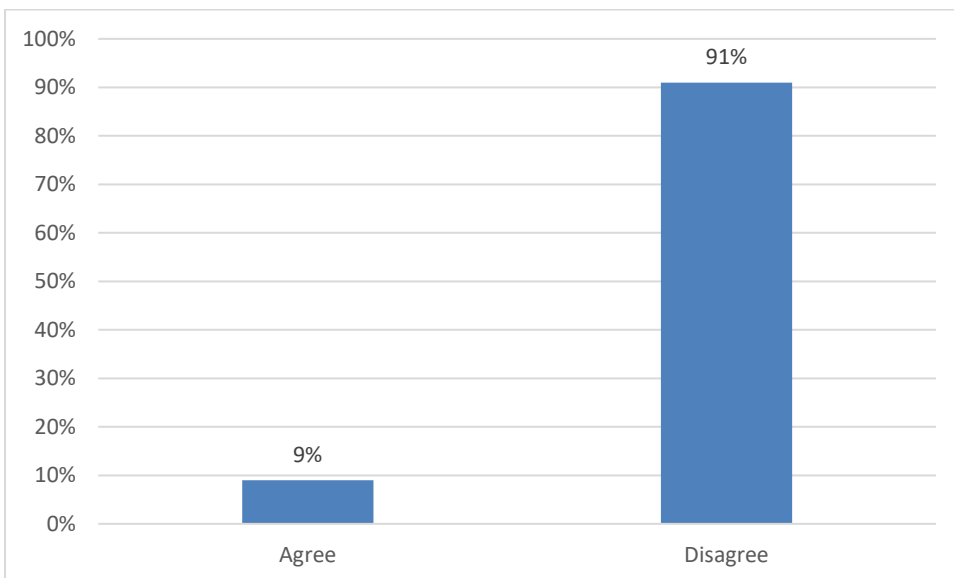
Graph 2: Age breakdown of survey respondents



Respondent views

As shown in Graph 3, 91% disagreed that the Council should lease an area of land at the Spar Field, Holly Road to allow a new Community Hall to be built.

Graph 3: Percentage of respondents who agreed/disagreed that the Council should lease the land to allow a new Community Hall to be built (n=1194)

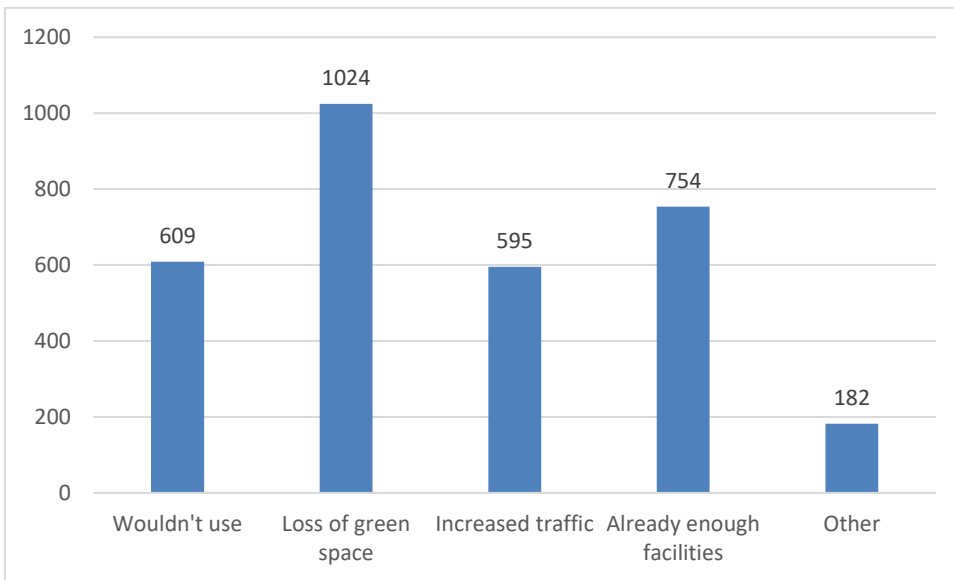


The main reasons given for agreeing with the proposal was that the respondent would use the new facility (68 responses) and that existing facilities do not offer the activities they want (47 responses).

Other reasons given in the comments mention that it would be an improved facility for the community. A full digest of comments is included in **Annex 2a**.

For those who disagreed with the proposal, **Graph 4** shows the number of responses to each of the options (note this was a select all that apply question) and highlights that a loss of green space was the main reason for disagreeing with the proposal. For those who said “other”, many mentioned that building on this land would result in a loss of space for children to play on. A full digest of comments is included in Annex 2b.

Graph 4: Reasons given for disagreeing with the proposal (number of respondents)



What activities do you currently participate in at local community facilities?

Popular activities that respondents currently participate in include: parties, children’s groups, café, coffee mornings church, bible study, exercise.

Full details are included in **Annex 3**.

Activities that respondents would like to participate in that are not currently available

Activities that respondents would like to participate in that are not currently available in the local area include: new play area for children, children/youth activities (indoor and outdoor), dog walk area.

Full details can be found in **Annex 4**.

Annexes

- Annex 1 - Questionnaire
- Annex 2a - Other reasons for supporting the survey (comments)
- Annex 2b - Other reasons for disagreeing with the proposal (comments)
- Annex 3 - Activities that respondents currently participate in
- Annex 4 - Activities that respondents would like to participate in
- Annex 5 - Additional correspondence and petitions were received:
 - Email from Cllr Arianna Leonard dated 19th September 2021
 - Letter from Tim Crahart, St David’s Methodist Church and the Centre @ St David’s dated 17th September 2021
 - Emails from Dawn Derraven, Risca Covid 19 Volunteers dated 12th & 19th September 2021 including online petition details, Facebook poll and Social media screenshots.
 - Email from Jane Burris, Shirley Hobbs and Zoe Davies, TLC Risca dated 6th September 2021
 - A hard copy petition opposing the proposal was also received.

Annexes to the Consultation Report on Proposed Community Hall in Tŷ Sign, Risca

- Annex 1 - Questionnaire
- Annex 2a - Other reasons for supporting the survey (comments)
- Annex 2b - Other reasons for disagreeing with the proposal (comments)
- Annex 3 - Activities that respondents currently participate in
- Annex 4 - Activities that respondents would like to participate in
- Annex 5 - Additional correspondence and petitions were received:
 - Email from Cllr Arianna Leonard dated 19th September 2021
 - Letter from Tim Crahart, St David's Methodist Church and the Centre @ St David's dated 17th September 2021
 - Emails from Dawn Derraven, Risca Covid 19 Volunteers dated 12th & 19th September 2021 including online petition details, Facebook poll and Social media screenshots.
 - Email from Jane Burris. Shirley Hobbs and Zoe Davies, TLC Risca dated 6th September 2021
 - A hard copy petition opposing the proposal was also received.

Consultation on Proposed Community Hall in Tŷ Sign, Risca

The Council has been approached by the Agape Community Church Ty Sign (ACCTS) to support the development of a new purpose-built community hall in Holly Road, Tŷ Sign, Risca and are seeking to acquire a long term lease on an identified area of land to deliver the project.

The ACCTS have proposed that the new facility will be available for hire / access to all community based groups/organisations and aims to provide a modern, fit for purpose building in the Ty Sign area.

The ACCTS have secured external funding from a range of stakeholders including Welsh Government and the Big Lottery to support the project.

This consultation allows residents to share their views on the proposal to lease the identified area of land and is one part of the process the council will use to make a decision on this issue.

Please see link to overview of the proposed community hall and the area of land subject to the lease request.

The consultation will only take a short time to complete and is available to both Welsh and English. **Please note the closing date for completion of the consultation is 19/09/2021.**

How we use your personal information: The information you provide will be used by the service area relevant to the consultation / survey within Caerphilly County Borough Council. Views expressed will be collated together and used to produce a summary report. Depending on scope / nature of the survey / consultation, the summary report will be used to evaluate and remodel services / priorities etc. We will not keep your views in a way that will identify you for longer than is necessary.

You have a number of rights in relation to the information we hold about you, including the right of access to your information and the right of complaint if you are unhappy with the way your information is processed. For further information on how we process the information and your rights please follow this link: www.caerphilly.gov.uk/CaerphillyDocs/FOI/PrivacyNotices/PrivacyNotice-Consultations-Surveys.aspx
(<http://www.caerphilly.gov.uk/CaerphillyDocs/FOI/PrivacyNotices/Privacy-Notice-ConsultationsSurveys.aspx>)

1. I am responding to this survey.....(please select only one) *

- As a resident of Caerphilly County Borough Council
- As a local elected member
- As a local business person
- Representing a third sector group or organisation
- Representing another public sector organisation
- Other _____

2. My postcode is * _____

3. Do you agree or disagree that the Council should lease an area of land at the Spar Field, Holy Road to allow a new Community Hall to be built?

- Agree
- Disagree

4. What are the reasons for your answer? (select all that apply)

- Existing facilities don't offer the activities I want
- You would use a new community hall
- Other _____

5. What are the reasons for your answer? (select all that apply)

- I would not use the new community hall
- Loss of green space
- Increased traffic
- We already have enough community facilities in Ty Sign
- Other _____

6. What activities do you currently participate in at local community facilities?

7. Are there any activities that you would like to do that are not currently available in the local area?

8. Any other comments?

9. If you feel that this proposal will affect you as an individual because of any of the following (age, disability, ethnic origin, gender, gender reassignment, marital status, religious belief or non-belief, use of Welsh language, BSL or other languages, nationality or responsibility for any dependents) please give details below.

About You

As this is a small scale survey, the full range of equalities monitoring questions have not been included. These questions are optional. Your response will help us to ensure that we achieve a representative sample and will help us to check whether the services we provide are meeting the needs of all of our local communities and residents.

10. I am...

- Female
- Male
- Prefer not to say
- Other _____

11. Age group

- < 16
- 16-25
- 26-39
- 40-49
- 50-65
- 66+

12. What is your preferred language?

- English
- Welsh
- Prefer not to say
- Other _____

13. Do you consider yourself to have a disability?

- Yes
- No
- Prefer not to say

Thank you for completing the survey

Annex 2a: Other reasons for supporting the proposal

A community hall would be a wonderful facility.
A great improvement for the community.
A great resource for the community
A new facility would engender a sense of life and value into what is currently a 'downbeat' area. It would certainly be used by the community for the community.
ACCTS have a real heart for the TY Sign community and need a building which they and the community can use to offer more community activitiesivity
Am keen that all areas of Social Deprivation get the facilities taht they deserve
Anything that brings development and money and jobs into an area that is not Cardiff for once could be a good idea. I like the thought this will potentially bring more jobs to the area.
At the moment it's just dead space witch is not used
Becasue Ty Sign needs to be invested in. IT's grown lots and teh facilities already here don't meet every required need. they are not modern or attractive. It would be nice to have a building we don't have to apologise for. Becasue it would give better use of green space
Both the above. I understand that this project hasn't cost the Council in terms of planning, building or running the hall etc and yet there is a huge community benefit to a new hall that everyone can access. Channel View isn't fit for purpose, even with recent modifications. There is less room now cv19 group is there, and they are doing good work, so it is good for them to stay, but it makes it less useful to others. A new hall would feed into Caerphilly's wellbeing strategy, especially under the wellbeing of future generations act, and my understanding is that ty sign is a communities first area? See below for more. (Multi choice doesn't work).
Existing facilities are not fit for purpose
Facilities like this are needed
Good, purpose built community hall space are great asset to the community
Have you seen what exists? Drab, messy, unattractive, ugly, run down, embarrassing. I'd be embarrassed to hold stuff in any of the other 'facilities'. Claims that the tlc cafe does the job isn't true based on its size. Its really unwelcoming. What reason would I have to use st davids which is run down and shabby.
I believe that the plans will allow more oppourtunities for the area, and the plans also show that there will still be plenty of green left.
I feel this building could be complimentary to the other local facilities and although taking up some of the green space, if used also for youth work activities, could provide alternative play facilities for babies, toddlers and teenagers which is much needed. This could also deter some of the anti social behaviour happening on the field and offer diversionary activities for young people as well as a wider community facility
I think anyone offering to build a community hall should be encouraged!
I think it would be a good facility to have
Improve facilities
It is offering unavailable services to the community.
It would be nice to use a modern facility which is disabled friendly
More facilities should be available for the community to use
My choir would use the hall for a concert. Plus it's quite clear that the community would benefit from the community centre which would be open and available to so many groups and individuals, bringing increased opportunities and well being to the community.
No youth center for the kids atm so this would be a great asset
One place to access community groups that at the moment are scattered around tysign
Opportunity to provide shared space for activities that build community
Other activities for the community
Safer, more modern/up to date facilities

<p>St Davids is the only hall available for larger groups on Ty Sign itself. Until recently it was fully booked during the week. Channel view had about nine groups hiring it pre-covid . Risca C19 group have reduced the size of Channel View , and it is less user friendly for our needs .They are present Monday to Friday. The kitchen need s redeveloping but the issue of the infrastructure of Channel view has not really ben addressed. Channel view only recently was called a liability by the Council and I'm told that in 2014 it needed over £100,000 of remedial work. I'm told there is asbestos in the ground . Longterm Ty sign needs a new Community hall to accommodate all the existing groups and provide community space for the future.</p>
<p>That piece of land is currently not used and I think it could be put to better use.</p>
<p>The Channel View Community Centre has significant limitations on its capacity and facilities.</p>
<p>The 'community' backlash from the other halls in the area make me feel very uncomfortable about using them</p>
<p>The construction of such a building would benefit the community in so many ways as well as offering a place of worship for people to attend if they choose to do so.</p>
<p>The facilities are needed and the Church is a bastion of care.</p>
<p>The facilities in the old community centre are a bit run down and a newer building would be so much better and more flexible too.</p>
<p>The new hall does not cost tax payer money. The Channel view hall costs tax payers.</p>
<p>The project is a great idea for the area</p>
<p>There are no community halls in the area</p>
<p>There would be more activities for those living in the area</p>
<p>This will give the community a great opportunity to have a facility that this is just for them. This will hopefully allow access for children and young people that should minimise the rise in ASB around the skatepark</p>
<p>TLC Cafe is too small for more than just a cafe, St David's already host Mythrin each morning, is only 1 room and has very little kitchen space or facilities. Channel View has structural faults, very little adequate kitchen facilities much of which is being used, I believe exclusively, by RCVUK. One side room is also being used by them meaning ther other side room is now a storage space & cannot be used for other purposes. A hall on the field would be a larger facility actually on Ty-Sign as many people, especially with buggies/children, don't want to go up & down the hill for activities. More activities could beheld for Ty-Sign in a good sized usable space, including kitchen, with a garden area as well, not all green will be lost, & better access to the field.</p>
<p>To be placed within the community to continue helping and supporting the community</p>
<p>To be placed within the community to continue helping the community</p>
<p>Ty-Sign estate is under-supported and will benefit from the presence of a community space run by people whose care is for those who live on the estate</p>

Annex 2 b: Other reasons for disagreeing with the proposal

A lot of trouble with drug users on holly Road now police and police helicopter called every month
Absolutely no need. There will be dangerous access.
Agape church's beliefs
All of it! We don't need it, don't want it. No-one will listen to us though.
All of the above
All of the above
All of the above
ALL OF THE ABOVE
All of the above
All of the above
All of the above plus the fact the so called community hall would only be open for the agape church members.
All of the above!
All of the above!
All of the above!
all of the above! With a major stress on loss of the only decent green space central to ty sign
All of the above, plus safety of children will be put at risk
All of the above. Ty Sign already has two community halls that are fully booked. Another hall would destroy their revenue. Ty Sign does not have much green space so to lose what little we have would be of great detriment to the whole community. This will not be a 'community hall' this will be a church.
All of the above. We, as a Risca/Ty Sign based charity support hundreds of local people every week. We work from one of the community hall spaces (channel view community centre)already based a stone throw from where the new hall is proposed. Channel view community centre has had much work done to improve it during covid, so have the centre at St David's, another community hall directly opposite the spar field and the tlc cafe. All provide essential community services so there is no need for another new hall. It would take away the revenue and income from the current providers. Ty Sign seriously lacks in green space and with such a high level of deprivation in ty sign, families and individuals do not need another provision that has to be paid for, they need green space that is free to use.
All the above
All the above answers also
All the youngsters drinking & drugs, making trouble there
Already an under used church hall in Ty Sign
Already one by the field
Another building is not needed. It would also be out of place.
Biased answers above.
Children actively use this space. Would be a detriment to them
Children often use the skate park, along with my own, I would not want behaviour issues up there, in addition to influencing youths to deviant
children will have no green space left to play on everything is being taken away to be built on . many years ago this land was also bequeathed to the children of risca & ty-sign so this needs to be looked into. also the trees there are many years old surely they cannot be touched
Church is private entity and once the lease is given they can use building in anyway they see fit with no public input. There plenty of waste land this could be built on including right by channel view community center (the old garages between There and hill street)
community hubs exist
Completely unnecessary

Conservation of the last Green Field up here on Ty Sign. It will destroy the wild animals habitat of animals that live on Spar Field
Disabled access has not been considered which alienates members of the community before its even been built
Don't understand - should this be shown to me as a supporter of the hall?
ems already existing in the area
Excellent opportunity for new community cohesion.
Fix up other older buildings and or use some of the land which is concerted area and not take away more green
for children only
Fully support the initiative and development of a community facility
Having green space next to the park allows the kids to have somewhere to kick a ball (other than the street) play in the park and take a skate board/scooter all in one place keeping them safe not wandering around not damaging property in other places, I think also increased traffic to the area is going to be a major hazard and increases in people to the area is also a risk to the children. I also thought the land was gifted to the people when opened how can it be rented or repurposed then?
Having grown up a local lad myself I think it would be unlawful to take the playing field that myself and many others grew up playing on and that many others will continue to play on
Hidden agenda
I agree to the proposal
I believe that area should be maintained for use by the children and alternative site found. eg. Waste land at back of elm drive.
I do not agree with the children losing playing space to accommodate more drug users etc in the area. We have enough trouble in Tysign due to Holly road flats without another area for them to congregate
I find this consultation to be very oddly structured and very bias considering I have ticked to say I am in favour yet I am being asked for reasons why I am against it???
I know friends who would really value such a community facility
I live in close proximity to the area I feel intimidated already to walk near the area especially due to youths congregating there and feel that this construction would make this situation worse
I live opposite and the reason I purchased a property in ty sign is the amazing views from my property, building this so called community centre would obstruct the views we have, along with many other reasons.
I support a new build
I wouldn't use
I'm sure there are plenty of empty council buildings in the local area which could be sold/leased/donated and repurposed for use as a new church. Also, there are plenty of areas in Risca which are not play areas that could be used. The only logical reason local residents can think of for the council even considering the Soar field as an option is money. We all think the council will get more money by doing this and it makes absolutely no sense given St David's church is literally 10 metres away from the field - why does there need to be another one so close...again, residents believe this is simply down to the council money grabbing. Again, this makes no sense when you could just sell/lease one of your empty council buildings. Honestly, this is a terrible idea and is all about money for the council. For goodness sake, stop thinking local residents are naive and use some common sense, there are far better alternatives.
Im disabled this allows me to take my grandchildren and dog out locally..there is loads of opportunities for community halls in risca ..we need thos green space tu sign is like a concrete jungle and lots of children play on ..
Increased noise
Is there a proposal for car parking

Is this rigged? I thought all these issues were passed as okay by Council's policies? What's the councils position on these things - thought Green space left over was within your policy limits? Thought the traffic reports were in and acceptable? Again, have you seen what the existing ty sign facilities are actually like?!
It breaches the Welsh government policy on green spaces.
It is a positive step forward looking to the future.
It is not a community hall it is a church hall for the garpe church and it won't be used by the local community it will be used by members of the church that come from Cardiff and Bristol and there's already a church hall on the other side of the road less than 100m away from the proposed site (the church has lied and misrepresented this project from the beginning because this is an impoverished area they think it's OK to take advantage of us)
It isn't appropriate for this center to be by a park and skate park
It would be an eyesore and potentially lower the value of houses in the area. It would make the currently desirable houses of high trees less desirable and would further increase noise and air pollution in the immediate area, roads which are mainly only used for access to properties now. There are also many children who live in the area and the Church propose that the building be in use until 11pm each night
It's the heart of Tysign, where children play. Memories were made by generations
It's the last bit of play area for the children
It's the only maintained green space for public access in Ty Sign/Trenewydd area
Its a childrens play area!!!
It's not needed, nobody wants it or is asking for it. Local children make good use of the park how it is and traffic on Fairview and Holly Road is bad enough as it is
Its the only green space in Ty Sign
It's the only green area in ty-sign that all ages use ! Would be disrespect to everyone that lives here and uses the area very often. Also there are fee sites around the area that could do with something done with them as they basically unused ground so why can't they put it else where if they really feel the need?
keep green play
Kids need green space to play. Building not suitable on this land
Kids Safety
Lack of transparency by the Agape church.
leave it for the kids to play
leave the fields for the kids
Leave the space for the play area as is.
Living a few doors down its going to affect us in all sorts of way, we have enough trouble with Holly road you want us to have more ? Just because we are almost Newport about time you looked after Risca we pay our taxes to and we dont want this. Listen to the people not your pockets also this land was left for the children not to line your pockets
Losing half of playarea for kids and i would not feel comfortable with my children going to the park with increased traffic and carpark so close, and the little bit of area they would have to play is on the otherside from skatepark/park otherwise
Loss of area for the children of the area to play safely
LOSS OF GREEN SPACE, INCREASED TRAFFIC AND PARKING PROBLEMS AND WE ALREADY HAVE ENOUGH COMMUNITY FACILITIES IN TY SIGH. ST DAVIDS CHURCH AND HALL.. TLC.... CHANNEL VIEW SOCIAL CLUB.....PLUS RCV UK COMMUNITY ACTIVITIES
Loss of greenspace to put a concrete building on. There is a large plot of land by alvphavet carpark going to waste, why not build there, large concrete base and space for off road parking, ideal and no loss of green space.
Loss of playing area for children
Loss of playing area for children
Lots of unused building already in risca and surrounding area that could be used

My children play on the field with their bikes regularly and we have games on the field and we have done for many years like my parents did with me. Please save all our children's playing field.
N/A
Need for green space in the estate, this field is used extensively by local children as it is close to shops and skate park
Need it for the children/youngsters
New facilities would benefit the area
No need for another community hall. Why build on the only green playing area.
Noise and more troubled people that would go onto holly road to meet other people and go into there blocks , we don't need anymore troubled people on holly road we have enough of this people already that calls problems for this street , plus the children off ty sign would have less places to play in too.l
None of the above
not available parking
Not enough community facilities
not enough sapce
NOT NEEDED - insufficient green playing fields for children and adults for recreational and well being activities. Already sufficient existing facilities and there's a church opposite. TOTALLY UNNECESSARY and would be dterimental to the local community who have not been surveyed by applicants
Not required
Not required, already existing halls in area
Other buildings within the area which could be used
Parking in other areas surrounding the field
Please give some space for nature. So sick of seeing hedgehogs killed on our roads.
Plenty of empty builds in the area why not renovate
Plenty of halls around the area already
Plenty of unused brown sites other than this green site
poor use of a green space
Potential for attracting further drug related crime to the area
Puts other community halls at risk
Really good to give more options for ty sign
Reduces play area for children
Risk of life to children/dog walkers using Rowan Road
rough
Rowan road is too narrow at the moment, without extra traffic turning in and our. Accident waiting to happen
Ruin the view
Safety of children
Safety of our children
Safety of tge children playing on the skate park.
Saint David's
Saint David's
See above but I am worried about loss of green space. Can we not have a garden with hall?
Should follow government policy and reuse previously developed land instead of developing on green spaces
Street parking
Takes away the space for the children
That is a space for children and the community to play. It's located by a park.
That should be left as dedicated green and flat space for all
That's where children play
The area does not have enough community facilities

The area is great for kids to play on
The areas where children can gather to enjoy safe and enjoyable activities together to promote ideas of fair play and community activities are dwindling locally. We need the green space
The bottom three options
The building is essentially Church. There are plenty in the local area
The children use that space to play, it works well alongside the current skate park and multi use sports area. My 13 year old plays there almost daily with his friends and was very disappointed to hear that the green space may be lost
The community centre in Channel View is all we need. Why build on the only safe green area in Ty Sign.
The community DO NOT WANT IT - is it that hard to understand??
The facilities available are more than adequate!
The field and surrounding areas are already used, mainly by local children
The green is regularly used by children of all ages and an increase in traffic so close to their safe space is too much of a risk.
The group are not being honest with the community. Their recent flyer being put out to the residents implies association with other community groups and it does not mention themselves, the group bringing it forward, the Agape church?
The land was left by the person who sold ty sign for the children and was never to be built on
The noise will carry over to the houses causing disruption
The options above are biased towards my answer being no - I totally agree with the proposal to improve wellbeing of the individuals who live in the community.
The project is a great idea for the area
The skate park will be ruined
The space is widely used by the young people in the area using the muga and the skate park. This takes up such a big part of the green space and there is no other green space in the tysign area for children to have the freedom to play and experience.
The space was donated for use for children only
There are already unused buildings in Risca and unused areas of land that could be utilised.
There are more than enough churches/community halls in Risca. The green space is needed far more by children than a church.
There are other buildings in the area that could be renovated and used instead of using our limited green space for something that the community already has.
There are other place to put it other than a park and skate park that is used all the time
There are othere buildings hardly used in our area, they should be used instead.
There are plenty of community facilities which are underfunded, why not support and leave the field alone. Taking away the o ly green space left in TySign is unfair and unnecessary.
There at least 8 premises in the area that can provide rooms/halls & space without buildings on the only green flat space
There is a perfectly good church just below the green that is never used. Take that over !
There is a skate park there already for the children and they also play on the field
There is no facilities in Ty-Sign for children. Leave it green. There are enough churches as it in the area
there is staff around already
There will be no benefit for the UOU fer generation in the area. They have already lost so much there's about 4 community halls? why need another one
There's not many places for children to play outdoors as it it but enough churches for people to go to
They should use the money to buy and do up Ty-Sign club, I miss that place x
Think it's a disgrace that no one is listening to the views of the local residents
This area is for the use of children and other groups

This is a Church establishment and with numbers increasing for atheism and Humanism this isn't needed and would be short term.
This is a valuable area to many young people in ty sign. They play football on the FLAT grassed and is a congregation point for our youths. There is a church directly opposite the green! Use this building, dont agree to build another
This is the heart of Tysign, where there is freedom to let your children play in the snow. Generations have played on that field. We don't want it
This would attract unwanted people hanging around & would encourage the wrong type of people to the area - TY SIGN needs the grassed area for space for children to play
this would further increase noise in what is usually a very quiet and family friendly area.
Towers above adjacent dwellings- light issue
Traffic prob
Use for children
waste of money
We are running a social enterprise with a cafe and the availability of room/building hire for groups
We do not need another church or community hall we have enough in Risca already
We do not need it
We dont want it. We dont need it.
We have enough facilities around Ty-sign that already offers all these activities. I find it's unfair on the kids who use the park and field as it's the only green we have left that is ours.
When John Charles Price died and land etc was sold the family bequeathed the land to the children of Risca. How then can this building go ahead?
Why destroy good green land for concrete, it will be a real eyesore for the majority with minimal use by the minority. Green is clean. Is that not what we all want, more green conservation less concrete damnation!!
Why has this come up when I agreee? It's a very skewed question.
Will the hassle we receive from Holly Road we really dont want some else so close
Would increase traffic flow on Rowan Road which a lot of young children cross for the park, already dangerous enough that little bit of road
Yes please for a community hall
You can't select all that apply? I would choose 1,2 3 and 4.

Annex 3: Activities that respondents currently participating in

A church is a great place for the community but there are plenty of buildings that could be used instead of taking playing spaces away from the young ones. A properly robust and usable children's adventure area would be money well spent if vandals would leave it alone
A few
A few
A lot
A member of the pensioners group Risca. I help maintain our building by gardening and doing minor repairs where needed.
Access a local hall to volunteer with RCV UK
Activists is active halls. We have a leisure centre and a community hall near lower Wyndom terrace
Activities at both At David's and now TLC
Activities at St Davids
Activities with my children such as football, rugby, frisbee, catch, tag etc. Also Walk the dog on local community facilities. I also swim, play football and coach youth football in local community facilities.
Adult learning
Afternoon tea at the cafe
Agape Community Church
All
All my children have used St David's hall for playgroup.. Ive rented channel view for parties..
All that is already there.
All with my children
Already use various halls locally for British legion use
Always out walking in our beautiful countryside, supporting cwmcarn forest, walking along our beautiful canal. We do not need this taking away our green space when there are plenty of other buildings that can be utilised.
and require access to community space on Ty sign for adhoc activities that occur throughout the year that can accommodate larger groups
And skate park
Any activity tlc have put on over the years for children. Many children have learned to ride their bikes on the only flat green in tysign.
any available for oaps
any that become available
Anything and everything
anything on going with the church and the centre will take away income for the church
Art
Arts and crafts activities
As an elderly person I go to meetings that are pertinent to my age, wherever they may be.
As for the proposal of an area for wedding receptions etc, there is a perfectly good rugby club in Risca with a massive private car park. Which again I have used for parties.
As I work and got 2 jobs. I Don't have time for activities
As many as i can around my work
Attend church (outside of the pandemic)
attend church activities st Davids.Uae the local leisure centre.Take my grandchildren to the skate park and walk around the green field while they play
Attend fundraising events
Baby and toddler
Baby groups
Baby groups

Bad hip don't walk far .
Banger racing
Because of my health issues , it is somewhere close where I can exercise (walking) When my great grandchildren visit I'm able to entertain them in the park and on the field and, like many others,I'm able to exercise my dog there.
Being an older person it's The TCL CAFE mostly but also the Senior Citizen's hall. I take the grandchildren to the small !! Park and also the skateboard park. Plus playing ball on the green by the skateboard park sometimes a picnic too.
Bible group, community gatherings
Bible Study Group in TLC before Covid stopped it
Bible study, community breakfast, book exchange, dvd exchange, bingo, keep fit
Bike riding
Bingo
Bingo, volunteering in community groups,
Bingo. Attend local TLC regularly, parenting network, sewing.
Bingo. I attend the local TLC cafe regular, sewing classes, parenting network
Bingo. rambling. Bird watching
Birthday Parties
Birthday parties, coffee morning, fitness class, fun days, training, children's clubs.
Birthday Parties, community fun days, flying start playgroup.
Birthday party hire (children and adults)
Bowls
Bowls at pontymister welfare community club
Bowls until Caerphilly C.C. closed it down.
Boxing
Brought my children and grandchildren to play
C-19 volunteers
Cadets, usage of library etc.
caerdded y ci ar y cae
Cafe
Cafe
Cafe
Cafe
café field
café food bank rugby club
Canal walks
Canals
Canals for walking and running
Celebrations
cerdded fy nghi
Chair yoga
Chair Yoga at Channel View Community centre. Library when it was open!!!!!!
Chair yoga, toddlers groups, RCV tin on the wall
Channel view community hall for food bank
Charity RCV Volunteer
Charity work for residents of risca, my children use this area to play and see friends
Children events mainly and birthday parties
Children groups etc,
children in the park
children play groups
Children went to play groups at st David's

Children's birthday parties
Children's clubs
Children's parties.
Childrens activities
Children's activities
Children's activities, physical, social & educational, council meetings, adult social gatherings. Birthday parties/private functions.
childrens crafts, childrens groups, mother and toddler, birthday parties, community fun days, training sessions, exercise classes, coffee mornings, holiday groups.
Childrens groups
Children's groups
Childrens groups and party etc pre covid.
Children's Park, skate park, football, walking
Childrens parties/occasionally bingo
Child's playgroup
Choir
Christmas fayres
Church
Church (Agape Community Church Ty Sign); training; band practice; socialising; charitable work including Mothers and Toddlers, Street Pastors, Christians Against Poverty (CAP), Night Shelter
Church (Agape Community Church Ty Sign); training; band practice; socialising; charitable work including Street Pastors, Christians Against Poverty (CAP)
Church at Channel View, Tots at Channel View, Street Pastors at Ty-Isaf, Night shelter (various facilities), Christmas hampers etc.
Church for worship, Leisure centre for sport, community hall for choral singing
Church on Sundays
Church service
Church services
church services, café, breakfast club, school assemblies
Church, cafe
Church, cafe, pole fitness, help with the centre @st David's.
Church, Coffee mornings, Events like fairs and markets.
Church, community counsellor, trustee of Channel View Community Centre, arts and crafts at TLC
Church, group bible study
Church, music. Walking.
Church, playgroup, cafe, swimming
Church, Ty Sign Tots, Management Committee
church.
Clubs
Coffee in the Park
Coffee Morning
Coffee morning at waunfawr park community garden
coffee morning 1c 3 days a week exercise class in the st David's hall field to walk play with my son
Coffee morning, food bank,
Coffee morning. Slimming. Socialising
Coffee mornings
Coffee Mornings
Coffee mornings
Coffee mornings
COFFEE MORNINGS IN RISCA PARK, CHAIR YOGA, CRAFT SESSIONS, LEARNING OPPORTUNITIES. FOOD BANK, TIN OF A WALL.

Coffee mornings sewing classes .
Coffee mornings, craft days, senior citizens, lunches etc.
Coffee mornings, fitness classes, social inclusion, digital inclusion, food parcels, befriending services, recycling projects, community cohesion, children's clubs, men's clubs, homelessness support, carers support, benefits advise, tenancy support, vulnerable people support, birthday parties, fun days, wellbeing sessions, mental health support,
Coffee mornings, Senior citizens club..toddler groups
COFFEE MORNINGS, YOGA, ARTS AND CRAFTS
Coffee mornings, yoga, craft sessions, sign language courses, helping the elderly and vulnerable, volunteering.
Coffee, playgroup, chair yoga meetings
Coffee, TLC cafe for snacks, TLC for activities, yoga, coffee morning in channel view c c crafting with RCV uk knitting and crochet craft with RCV uk in Chanel view community centre, Theatre shows in Chanel vies. The last one was brilliant.
Community
Community activities arts and crafts. Children use youth facilities
Community events
Community events crafts
Community events such as one taking place 14th August. I regularly use the park on the site also. Attended birthday parties at Channel View and risca leisure center. There is no need for additional hall services
Community fairs (usually outside in the green space in question).
Community halls
Community meetings
Community meetings, volunteers, exercise, children's activities
Computer class
Concerts
Consultation services
Counselling services etc at Time Counselling and Wellbeing Centre.
Craft days
Craft groups, coffee mornings, choir practice. All pre Covid but hoping to return soon.
Craft sessions
Crafts, fayes parties dance group my child Goes to
Cricket
Cricket at pontykeys (pontymister) community club
Cricket, rugby, walking
Cubs, TLC activities and the st David's hall and church.
cuppa at my local cafe
Currently I've not needed to use the local facilities but I know people who use them and people who have gone to great lengths to develop what is already there. I wouldn't want to see all their hard work go to waste especially as those groups have been at the heart of the community throughout the pandemic.
Currently Risca Male Choir.
Cycling
Cycling leisure centre
Cycling running gym walking
Cycling walking use skatepark
Cycling yoga running
dance
Dance
Dance and fitness classes.
Dance class at a church hall

Dance classes and running
Dance classes fitness classes martial arts
Dance, boxing, parent network
Danceing, church at St David's, parties
Dancing
Dancing
Dancing , gymnastics
Dancing and football clubs
Dancing exercise class
Dancing football
Dewi Sant playgroup which is an education provider at St David's church hall
Does it matter?
dog waking and fooball
dog waking football ball games
Dog walking
Dog walking
Dog walking
Dog walking
dog walking
Dog walking
Dog walking
Dog walking
Dog walking
Dog walking
Dog walking
Dog walking / football on the field
Dog walking and enjoying nature when possible. This help my mental well being in peace as traffic and too much people I am uncomfortable with.
Dog walking and my children play there.
dog walking ball games
dog walking TLC rugby
Dog walking, children playing
dog walking, occasional picnics, walking, my son uses the skate park and football area.
Donating to local food bank
Enjoy the green space
Enjoy the local landscapes with the grandkids
Enjoyment of (already limited) outdoor green spaces.
Entertaining
Even though we have moved away from Ty-Sign, (to Crosskeys) my child still goes to the skate park daily with his friends, and makes use of the grass area to play football and to sit around in the sun.
Events at tlc cafe
Everything
Everything I can
everything I need is here
everything possible!
Everything. Coffee morning, craft club TLC, yoga RCV uk, coffee mornings RCV Uk, Mindfulness also at channel view c c . Street Theatre performance at channel view. Food Bank RCV Uk
Exercise
Exercise
Exercise and toddler classes
Exercise at Rusca Leisure Centre
Exercise class

Exercise class
Exercise class at saint David's hall
Exercise classes
Exercise classes
Exercise classes
Exercise classes
Exercise classes
Exercise classes
Exercise classes
Exercise classes in local community halls
Exercise classes, tots group, room hire.
Exercise playing with great granddaughter events
Family birthdays
Family commitments and work prohibit me taking part in local activities at present, apart from enjoying walking with my dog.
Family days (when they are put on)
Family events, toddler groups
Family occasions, supporting local events and encouraging the use of the few green spaces left for families to use and enjoy.
Family picnic while playing football and the children on their bikes. We also play rounders and have done for many years like my parents did with me. Please save all our kids playing fields
fete, fairs, days out in the park
field playing with my kids café
field with children
Field, park, cafe
Fields
Fields and canals for walking and running
fileds
First aid group
Fitness
Fitness and family activities
Fitness and parenting groups
Fitness class
Fitness classes
Fitness classes
Fitness Classes, baby groups, rainbows, functions
Fitness classes, parties, children's events
Fitness classes, swimming
Fitness classes, use to attend baby classes, have used local venues for parties
Fitness groups
Fitness groups at St davids Centre
Fitness groups, worship, teaching, special interest groups. Food bank...I have been exploring Heath care chaplaincy surgeries in the community.
Flying start
Flying start
Food bank
Food bank advocacy for local vulnerable people
Food banks
football
football
football

Football
Football
Football
Football
Football
Football at tanybryn football club
Football courts
Football local parks Lesure centre
Football, boxing, book exchange, bingojp0
football, rugby,yoga
fun on the field park TLC café
Games, walks, picnics
General spot meeting with friends and family's
Girl guiding
Girl Guiding Rainbows, Brownies and Guides. Seasonsl events eg. Meeting Father Christmas, summer fetes etc. Leisure Centre swimming, exercise classes etc.
Go to local park
Go to tlc
Go to tlc
Grandchildren love the field,park skate park
Grandchildren use the space and i have attended recent public events held there
Grandson plays on fields.
green space to walk my dog
Green space used for little activity and community days.
Growing up in Risca regularly used this field, attended baby group in ty sign clinic, gym member, son uses skate park
Guides, Zumba and birthday parties
Gym
Gym
Gym
Gym
Gym
Gym
Gym
Gym
Gym
Gym ,Cycling,yoga
Gym and activities at the leisure centre
Gym and football
Gym library swimming pool community cafe park s
Gym, swimming, rugby
Gymnastics
Have in the past used TLC cafe youth club and our son was a member of the scouts group at the scout hall
Having recently moved back to my home of risca during a pandemic I'm yet to re join and participate but that field and skate park were used by myself growing up and when walking locally I always pass by.
Help out with food banks and also a member of the Chior
Hoping to start a mothers and baby class next month
Horse riding
Horse riding
I am a Girlguiding leader and participate in Girlguiding events.

I am a local elected member, Trustee / treasurer on the Channel View Community Centre management committee. I have been proactive in building this centre back up in terms of usage and sound management, prior to the pandemic it was fully booked with classes, parties etc as well as being used by the Agape Church Group hence sustainable. With the onset of the pandemic came the Risca CV19 volunteers who have transformed volunteer services in the area to the degree that they have formed a charity (RCV UK) and are currently tenanted at CVCC increasing its usage and sustainability (I declare that I am also a trustee of RCV UK). I am also involved with Risca Senior Citizens association who provide for our seniors.
I am active with RVCUK in Chanel View Community Centre.
I am an ex resident of Risca, I lived there for most of my life. I am a mother of three . my children were educated at Ty-'sign Infants /Juniors and finished their education at Risca Comp .I still visit Risca and use the local businesses, I also met with friends .I feel passionately about Green Space. Our Youngsters need to be outdoors in fresh air to develop and grow , green areas are vital where children can enjoy play safely . .I fully support the residents in their quest to retain this much valued green safe space .To the councillors I bring to your attention ,clean air fresh .is a vital part of children wellbeing as it is with adults .Covid reminder should be the trigger here Leave the green area for the to the residents children and future generations to enjoy .
I am involved in activities in another local large church with plenty of space.
I am involved in church activities in the area which endeavour to support the community and would be interested in being involved in the new community centre
I am not sure if you are allowing children to make comment during this consultation period, but I feel that as they are the ones using the current space, their views would be very beneficial to have especially as not only would they be losing the space, anything new that would be added to the current site would involve costs to them/us and their/my family where as green open space is free.
I attend an existing church in the area and I exercise by cycling and walking on the canal bank. In addition I occasionally cycle up to the cafe at Cwmcarn Scenic Drive
I attend local fetes and community fun days
I attend the local parks.
I attend weight watchers. Mum and baby groups. Fitness classes. Skateboard lessons. And many more
I attended a craft group, teaching knitting and crochet techniques
I attended a small group studying the Bible twice a week
I belong to the leisure centre, I am a local volunteer. My son uses the local parks for his scooter and football.
I do my exercises on the bit of green
I do not participate in any local community facilities in Ty Sign, but as the correspondent for The Open Spaces Society I wish to protect every green space, especially those close to housing.
I don't
i don't attend
I don't believe this is going to benefit the area at all. If anything it is going to make other local businesses lose money. Surely it would be a better suggestion to plow any funding and grants into the current facilities to improve them instead of taking away one of the last large areas of green space left in Ty-Sign that the children use on a daily basis.
I dont but there is plenty of other places this church could be built on so why take away green space that has been there years and kids to play on , stop the backhanders and build it somewhere else
I dont get out often as I'm disabled and have difficulty walking.
I don't live in the area but my choir is hoping to come and do a concert in the hall once it is open.
I don't personally but I know plenty of people who use the existing facilities.
I don't use any of the community centers in Ty Sign.
I don't use them, I use the field

I enjoy a coffee at the local café and take my son to the field
I enjoy local walks and a cuppa at the local cafe
I enjoy playing football on the field
I go to dance classes at fusion.
I go to St John Ambulance Risca. . And I go to the Ty Isaf Baptist Church Risca.
I have been hit by a car on that street Rowan road
I have been involved in running youth clubs, family fun days, small church groups, outdoor worship activities. The Centre @ St David's received permission for change of use last year and is now a recognised community facility, which is over the road from the Spar Field. We have been limited in what activities we can run, due to Covid but from Sept we will be running cooking, arts and crafts, music and games activities.
I have children that use the play area/field as well as other play areas in Risca. We participate in Arts related activities at a number of venues in Risca and members of our family attend church (at existing churches). We also use the facilities at the leisure centre.
I have grandchild who love the park. They also love running around on the field if this goes where am I to take them that's close to home
I have used facilities for public events parties community event social event and countless others
I have used local ones for playschool, baby groups, parties. All different buildings, plenty available.
I have used our current community hall on a weekly basis for total groups, as well as birthday parties, plus fitness classes.
I help run TLC Café, work with the other community groups already in existence in the community. Helped with shopping for people during Covid-19. Will participate in anything I can.
I just attend activities run by the church.
I learned to ride my bike on that field, my kids will too
I like to go to the TLC for a cuppa and a breakfast
I live in the community and have previously taught in the current community centres for 15 years.
I occasionally pop into the TLC for coffee and cake when I am off work
I own a business in Risca, so participate in local fayres, encourage my family into local community events
I partake in a number of meetings in Channel View Hall, St David's Hall and the TLC. My son has been using St David's Hall to attend Flying Start and we use the TLC for local events & for a coffee.
I play football 3-4 times a week
I play football at risca leisure centre.
I pop in to the TLC Cafe, my godchildren use the park and the skate park
I pop into the TLC for a coffee and a chat with friends and had done so for several years before Covid.
I regularly go to socialise and have breakfast at the T L C
I run a dance school myself, we have so many buildings that could be used for the community why do we need another one that's taking away more of our green spaces and it's right next to Holly road flats I would not want to encourage children near this area it is not safe
I support local businesses and sports teams
I support RCV at the channel view community centre, I attend the TLC cafe, I have hired the hall at St David's and my daughter went to nursery there.
I take my child to the park and play ball in the field
I take my son to play on the field, just as I played on the field as a child myself!!
I take part in activities in Oxford House
I take walks along the green and I take my children to the park, the building would be an eye sore and sun block in the summer
I think instead of putting a housing estate where the manor was you should of built this facility now your taking up green space for projects
I use all areas of Risca, the shops, the walls etc

I use other facilities close by including Risca Leisure Centre, Risca Library, Risca Senior Citizens' Hall - all less than a 5-minute drive away.
I use the coffee shop take children to the park
I use the field for walking
I use the green field and park with my grand children
I use the gym and so does my family, i use the library, we use the churches for funerals and wedding.
I use the local park and field with my children and enjoy the use of the local nursery.
I use the local St David's church for childcare. My children use the playground, skate park and fields.
I USE THE PARK I ATTEND FIELD EVENTS WILL NOT BE HAPPY TO LOSE PART OF MY CHILDHOOD TO A NEW BUILDING. THERE ARENPLENTY OF UNOCCUPIED BUILDINGS THAT COULD BE USED
I use the skate park
I use the spar field for exercise for my dogs. I get involved with the litter picks in the area. I use the cafe as well.
I use this field on daily basis for playing with my kids, walking our dog, enjoying of beautiful view of valley.
I used facilities for baby and toddler. Exercise. Hobbies and crafts. Meetings. Parties. Family events
I used the local TLC cafe to help me get back to work
I used to live in Holly Road and know how important the green space is for the children
I volunteer
I volunteer at the TLC and we provide lots of activities for the community
I volunteer at the TLC Café and we have done activities through the holidays for the kids and are having more things coming in September like breakfast club, housing consultations, wood working classes all being funded by council plus many more. Including fun on the field which couldn't happen if the building was there.
I volunteer in the TLC cafe which is greatly benefitting my mental health. When able I try to join in with local events held in the public areas and community buildings
I walk the dog on that field and have picnics on there with the family while using the football and basketball area
I walk. I don't use the community buildings
I work with the local youth and children in the area. The green space is widely used for sports amongst the children. It's a space which in the past has provided a place for fetes, outside play agencies and fairs. Tysign is an under privileged area and this is the only large green space in the whole of the estate.
I'm elderly so not much since COVID as don't feel safe
I'm registered as disabled but I do like to stroll with the dog on the field
I've only recently returned to risca so none
If the tlc shop holds events. Some involvement with the senior citizens club. Local events such as fetes, fares.
In-line skating
Irrelevant we don't need agape or another community hall or another bloody church we have enough!!!
I've attended the winter and summer indoor fetes at the Channel View Community Centre arranged as well as children's birthday parties over the years.
I've hired the hall at St David's. Tlc shop is community hub if needed.
Ju-jitsu and dance classes
Keep fit
Keep fit
Keep fit
Keep fit

Keep fit
Keep fit -coffee morning- slimming- children's activities
Keep fit with Jacey in the senior hall
kids activities at the tlc cafe
Kids activities at the TLC cafe
Kids football
Kids use field for football and general out door games
Kids use the filed so does the dogs we do not need one use empty buildings
Lawn bowls
Leisure centre
Leisure centre
Leisure centre
Leisure centre
Leisure centre
Leisure Centre activities
Leisure centre and volunteer in risca community hall
Leisure centre facilities
Leisure centre facilities
Leisure centre for swimming
Leisure centre, fusion dance, salvation army(brownies) local parks
Leisure Centre, park, skate park, dog walking, cycling
Leisure centre. RCV charity hall
Leisure, Walking in the surrounding beautiful areas and shopping locally.
Libraries, swimming and attend meetings
Library church
Library, parks,
Library, tlc cafe, local cafes/pubs, walking along the canal, mountains, taking children to play football games
Library. Walking
like to pop into the café for a cup of tea
Litter picking
Live and work in the community don't want to see the nice land going
LOADS OF SPORTS, cadets, sunday service
local cafeeverything
Local Church and weekday group for isolated people
Local community days
Local dance school , Risca volunteer group , use the parks and fields for excercise and fun for children
Local fairs, community days, I would also consider the use of community settings such as st David's hall in the future for birthday parties for my children which is opposite the spar field and already offers a great space
Local fitness classes.
Local fun days on the proposed green space.
Local leisure centre
Local scouts
Local shops and I use the TLC a few times a week.
Local sports clubs
Local theatre company, Rainbows&Brownies&Guides meetings, Scouting meetings, Fitsteps classes, Weightwatchers classes.
Local walking groups
Lots

Lots including the recent fun day on the fields which my ten year old daughter sang at!
Lots of different activities
Lots of different things
Lots provided by TLC RCVUK and St Davids
Love the skate and park in tysign. Me and my 7 year old spend most days up there!
maes filed
Martial arts
Martial arts
Meeting with friends
Meetings for British Legion, in various local buildings, TLC, scouts, youth clubs
Meetings, art class, cinema evenings, talks
Member of Moriah Baptist Church
Member of the leisure centre (gym, swimming etc)
Member of the U3A. Also volunteer for RCV19 also Salvation Army, Litter picker.
Mental health support groups
Messy church
Most
most around
Mostly Childrens Parties.
Mother & baby groups
Mother and baby
Mother and baby
Mother and baby group
Mother and baby when children were young
Mother and toddler group
Mother and Toddler group, choir rehearsals ,library activities,Slimming World meetings.
Mother and toddler group, community fun days
Mother and toddler groups, fetes and fitness
Mother and toddlers
Mothers and toddlers
Mother's and toddlers groups, chair yoga,
Mountain Biking
Much of the community facilities have not yet open, but when they do I will continue to attend church at st David's, as well as the proposed music group, art group and help volunteer at groups run by the RCV group, st David's and the TLC
Much of the green space for leisure, dog walking etc.
Multiple
Mum and toddler group activities, social services, volunteering, self help groups, study sessions and Christian worship activities.
My children attended Playgroup at St David's Church Hall
My children do scouts, and I attend classes at channel view community hall
My children play at this facility and it would be a huge shame to spoil that with an unnecessary building, plus during the summer fundraising events take place on the field, I have grown up in Risca and the field has always been a huge part of our community.
My children play on that field
My children play on field
My children play on this field all the time. They have attended fetes, and met children from the area, establishing new friendships.
My children use the field and skate park.
My children use the park at every opportunity they get and they love it there.

None at the moment, have been ill and housebound
None at the moment.
None ATM as there isn't anywhere for a family of a 10 year old to go. If they did a youth center it would be fantastic
None because I'm disabled and access in Caerphilly is a joke. I'm housebound without someone to help because you can't even put drop kerbs in let alone anything substantial.
None because no one goes to them so it would be a waste of a nice playing field for kids and a nice field for people to walk their dogs
None but in the past when our children were younger we used the park a lot and played games on the green
NONE BUT LOTS OF OTHERS DO
None cos carphilly councils don't care about anything ere just lining there own pocket
None due to covid
None due to health reasons
none except use of the field and park
None I work full time
None I'm too busy working
none past member risca choir, had to retire from choir due to ill health
None personally as I work around the clock but I grew up in ty sign and the people of the community are more than capable of pulling each other together
None personally but my wife volunteers at Channel View Community Centre for RCVUK
None personally, but St Davids hall is adjacent to the current site, plus there is the leisure centre plus the community hall in Channel View.
None really
None, but I have children that use the playgrounds. And I used to use the gym
None.
None.
None. Only those at leisure centre and most of those have stopped because of covid
None. We currently have very limited community facilities and activities.
None: I think there is a lack of such facilities in Ty Sign.
nope
Nor relevant
Normally attend when invited to private parties
Not many at present, as I look after my grandchildren, but I was started the Beaver Colony for 5th Risca Scout Group in 1992, until I retired nine years ago, though stayed on its Committee for several years afterwards. Until COVID, I took my granddaughters to Rhyme Time in Risca library
Not so much me but my children use the park and green space we have
Not sure why you need this info. But I go to gym at leisure centre and when children were younger we used the scouts hut and also at Mary's church hall pre covid for yoga. Also used ty sign club for dance classes. All these places still available.
Nothing
Nothing
Nothing because there are no weekend activities. And I work Monday to Friday in Cardiff.
Nothing I work 60+ hours a week but use this space for walking my dog when I work from home and my dog walker uses it to walk them.
Nothing that interesting to me as I work full time.
now that the gym is available at the LC that will be my main focus
Nursery skate park
nursery skate park
Oap days out at the field kids partys kids skatepark my kids play there everyday kids learn to ride bikes there freespace for children and parents to play space to walk dogs enough space for dogs to be walked and kids play separately and freely

Old age peoples centre
On the board of Caerphilly Business Club.
Parent and toddler
Parent and Toddler groups
Parent network, bingo, pole fit, gardening club
parent network, dancing, book club, exercise class, food bank, dvd exchange, gardening club, bingo, playgroup, church services, chrishingle, kids club, morning coffee club
Parent/toddler groups at Salvation Army, Moriah church, Bethany chapel, scout club, all within Risca.
Park
Park
Park activities with children
Park and green space in area
Park facilities
park skate park
park skate park
park walks
park with child and dogs
park with children
Park, children's skate park and green space
Park, fields, for walking and grandchildren.
Park, football, activities on green with my children
Parks with grandchildren 9
Parks, library, leisure centre, local walks.
Parks, local community halls
Parks, walks, community picnics
Parties
Parties and charity events
Parties and community gatherings
Parties, events, charity fundraisers, get togethers
Parties, parenting groups, food bank, dance classes, playgroup, coffee morning
Pat mills
Pensioners club
Pension's hall
play 5 a side
Play area for children and dog walking, green space
Play football with my grandson.
Play with my grandchildren
Playground and playing on field with grandson
Playground and playing on the green with my children
Playgroup
playgroup
Playgroup
Playgroup. Sliming
Playgroups, sports grouuos, messy play.
Playing with the kids
Pole dancing
Pop in for coffee now and again when I have spare time to interact with the local members of society.
Prayer group
Pre Covid

Pre pandemic I attended the council engagement breakfasts at the TLC cafe
Previously accessed youth groups, dance classes in hall directly opposite this area and played on field
Previously scouts leader
Primary school
Private information
Quick fit
Quite a few with community and local tlc shop as run local playgroup.
RCUK volunteer
RCv
RCV COFFEE MORNING ON WEDNESDAY
Rcv Uk , tlc, cab, library when open
Regular walks
Residents association
retired
Ride my horse at the skate park and do tricks on it
Risca Choir
Risca Community Group
Risca East Community Council met at St David's church every month before Covid and we will be again come the autumn. We use the hall at Christmas for a community get together after the turning on of the Christmas tree and street lights for refreshments and a visit by Father Christmas, which is always well attended. We also held a councillors' surgery on Saturday mornings once a month. Risca East Labour Party meetings were also held at St David's before Covid.
Risca gym
Risca leisure centre, swimming
Risca Leisure Centre.
Risca mini and junior rugby, all stars dynamos crickets, TLC family craft days ETC.
Risca rfc, local slimming, local dance classes
Risca Rugby, Risca leisure centre gym and pool.
Risca senior citizen
Risca senior citizens club
Risca Skate Park and play area.
Roller hockey
Roller hockey
Rugby
Rugby
Rugby
Rugby
Rugby
Rugby
Rugby
Rugby
Rugby at risca rugby club
Rugby player for Risca rfc
Running
Running
Running
Running club
Running gym
Scouting
Scouts

Scouts
Scouts and Guiding meetings, Weight watchers, local theatre.
Senior citizen club
Senior citizen club
Senior citizens club, risca cv volunteers , crafts, coffee mornings, social groups
Seniors citizens club - TCL- playground and skate park
Seniors Club
Singing
Singing
Skate boarding
Skate park
Skate park
Skate park
Skate park , walking
Skate park , walking , football court , park
skate park ,use to walk the dog, group activities, TLC
Skate park football basket ball - walk the dog a lot on this field while kids play on skate park or basket ball or play football on the field
Skate park for the kids. Play park. Any day ours organised
skate park general leisure, coffee mornings TLC tea ,breakfast club
Skate park with the grandkids
Skate park, kiting on the green, biking, dog walking
Skateboard park and use of playing field on this site
Skateboarding
skateboarding with grand kids.
Skateboarding. Personally I wouldn't be happy if this took place as it'll bring different demographics to an already crowded area
skatepark
Skatepark
Skatepark bmx sessions, running on the fields that would be lost.
skatepark park
Skatepark park football
Slimming class
Slimming classes
Slimming World
Slimming World in Risca
Slimming World, Aikido
Slimming world, kids football
Slimming World, occasional use of leisure centre
Slimming world, tots
Social
Social events
Social networking, community and youth group meetings, music and physical activities
Socialising
sometimes I am known too
Son participates in after school clubs, birthday party hired halls
Son uses skate park regularly
Soon to be a new mum so baby groups.
Sport center community cafe spar
Sport, Coffee Mornings, Worship Services
Sport, music, group therapy, massage, play groups, walking etc etc

Sport.
Sports
Sports
Sports at risca leisure centre
Sports at Risca Leisure Centre.
Sports, fitness,
Sports, meetings, baby events, parties,
Squash
St Davids Church Hall fitness class
St David's for playgroup, dance sessions
st davids hall pole fit classes
St Davies hall
Stunt scooter at tysign skate park
Support charity events for Cancer Research
Support group
Swimming
Swimming
Swimming
Swimming
Swimming
Swimming
Swimming
Swimming
Swimming
Swimming
Swimming and keep fit.
swimming for my children and football for my son
Swimming n/a
Swimming skating football skateboarding rugby gym tennis bowls cricket
Swimming walking
Swimming, charity events
t l c cafe
t l c meet for food and drinks
Tae kwon do swimming
Tae Kwondo at St David's Church
Taekwondo in the local halls
Take my kids to both the park and the skate park
Take my son and daughter on to the green to play football and have a picnic
Take my son to rugby and football
Take my son to the park, make use of the fields to take him and my dog for family walks
take the children to the park they play football on the field I use the coffe shop
Taking my grandchildren to play in the area
Taking my grandson to the field and skate park.
Teaching music
Tennis
The Canal.
The Park
The park, skate park, local halls for parties ect.. could do with public toilets back by shops mind
The skate park
There is loads
There's not a lot of green space left and lots of children play there

There's been a pandemic during the I've lived here. So very little thus far. May make use of the leisure centre and bowling green soon.
This and that.... Which has nothing to do with this!
This is irrelevant
Tic to meet friends for food and drinks st David, field with grand child my grandchild ill health
Time spent outside with my family
Tin on a Wall
tin on the walk litter picking
Tlc
TLC
TLC cafe
Tlc Cafe
TLC cafe
TLC cafe
TLC cafe and Channel View community hall
Tlc cafe for food and drink and community groups
Tlc cafe is off limits because the lady running it (who i believe is a Councillor, or was before being thrown out of Labour), is all over Facebook spouting vitriol and harassing people who support the new building. The other councilor (of some description runs St davids) others are trustees or on committees for Channel View and some of the activities in them So how can anyone who supports this project feel comfortable in any of these places? Why can't we have a new, well run facility?
tlc café park and feild
TLC cafe,
TIC cafe, fun days on the field, risca park events and markets. Xmas markets. Xmas choir and singing events at waunfawr park.
Tlc cafe, sports at Risca leisure centre
Tlc shop
Tlc shop
Tlc shop for coffee and food
TLC, taking my granddaughters to the Parks
Toddler groups
Toddler Groups
Toddler groups and social events for friends and family.
Toddler groups, private hire parties and fitness classes pre-covid
Toddlers
Toddlers at channel View Community Centre
Torsion channel view community hall
Tots, dancing.
Tredegar Park, Risca.
Ty sign Methodist church
Ty Sign Tots group Monday Am term time
Ty sign tots, Agape community church
Ty sign tots, channel view community centre
Ty-Sign Tots
Tysign tots toddler group
Uniform recycling scheme
Use a child then my children and now we use the green field with our grandchildren
Use of Leisure Centre (pre.covid)
Use of local green spaces for dog walks and sports practice
Use of local leisure centre and pubs that are available for hire, use of green spaces for walks and playing.

Use of local out door facilities
Use of parks and canal area
Use of skate park, use of parks,
Use of the parks for my daughters
Use of the swimming pools . Library and TLC . My children use the skate park MUGA regularly
Use play area with grandchildren and meet friends
Use skate park and park and play on the green
Use the cafe for breakfast
use the field to walk when I get home
Use the fields and canals
Use the local parks to take my grandchildren
Use the park and field with my children for sports and play.
Use the park and we walk our dog on the field
Use the park to walk the dog
Use the parks
Use the parks with my children
Use the skateboard park and field a lot with my son as nice quiet area for my son to play safely
use the tlc cafe and St Davids Church
use TLC children play ground walk on the green
Used to go to book club at a funeral parlour before covid.
Used to use Saint David's now don't go far 78 years old mobility problems.
Using local facilities that are already in place.
using local shops pubs and restaurants.
using the green area to socialise and to play with and walk the dog
Various
Various
Very little as only moved here recently.
Visit the hall two or three times a year for meetings.
Volenteer groups and help with general public enquiries
Voluntary
Volunteer
Volunteer
Volunteer at local CVCC
Volunteer at Risca RFC
Volunteer for RCV19
Volunteer RCV19
Volunteering at a local Foodbank
Volunteering with RCV UK at Channel View Community Hall....Risca Leisure Centre..badminton/gym, Risca Library. Local football.
Volunteering within the community, sports and leisure activities, walking
Voting
Walk
Walk
Walk dog and children on the field, play football and picnic with grandchildren
walk my dog on the field as he's not allowed anywhere else from the end of this week as the council can't be bothered to set up appropriate walking/play areas for dogs
walk on field with dog use café weekly
walk the dog
Walking
Walking
Walking

Walking
Walking
Walking
Walking
Walking
Walking
Walking , keep fit , Swimming
Walking and taking my nieces and nephews to the green and park to play
Walking around the local area
Walking in our green space with grandchildren and dog
Walking taking granddaughter for a run around the spar field viewing nature and wildlife
walking up the field
Walking with the dog . Taking my granddaughter on the playing field and park
Walking, cycling, keeping fit etc
Walking, leisure centre.
Walking, shopping,
Walking, taking great grandchildren for walks. Hiring hall. For birthdays
Walking, using local park facilities
Walking. Playing football with my grandson.
Walking/cycling at Monmouthshire/Brecon canal
Walking/playing at all parks within Risca/Crosskeys and within green spaces at holly rd field, Fernlea field.
Warriors children's church group at St. John ambulance hall
We ahve friends in the area and use the park and green space alot with the children
We are starting up as soon as able breakfast club, Oxford House, woodworking club, bingo, fare share, afternoon teas, luncheon club, seated yoga, craft days, community fridge.We would also like to start youth club for up to 12 Yr olds
We attend any clubs an my daughter goes to this field with friends
We had a CAP job club supporting local people back into work
We have run pre Covid several courses to help families and individuals overcome various difficulties including lifestyle issues, budgeting and debt counselling.
We have St David's opposite the green that more than cover all community facilities that are required .
We hold surgeries in Chanel View Community Centre.
we offer a number of groups and activities as well as a cafe
We use St Davids Church hall (opposite the field) for birthday parties ... my children went to toddlers there as well ... my children use the skate park and also play football/rugby on the field with there cousins who live directly opposite (High Trees & Fairview Avenue) ... Channel View community hall we attend to donate/assist the RCV
We use the park and its facilities. We use the cafe and have attended baby groups and use the canal.
We use the playground - play area
We use the playing field of Snowdon Close which is nearby with our grandchildren as well as the little park by the skate park and use the 'old Spar shop' for odds and ends we need to buy.
We use this field regularly. It's on our walk home from school and the park and field is always full of children playing
We use this land daily with children after school. The playground is very old and a while ago we were promised a new one, but instead if play area, you are planning a massive building?!
We use this space daily for walking the dog and allowing the children a safe space to use for playing games, having picnics, etc.
We use tot groups, library, leisure centre, parks, canal.
We we also using Community facilities on a Wednesday & Thursday evening

Wednesday craft group in TLC before Covid run by Regeneration & I-Make before Covid stopped it
weekly family activities, too many to mention.
Weekly Sunday Morning Worship Service
Wellbeing, coffee mornings, street theatre food bank
What activities do you currently participate in at local community facilities?
When my children were younger I did then so feel for those today
When they were allowed family get togethers, childrens parties, after swim coffee, directors meeting for a local management group, etc
Wlalking in Cross Keys Park
Worship. Fitness groups. Special interest groups e.g. gardening, local history.
X
Yea the park and field for outdoor activities.
Yoga
Yoga and Swimming
Yoga at the CVCC
Yoga local walks
yoga outdoor cinema scouts
Yoga, swimming
Yoga, volunteering
Youth and children's groups, toddler groups, cafe
Youth club, football,
Youth events
Zumba
Zumba
Zumba

Annex 4: Activities that respondents would like to participate in

3 G
3G football
A better local gym
A little kick about on our Spar field I'm happy with, with my children and Grand children
A lot of the bigger events or exercise classes, independent to the leisure centre, all seem to happen on the 'flat' of Risca. It'd be nice to have somewhere centrally in tysign these could happen.
A new playground
A pub would be good as 'The Manor ' was demolished years ago, and an improved playground would be beneficial as the present one is much too small. Also, having walked many miles locally during the lockdown, we noticed that there aren't many places to take a rest, so some more seating would be good, especially for the elderly who no doubt, would walk to exercise more, if they knew they could sit for a little while to catch their breath.
A running club would be good
A splash zone for the children instead extended the area of the park to include this would be a brilliant idea. At the moment I have to take my children all the way Cyfartfa Castle in Merthyr tyfil not only does it cost alot on the bus to get there i would rather be putting my money in my own community to improve it.
Absolutely not I enjoy my visits to Risca
activities are available
activities are covered within current community centres/gym and surrounding areas
Activities for the over 70's"
Activities that involve looking after animals.
Afternoon tea dances, Yoga or Tai-chi classes, Knit and natter (for both sexes), Teach welsh classes, Table tennis, discussion classes and much more.
All activities already covered
All activities already covered.
all activities are available
All activities are fully available in Ty-Sign at the leisure Centre, St David's hall and TLC .
All activities are ready available
All activities I am interested in are readily available for me to do
All are ready available
all are ready available
all are widely available to me and my family
all my activities are on the field skate park TLC
all of available
Already a plethora of venues available
already lots of stuff already available
Also Pilates - and meditation "
An improvement to the park would be much better.
Another centre is not needed, would be unsafe for children to go to play taking away the green that many children play in each day would greate more traffic making it unsafe and would never use the the hall
Any activity that keeps anti social behaviour off the street & helps the young with their self esteem
Anything for older people, Welsh language teaching
Anything mountain bike related to increase safety for the riders, due to the many local trails.
Archery, community sports days, kayaking
ART EXHIBITIONS

As more of us are working from home and, as a software developer with 25 year experience and my own business, I would use shared working spaces much more, such as Welsh ICE in Caerphilly. Something local like this (maybe in the old Lexxon building in Risca) would be hugely beneficial.
Astro/alternative football court. Exercise equipment. Improved children's park equipment. Take some ideas from Rogerstone Ty Ddu park area.
Basic exercises, keep fit for older persons
Better football pitch or more outside activities.. or out side gym
Better skate park
Bike jumps
Bingo. craft club. book night. Some other classes.
bmx park
Book club
Book club
book club"
Boxing
Boxing, Sugar Craft
cafe
Cafe
Can't think of any
Can't think of any but it would be nice to have a meeting space that isn't in a pub.
Children need play areas. We are already fighting a childhood obesity problem
chwarae pet droed ar y cae (play football on the field)
cinema
Community Rail Partnership with TfW
Concerts
Continue to walk and my family to use the skateboard park and children's playground in safety
Covered area for teenagers to feel able to meet friends in safely in the winter and rvenings
Craft and trade fairs for local businesses or a local traders market on a regular basis.
Craft classes.
Craft groups and sports for beginners
Current community spaces are underutilized and there are no reasons why any new activities couldn't be organized in existing spaces.
Dance classes for modern dancing. eg. Quickstep, jive etc
debt relief, listening service, safe children's indoor play, attractive/smart conference facilities for team meetings
Dedicated dog park enclosed would be great
Definitely not a church with drug rehabilitation in to accommodate the idiots of holly road!
Development of other out side attraction so children keep physical fit, tennis courts, min golf, net ball, basket ball children's cricket..."
Dogs and children use the green space.
Dont know
Education of lgbt+ rights
Enough green space has been taken from the residents and children of Ty-sign"
Evening classes for working parents, coffee afternoons for working parents youth centers for the kids
Everything I would like to do is readily available locally
Everything I'd like to do is already readily available for me
Everything is already available
Everything is already covered in the area and surrounding areas
Everything is provided here already
Everything required is covered across the facilities we already have in place.

Exercise class
Exercise classes?
Exercise group for people with heart conditions and social gatherings with people with disability
Facilities for mental health welfare and activities etc for senior citizens. Activities for youngsters /teenagers.
Family parties, activities for OAPs, community gardening.
Fitness classes, hire for parties. Activities for the children. Youth club maybe.
Folk music club
Foodbank
football courts
For this madness to stop. I walk along the field. Its all flat and suitable for me an oap. Keep it as it is, and dont dig over half of it up for a Church and fenced garden and car park to be built for a few people who do not live in Risca, let alone up on Ty Sign
gardening club, book club, BSL lessons, keep fit (not yoga or pilates). Events that are inclusive. A place I can walk into without feeling alone.
Gardening club, Photography club, The issue for me is that the current facilities are not always available, big enough or smart enough.
Gardening, meet friends, make friends, parties, cooking for and with community. A place id not be ashamed to walk into. I wouldn't need to use a car because the new hall and the stuff on the field would be easier to access on foot.
Green space
Group activities that involve isolated or lonely seniors.
Gymnastics and other activities for children with additional needs
Have more mental health support for everyone
Have you tried to book a fflecsi bus from town to Ruskin avenue?
Helping to support wildlife in South wales
I
I also run a local business which will suffer from the loss of the green space
I am 79 and have to travel by bus to do anything,
I am happy with what is already available in my community.
I AM HAPPY WITH WHAT IS AVAIBLE
I am of a generation that can utilise the facilities we currently have to the best of my ability
I and my other colleagues have participated in planting bee loving flowers with more to come. Have arranged hopefully for new trees to be planted after those that are needing to be felled have gone. A community garden in the estate maybe work with the schools. Bringing lots of ideas together.
I believe Ty-Sign and Risca have everything the local community needs for the residents.
I can find all I need here in tysign
I do love tennis
I don't think there are enough activity places for children because we have to travel for these such as newport or cardiff. Maybe if it is lottery funded you should focus on family based ideas and not added buildings that are not needed! You could keep prices down so the facilities are used more often aswel.
I feel youth activities need to be further encouraged. I would also like to see better quality natural play parks, community gardens and facilities that have better disabled access and accessible play
I think there should be more green space and activities for the children to be outside
I would like to see a secure area where dogs are allowed off the lead.
I would like to see more done with the skate park and do more on the the spar field.
I would suggest a community choir be started in the area.
I would visit the facility, particularly if there were a church community there.
If you take the field away form local children they will lose the field to play and learn to ride their bikes they would lose all the play opportunities through play and learning in a safe controlled

environment for something no needed. It will be terrible and ever so sad. I grew up on the end house right by the field and path at my grandparents house. I have fond amazing memories and still do and would like to continue to do so. We Play football with the children and for them to have room to freely play safely and sitting down with to have picnics. My children learned to ride a bike on that field and I did and my brother and cousins did when we were kids. This is the future of all local children to play safely and have plenty of natural field to be children and play freely and grow and learn through play. If you take this away the children will have just have tarmac and future children. It's very sad so please save our childrens playing field.
In my opinion, only the introduction of very bespoke and focussed classes/activities may be further desired. However there are plenty of community spaces and private venues available to hire already existing in the very near area. "
Increase outdoor activities
Indoor bowls
Indoor rock climbing. Bigger skate facilities.
Indoor skate park for the community at the now disused timber yard
Irrelevant
It takes me 35 mins to travel from Cardiff on the x30. And one journey on the fflecsi took 43 mins. After waiting 30 mins in the bus station. Yes I have tried to download the app. "
It would've nice to have a coffee morning and play day for young parents with children before school age.
it's all covered already. i'd like to see more planned activities on the green space though.
It's not a question of activities not being available, it's not having enough room in the venues that are available
Just need current ones to be accessible to Deaf people.
Keep the green for more football activities and things for children as its started to be
Language classes
Learn to ride a bike classes for younger children
LGBT and allies support group and church group. Secular youth club for local young people. Cooking classes, during the day for parents to learn how to cook while children are in school.
LGBT church group, secular youth club
Loads. And lots for the kids too. Netball, youth clubs, arts classes, practical classes like pottery, sewing etc, gardening groups. The list is endless. No one needs yet another building to take over green space when there are plenty of other options.
local events
local physical activate centre
Lots, but it's got nothing to do with this!
Lunch clubs
Many but tlc are doing a lot more now
Many years ago we had a travelling fair. The community need something for the children and adults alike
mase feil
Maybe a youth club at one of the locations we have.
Maybe lighting around park walks
Mindfulness meetings,
More activities for elderly people, community allotment with raised beds especially in a green space
More activities for over 60 s
More activities for the elderly & lonely on Ty-Sign.
More activities for young people
More activities for younger kids especially on winter.
More activities on green spaces
More areas for children to associate with and grow at. More youth centres

More community classes
More events
more fetes
more interest in funding
More outdoor activities like tennis / cricket clubs for young children
More outside activities for children.
More scil gathrrings
More social clubs for children
more thing for kids to do
More toddler clubs
More youth clubs and activities not take away green spaces
More youth clubs for kids
More youth clubs. Summer of fun children's commissioner was very low/not much offered in Caerphilly in comparison to other LAs. Local splash park. One in Caerphilly but not on our side
Mother and toddler
Mountain Boarding
No - Risca has a huge range of activities going on
No all covered
No and if I did I would travel to where it was necessary
No and if there are, I can use current facilities to start it
No as there are new activities starting up now that the restrictions are being lifted
No because I feel the other buildings available are able to offer the same and there is even a derilict pub that could be utilised as a youth hall or community hall rather than taking away so much of the green space.
No especially not that arranged by a very rich church and trying to get funding from all the different charities stated. And on the leaflet does not say anything about a church.
No I am very busy with working in the community.
no knock down the flats please tho
No lots on offer already.
No none whatsoever.
No not really, lots of community buildings and not much in way of green spaces
No other community centre needed there's The church hall TLC scout hut channel view hall to name but a few halls which can and are used for the community
No save the field
No thank you
no the field is all we need
No the local established places already provide activities that are required.
No the local ones already provide for community
No there is already enough places covering the activies in ty sign green space for children to play and safety of our children is my main priority
no there is plenty
No we have a wide range of activities available in risca to suit all ages
No we have a wide variety already here in tysign
No we have all we want
NO WE HAVE PLENTY
No, all activities are offered in the ty sign and risca area.
No, lots more I like to do but don't have time
No, there are plenty of activities readily available.
No, we already have facilities in the area for the majority of my interests.
No, we are completely catered for in the current community halls
No.

No. I believe that between the exercise classes at the leisure centre, choir which takes place in the town centre, Risca volunteers organising coffee mornings and meet ups in community spaces that already exist, that everything is covered.
None at all
None due to covid
None that I've seen advertised by Agape Church/Big House.
None, plenty already available for a range of ages and abilities.
None.
Nope
nope
nope
Not at momeny
Not at present
Not at present
Not at present
Not more activities but more seating around our existing parks and green spaces. Our children love to play outside in a safe environment. It is good for their physical and mental health. To be able to sit down to supervise them would be fantastic!
Not on this field. The space needs to be kept as it is.
Not really
Not really no
Not right now
Not sure
Not that I can think of
Not that I can think of for my generation
NOT this church and not on this parcel of already used land by the community for the youth
Nothing due to my age, but my grandchildren enjoy playing on the green knowing its safe
oap group it would be easy to get to
Open green space
Open air church rallies.
Open swimming pool as prior to Covid 19.
Organised local historic walks, Nordic walking
Our children deserve to be safe and to develop normally
Outdoor swimming you have already knocked that down
Outdoor play areas for children, football pitches
Outdoor swimming facilities "
Over 60's fitness not in a gym setting
Paintball to be honest
Parties"
Photography, Indoor bowls, Astronomy.
Picnic area
Pilates
Play school
plenty but none included a hall, its more for green spaces activities
Pottery painting?
Pottery. Gardening (not by getting rid of a green space and adding a tiny garden). Guerilla gardening perhaps
Provide free services for people that are struggling with various issues such as depression, loneliness, age related isolation, computer literacy training etc.
Provide in current established community hubs
Public house, spa and sauna

Public toilets for use by park and skate park and a pub x
pump track.
Regular family events
Reopen the outdoor pool by the rugby field.
risca offers enough already would enjoy a dog or hoarse show
Rounders
Running club
Running track
Secure dog fields for off lead play - to hire
See children enjoying the parks and green spaces which are rapidly disapoearing
Skate park
slimming world
Slimming world, gardening club, lifeskills courses, adult education, knitting club, walking groups. BSL community group. Cookery classes. A meeting space close to open space. Cheaper fitness classes (can't afford the leisure centre). Hire-able meeting space (as I now work remotely, I'd hire a private space to meet and work with colleagues). These things would be within walking distance if the hall was built. I'd like to run befriending groups.
Snooker/Pool hall
Something for teenagers
summer fates fire work display
support for young parents, the needy, opportunities for lonely/struggling people to meet in community, youth/children's activities
Supporting the need for green space
Tao Kwan do "
Tennis"
The local area has more than enough activities for me and my family to participate in.
The majority are covered at present. As Covid-19 still has an impact on things at present.
The only things I wish to do at present are unavailable due to COVID.
There are a Good variety of activities are available .
There are enough facilities in our area without adding to it please keep the green land
There are many things to do in Risca.
There are plenty already
There are plenty of activities available locally this hall is NOT required
There is a few buildings that can be used for any activities in the area why take the children play area
There is a local cafe that I have used when I had a day off that had lush breakfasts and info that I needed
There is not a decent 3G all weather facility large enough for football/rugby in Risca..also not enough facilities for disabled sports people.
There should be more activities for the children
Think of the children and the community not of your pockets
This doesn't matter we don't need another bloody building
Trampolining,
Ty Sign and Risca East community hubs respond to local needs. If residents identify a need, such as the RCV UK initiative, needs are met. Risca Skate Park on the Spar Field is another example. It took several years of fund raising but it's now up and running and used by young and older children."
Ty sign would not b the same without the spar field
unsure
unsure at the moment
Volunteer tutoring for school aged children in the area would be lovely to see"
Walk across the canal

Walking in ty sign area but foot paths are overgrown with bushes
walking up the green
Water play would be nice, something like a splash park.
We already have the facilities for Christian worship. So no .
We are looking into starting up the community garden and nature walk for wellbeing in the community. Also starting back up the skate club and having workshops to show how to maintain and repair their boards or scooters
We have a good rang of activities already available to us through Risca LC and the surrounding Community Groups.
We have all we need.
We have everything we need
We have everything we need... what we also need is GREEN space
We'll definitely NOT drug rehabilitation or clinics which is what they do
What is available is sufficient
woodworking classes
Would be good to have some more multipurpose 3G pitches for football, rugby etc. Something that kids could make use of.
Would be nice to see family events
Would just like the existing activities to take place in a building that is fit for purpose.
Would like to hot desk, or run business meetings from a facility on Ty Sign.
would like to see a dog park
Would like to use community hall for my dance school to hold lessons and concerts
Would love the fair back on spar field
Yes
Yes
Yes a community 5k run space
YES A LUNCHEON CLUB,
Yes, weekend yoga and dance lessons.
Yes, would like to see open space used for outdoor painting groups, photography of nature. Also where activities that were once held indoors i.e. Risca Community Hall (old Risca library building) if gazebo's were erected on large green space outdoor fitness and wellness classes could be held.
Youth club
Youth club /activities would benefit the young people in the area
youth club in ty-sign
Youth clubs
Youth services, charities, a place for proffessionals to meet with each other and a safe place to meet with service users.

Annex 5 Additional Correspondence

From: Cllr. Leonard, Arianna

Sent: 19 September 2021 14:29

To: Hartshorn, Robert

Subject: Proposed new Community Centre - Ty Sign

Hi Rob,

As its the last day of the consultation I just wanted to email regarding my views on the Proposed New Community Hall in Ty Sign.

As you are probably aware by now there is a online petition circulating with over 900 signatures from our community opposing the Hall and a physical copy with a few hundred signatures on. Everyone I have spoken to in our ward regarding the new hall is against the proposal bar one or two individuals, that were connected to the hall in some way.

My main personal concern regarding the hall being build is the detrimental effect it will have on the surrounding halls. Especially since Channel View Hall is now being kept open with significant investment coming from CCBC & other sources.

Channel View, TLC & St David's are all in very close proximity to the proposed site with TLC & St David's literally on the other side of the field. The hall is going negatively impact the buildings & take buisness away.

I have also had many complaints regarding how the hall is going to take away the last well used green space in Ty Sign. As a Councillor for CCBC I know how proud we are of the work we are doing to protect our green spaces & trees.

I just wanted to pass on my concerns & make you aware of my views on this proposal before the deadline for the consultation.

Thanks for your time,

Arianna

Robert Hartshorn
Head of Public Protection, Community & Leisure Services
Caerphilly County Borough Council

17/09/2021

Re: The proposed building on the Spar Field, Ty Sign

Dear Robert Hartshorn

I am writing in my capacity as a member of St David's Methodist Church, as a Mission Developer as employed by the Methodist Church to manage the Centre @ St David's and as a local resident.

I wish to make known my opposition to the proposed building of the community centre on the Spar field.

I feel this building is not needed and would result in the loss of green space which is valuable to the community.

I was previously a trustee of Agape and one of the church leaders until I stepped down in 2017. At this time there was some concern that the Channel View Community Centre would close and Agape were concerned about where they should meet if that should happen. It was then that the idea of building a community centre was first proposed. I was not in favour of this, especially when the Spar field was first mentioned as a possible site. Both myself and my wife expressed our concern that the community would not support this but when we raised our views we were shouted down.

Since joining St David's Methodist Church, Agape have never approached us to discuss whether there was an option of sharing the space. The building is a shared church and, prior to lockdown, the Church in Wales also used to hold services there, so the idea of several churches using the building is not a new one. However, even though we have expressed our wish to enter into conversation about this, Agape have refused to take us up on the offer.

Since Agape first raised the idea of a new centre, there have been significant changes at St David's. The manse next door has been redesignated as a community resource and change of use has been approved by the council. This has been named the Centre @ St David's and contains an office, kitchen, two large meeting rooms, a food bank, a prayer/relaxation/meditation room and two further rooms which can be used flexibly. We also have a community garden which is currently being used by the playgroup. St David's also has a large hall which received funding from the council around 10 years ago and at that point was acknowledged as being a community resource. This has been used for running a youth club and family fun days. It also houses the playgroup during the week mornings but is also available for hire in the evenings and weekends. We currently have two regular users in the evenings but there are still slots available on other nights.

We have also partnered with the RCV UK group to run a bike hub which is being run from the garage at the Centre @ St David's. We are also in talks to run a toddler group in the church area itself and a Best Feeding group which is a breast and bottle feeding group in the centre. We also plan to start to run cookery, arts & craft and music sessions in the coming weeks as well as games and film nights.

Agape have continued to put out misleading statements on Facebook stating that the new hall will be bigger than any current facility, this isn't true; according to the plans submitted, the hall at St David's is larger. They have also said that they have worked in partnership with other local services including St David's, this isn't true. Agape have hired the hall in years gone by but haven't used it for well over 5 years. They have also said that they have explored other options to building a new hall, they haven't.

As a full and active part of the community, St David's and the Centre @ St David's have worked in partnership with the TLC Community Café and the RCV UK group. The same cannot be said for Agape who were suspiciously absent throughout the pandemic.

Finally, as the future of the Channel View Community Hall is now secured, I cannot see why they wish to pursue this course of action. My belief is that they want to have a 'beacon on the hill' or a 'shining light in the darkness of Ty Sign'. I feel that it is this misguided approach which is driving their actions and not a genuine concern for the community.

Please feel free to contact me if you want to discuss any of these issues further.

Yours sincerely,

Tim Crahart

Tim Crahart
Mission Developer
The Centre @ St David's
Newport & Lower Wye Circuit


The Methodist Church

Emails from Dawn Derraven, Risca Covid 19 Volunteers dated 12th & 19th September 2021

Subject: Letter of concern / Complaint regarding Agape Church and the proposed development of a community hall

From: Dawn Derraven <dawn@rcvuk.org>

Sent: 19 September 2021 18:48

To: Hartshorn, Robert <hartsr@caerphilly.gov.uk>

Cc: Tara Holloway <tara@rcvuk.org>

Subject: RE: Letter of concern / Complaint regarding Agape Church and the proposed development of a community hall

Hi Rob

Hope you're keeping well?

Just to clarify, I was referring to the physical petition which Jane Burris has scanned and emailed to you already. I believe you received this safely?

There are 2 online petitions, one of which is below, the other was a quick and simple Facebook poll.

In a recent Facebook Poll we found that:

- 255 people DO NOT want a community centre.
- 13 people DO want a community centre of these, of these 5 people live outside of the area of benefit. 4 of the 13 respondents are members of the Agape Church.
- 172 people DID NOT receive any leaflets from Agape.
- 15 people in our poll live directly overlooking the Spar Field and of those 12 have not received any letters or leaflets from Agape Church consulting or advising them about the planned new building.

Full details are publicly available at the following link, and details have been replicated on the attached documents.

<https://www.facebook.com/groups/282004488965431/permalink/1177801949385676/>

I'm also attaching a small sample of comments which have been screen shot from public forums on Facebook; this gives you an overview of how the community feel and their level of adamant that they do not want anything built on the green space at the Spar Field.

I really hope this information helps, if you have any questions or would like any further details please don't hesitate to contact me.

All the best
Dawn Derraven

From: Hartshorn, Robert <hartsr@caerphilly.gov.uk>

Sent: 13 September 2021 15:44

To: Dawn Derraven <dawn@rcvuk.org>

Cc: Tara Holloway <tara@rcvuk.org>

Subject: RE: Letter of concern / Complaint regarding Agape Church and the proposed development of a community hall

Hello,

Thank you for your email and for your comments below.

Thank you also for sharing with me details relating to the online petition.

I would also be happy to receive the physical petition. Perhaps it could be scanned in, or dropped to Risca Leisure Centre, or I could make arrangements to collect?

Regards

Rob

Hi Rob

Thank you for the response to our group and for the recent Teams call.

We at RCV are concerned about 3 main aspects of the Agape application to lease the Spar Field and build a new church hall on the area.

The first is the potential loss of the valuable green space. In March this year the Welsh Government approved a net zero climate carbon budget target for 2050. Part of this plan is to protect green spaces, trees and clean air emissions.

The Risca East Play & Learn Community Group who were responsible for building the skate park on the field had planned to plant a border of trees around the Spar Field and WHQS had agreed to supply benches and picnic tables. This is on hold until the lease has been decided, but of course will not happen if the lease is approved.

Secondly, we do believe that claiming to have consulted with the community and claiming to have received support from the community is not the same as being able to evidence consultation and support.

Finally, there are many active and suitable other venues within Ty Sign and Risca that are already facilitating the activities that are planned for the new hall. In fact a new hall would seriously impact the revenue of the existing community halls with the potential to close one or more of them.

We have an online petition signed by 918 residents of Ty Sign in Risca objecting to the loss of the Spar Field. A screen shot is attached.

We also have a physical petition of roughly 500 signatures of people who could not sign the online petition. A copy is available on request.

Additionally, within a stones throw of the planned building location there are 4 other community facilities, 3 of which have large community halls for activities.

Channel View Community Centre has just received around £50k worth of investment from CCBC and also privately to improve the building. It is a thriving community centre with activities booked in for most days.

St David's Centre is similarly placed, although directly across the road from the planned building. There's rooms and a hall available for bookings. It already has some groups and classes booked in but there is capacity for more.

The TLC Cafe has office space for groups to book. They also have had investment from CCBC and are also across the road from the planned build.

Finally, there is the Senior Citizens hall just down the road. CCBC have invested in a new kitchen in the community centre which also has a large hall for hire. They have many groups already booked in but do also have capacity for additional groups.

We at RCV UK are very concerned that the new Agape hall will take group bookings away from the other community centres in the area and this loss of revenue could cause the closure of at least one of the resources currently being used by the community.

Can we respectfully ask that CCBC investigate the claims made within the application from Agape in respect of community support and also alternative facilities please?

We hope this information is useful for the consultation and hope and pray that the right outcome is decided upon.

Thank you in advance.

Kindest regards
Dawn Derraven
RCV UK
Charity Reg Num 1191383
01633 848899
Channel View Community Centre
Hafod y Bryn
Pontymister
Risca
NP11 6LL

change.org



Petition details Comments Updates



Save Spar Field Ty-sign Risca

918 have signed. Let's get to 1,000!



At 1,000 signatures, this petition is more likely to be **featured in recommendations!**



Katie Jones signed this petition



Katie Jones started this petition to Caerphilly council

Sign this petition



In a recent public Facebook Poll we found that:

- 255 people DO NOT want a community centre.
- 13 people DO want a community centre of these, of these 5 people live outside of the area of benefit. 4 of the 13 respondents are members of the Agape Church.
- 172 people DID NOT receive any leaflets from Agape.
- 15 people in our poll live directly overlooking the Spar Field and of those 12 have not received any letters or leaflets from Agape Church consulting or advising them about the planned new building.

Full details are publicly available at the following link, and details have been replicated below.

<https://www.facebook.com/groups/282004488965431/permalink/1177801949385676/>

Dawn Derraven created a poll in Risca UK Community Group.
12 August · 🌐

Out of interest, do you support the building if the new hallway?
Have you received the leaflet posted through your door by AGAPE CHURCH regarding their plan to build The Big House on the Spar Field?
Is your house directly over looking the development field?
Choose all options that apply please.

Option	Votes
<input checked="" type="checkbox"/> Added by you I do not support the building if a new hall on the Spar Field	255 votes
<input checked="" type="checkbox"/> Added by you No I have not received a leaflet from Agape	172 votes
<input checked="" type="checkbox"/> Added by you My house does not overlook the Spar Field	166 votes
<input type="checkbox"/> Added by you My house overlooks the Spar Field	15 votes
<input type="checkbox"/> Added by you I support the building of a new hall on the Spar Field	13 votes
<input type="checkbox"/> Added by you I received the leaflet from Agape about their new hall	13 votes
<input type="checkbox"/> Added by Cath Rattigan Dyer Keep the field for the children as it was intended for	

The following 255 People DO NOT want a community centre built on the Spar Field

Names redacted.

The following 13 people DO support the building of a community centre on the Spar Field:

Names redacted.

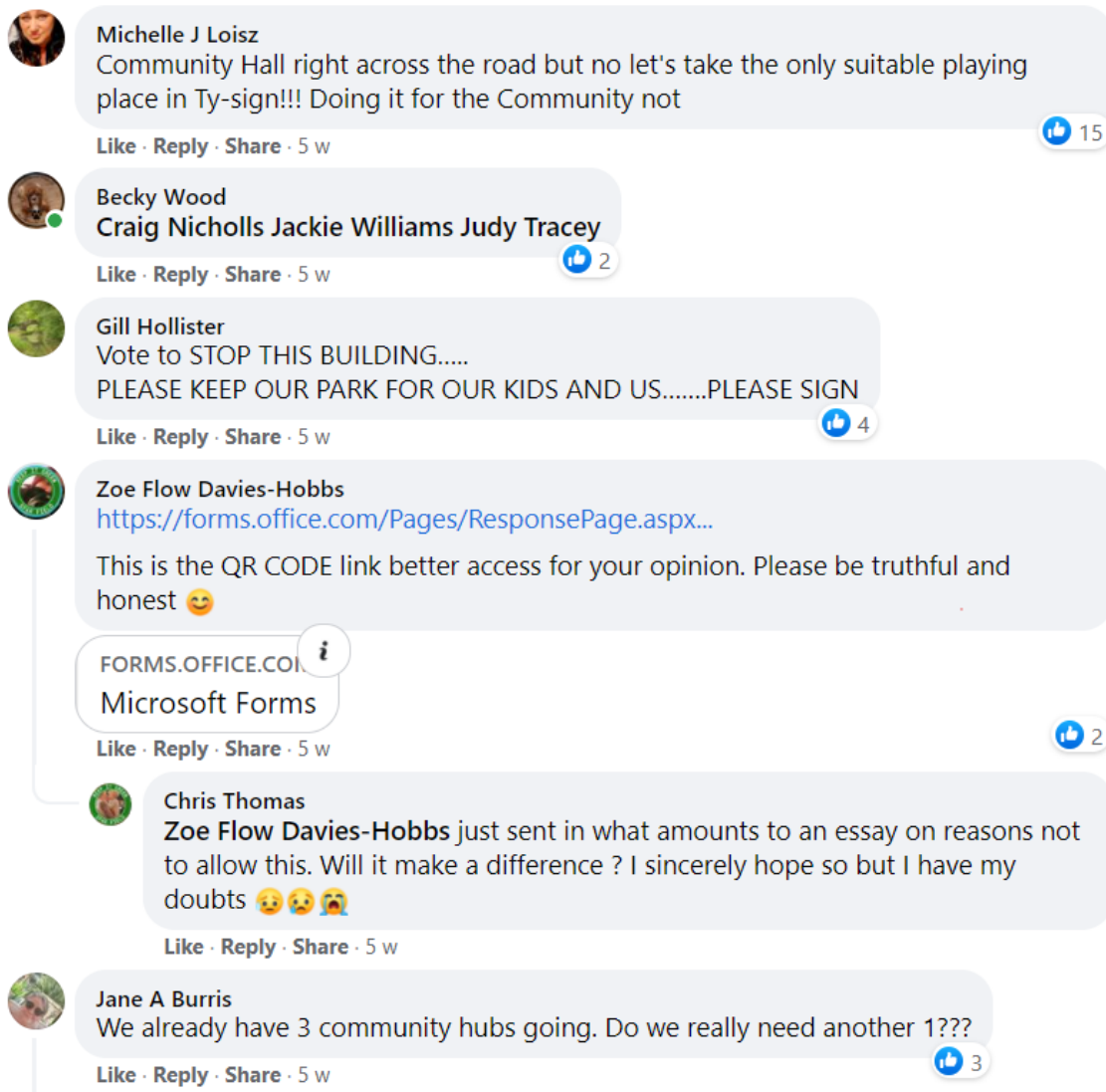
The following people DID NOT receive any leaflets from the Agape Church about the building through their letter box:

172 names redacted.

The following people live in houses directly overlooking the proposed building area:

15 names redacted.

These screen shots were taken from a couple of the conversations which have taken place on FB over the past couple of months. They are in no particular order.



The image shows a vertical list of six Facebook comments. Each comment includes a profile picture, the user's name, the text of the comment, and interaction options like 'Like', 'Reply', and 'Share'. The comments are as follows:

- Michelle J Loisz**: Community Hall right across the road but no let's take the only suitable playing place in Ty-sign!!! Doing it for the Community not
Like · Reply · Share · 5 w (15 likes)
- Becky Wood**: Craig Nicholls Jackie Williams Judy Tracey
Like · Reply · Share · 5 w (2 likes)
- Gill Hollister**: Vote to STOP THIS BUILDING.....
PLEASE KEEP OUR PARK FOR OUR KIDS AND US.....PLEASE SIGN
Like · Reply · Share · 5 w (4 likes)
- Zoe Flow Davies-Hobbs**: <https://forms.office.com/Pages/ResponsePage.aspx...>
This is the QR CODE link better access for your opinion. Please be truthful and honest 😊
FORMS.OFFICE.COM Microsoft Forms
Like · Reply · Share · 5 w (2 likes)
- Chris Thomas**: Zoe Flow Davies-Hobbs just sent in what amounts to an essay on reasons not to allow this. Will it make a difference ? I sincerely hope so but I have my doubts 😞😞😞
Like · Reply · Share · 5 w
- Jane A Burris**: We already have 3 community hubs going. Do we really need another 1???
Like · Reply · Share · 5 w (3 likes)



Alix Chapman

I for one also would love to keep the view from my kitchen window! Would you be as excited if it was to be built outside yours ?!



[Like](#) · [Reply](#) · [Share](#) · 4 w



Carl Walsh

Alix Chapman I've lived in ty-sign for 50 yrs and I wasn't Happy when your new housing estate took the place of fields I walked through.. So hey ho..

[Like](#) · [Reply](#) · [Share](#) · 4 w · Edited



Alix Chapman

Carl Walsh I have only lived in this house 4 years and these houses are now homes ! We all buy/ live in houses and you do so because you like the area / the views etc people need houses ! What we don't need is to lose another field for the building of something that can quite easily be accommodated somewhere else ... hey ho



Michelle J Loisz

Loss of some green space ? as if we have much in Ty-sign as it, but still thats no problem is, whats next kids shouldn't be playing on the park field anyway ?

Like · Reply · Share · 5 w



Jane A Burris

Colin Dexter we have 4 community hubs within a stones throw of each other now. This includes the senior citizens on park road. Also channel view community hall isn't closing so that is available for the groups which are already there and then there is st davids. The tlc is also available for smaller groups and clubs at a reasonable price.

Like · Reply · Share · 5 w



Zoe Flow Davies-Hobbs

Colin Dexter the most important thing in a 'deprived area' to quote your group is green space. Why? Because its FREE and this is the last flat green playing area accessible to many. You live in Abertillery what interest do you have in Ty-sign?

Like · Reply · Share · 5 w



Kate Blakemore

Colin Dexter I actively seek out things that are going on in the local community to share on my page. Over the past 5 years or so I have shared endless posts on Facebook and Twitter about activities and events from local groups like RCV U.K., TLC, Applause Group, Really Cuckoo Society, Risca Male Choir, Gwent Chorale, Fusion Dance, activities, events and concerts in churches such as Bethany, Moriah, Salvation Army, St David's etc, plus other activities such as craft groups, yoga, sporting activities, toddler groups etc.

As far as I'm aware I have not come across information about activities that your group do, so I would question how much you have engaged the local community (and invited them to join in your activities) not just the people in your church.

Like · Reply · Share · 5 w · Edited





Kate Blakemore

I should correct myself a little here- I have heard of, and shared info about, Ty-Sign Tots, but was unaware it was linked to Agape. Maybe that's indicative of the fact that the church has not integrated sufficiently with the local community, as I had no idea it was linked to Agape. Growing up in a Christian family I have absolutely nothing against a church wanting their own 'home', but surely there are other avenues to explore rather than taking up much valued green space...something that is evidently causing strong negative feeling with the local community (surely the opposite of what a church should be about?).

Like · Reply · Share · 5 w



Mary Burgess

Colin Dexter instead of trying to take away from the children why don't you go open the nursing home in Risca which has been closed for I don't know how long, by the looks it's a listed building so can't be knocked down. Surely would be cheaper for you in the long run as no building nessassary. Children can't really play on the streets way too much traffic and reckless drivers around.

Fence the green off make it a safe place for children /families.

Just an idea 💡

Like · Reply · Share · 5 w



Write a public reply...



Zoe Flow Davies-Hobbs

Nobody except the rest of agape know who you are, Let the community speak for themselves. There are 17,000 people in this area and 30 in your group who want to spend half on million on 1 build cutting off a skatepark with a 8ft fence, adding congestion to a already dangerous road. Maybe spend sometime on the field and watch how it is used to appreciate its community value 🙌

Like · Reply · Share · 5 w





Zoe Flow Davies-Hobbs

Nobody except the rest of agape know who you are, Let the community speak for themselves. There are 17,000 people in this area and 30 in your group who want to spend half on million on 1 build cutting off a skatepark with a 8ft fence, adding congestion to a already dangerous road. Maybe spend sometime on the field and watch how it is used to appreciate its community value 🙌

Like · Reply · Share · 5 w



Michelle J Loisz

Colin Dexter So today i hear you plan on keeping this so called building open to 11pm if it goes ahead, How would you like it if someone built right next to your house ? noise pollution right on a estate, your really off your rocker

Like · Reply · Share · 5 w



Tara Holloway Scott

There will 'some loss of green space' but there will apparently 'still be green field'? But not enough! The tiniest amount will remain of the only decent and centralised green space left and it will shadowed by fencing, car park a... **See more**

Like · Reply · Share · 5 w · Edited



Tara Holloway Scott

'Some green space' left!! 🤔 hardly!!



Suzanne Beth Jay

Tara Holloway Scott and cars back and forth to the car park all day and into the night, not safe for playing children!!

Like · Reply · Share · 5 w





Tara Holloway Scott

Sophie Beth Symons with planned wedding receptions and all sorts until 11pm at night every day, expect a lot of traffic and a lot of disturbance but no community fun days or events because there'll be so little green space left, there'll be no space for the community to enjoy any more. But, despite working out of other venues for 'outreach' that the Agape church could still do, they'll have a large hall to enjoy. Meanwhile we'll lose greenspace and probably other local venues too. It's so sad.



Like · Reply · Share · 5 w



Michelle J Loisz

Tara Holloway Scott till 11 pm ? 🙄

Like · Reply · Share · 5 w



Tara Holloway Scott

Michelle J Loisz yup!!

Like · Reply · Share · 5 w

From: TLC RISCA <tlc_risca@outlook.com>

Sent: 06 September 2021 11:34

To: Hartshorn, Robert <hartsr@caerphilly.gov.uk>; Cllr. George, Nigel <GEORGN@CAERPHILLY.GOV.UK>

Subject: Follow up from teams meeting

Good Morning Rob.

I thought I would give you an update of what has been happening on the ground. Nigel is picking up a box of forms completed by the community today as well as the petition.

The community is voicing their opinion and concerns including one lady whos son had to use the air ambulance once and it landed on the spar field and the ambulance drove him from their house to the spar field and used the emergency road. This emergency road will become the access road for the centre so will stop any access for emergency vehicles. The scouts have also quoted that they

withdrew from it as they saw that the community didn't want the building. There is also concern that the council has taken the complete measurements of the field including the slopes and calculated there is enough space left.

There has been a lot of frustration on facebook as well as John Pinkstone has been posting the flyers and when questions have been asked there has been no reply. So people are feeling very frustrated and let down as they aren't getting any information regarding this. They are feeling there is no honesty or transparency. There was a public consultation in Feb 2018 when they were interested in the waste ground opposite Snowdon Close in the TLC. However there hasn't been another consultation regarding the Spar Field. We have had a number of people entering the café asking what is going on on the field and other people are complaining they haven't heard anything about it.

As for the TLC this building will impact us a lot as we are only just getting our groups back. The woodworking classes starting 22nd Sept also we have interest from Oxford House, Breakfast Club, Housing Advice and other groups. We are only a small social enterprise with a small back room so this will cause us a problem to the point we may end up closing completely. We have just had a revamp during lockdown to the sum of £20k and really don't want all of this to go to waste. We have also signed up to Fare Share and get a lot of support from Morrisons for our community fridge. We also have an application going in to GAVO for a luncheon club for the seniors and trying to confirm seated yoga as well. We have already done afternoon teas for them which went down well with the seniors and some mothers as well. Plus some craft days with Cwtsh.

We would also like to be able to use the field to entertain the kids of ty sign with games and crafts, teddy bears picnic and if the weather is nice coffee mornings.

I hope I haven't bored you too much. Also if possible I would like to request another meeting with you before the closing date please. Just so we can touch base and inform you if anything else has come up.

Many thanks

Jane Burriss. Shirley Hobbs and Zoe Davies

Directors

TLC Risca LTD

Sent from Windows Mail

A hard copy petition was also received:

SAVE OUR PLAYING FIELD

We the undersigned wish to register our opposition to CCBC entering into a long-term leasing agreement on Holly Road field (one of the only green spaces) to allow a building to be constructed on this site. Especially as there is already three different community supported facilities in less than 250 yards approx of each other and of this space.

There were approximately 453 signatories to the above petition.

This page is intentionally left blank

Email from Richard Owen 22nd September 2021

Title: Proposed New Community Hall, Ty Sign, Public Consultation Exercise

We have met and spoken on a number of occasions in the last couple of months; now that your consultation period has ended, and knowing that you and your colleagues will be preparing a report for Cabinet, I thought I would set out what Agape believe to be the case for the Council agreeing to grant a lease for the construction of a new Community Hall on Ty Sign.

I will copy this to Ward Members and to the members of the Council's Cabinet with a particular interest in the project, so that they are aware of the detailed situation, as well as seeing the summary that will appear in your report.

The basic question is what 'vision' that the Council has for the improvement of the well being of the community in Risca and specifically in Ty Sign. Up until March 2021 your 'strategy' (based on a Cabinet report in March 2019) was to see if the 60 year old Channel View Hall could at some point be replaced with a new hall. The pandemic exposed and worsened problems in the community, and led to the admirable work done by the RCVUK group. Now that the Channel View Hall is the 'hub' for RCVUK, the decision of your Cabinet Members to keep the building open looks like foresight, but it has left an opening for an additional 'state of the art' community hall, at no cost to the Council, that will build on what has already been achieved.

If Welsh Government announced a fund for Councils to improve community facilities in 'Community First' areas, we suspect that Caerphilly would be one of the first to apply. The offer has been made by Welsh Government, but it is through a funding stream that is only open to charities. Nonetheless it promotes CCBC's asset based approach, feeds into CCBC's wellbeing goals and provides an opportunity to improve the social capital of Ty Sign and Risca.

Our proposal for a new Community Hall is fully funded and (by the end of this month) should have all the consents needed, with a contractor in place, ready to start on site immediately after Christmas. There is no cost or risk involved to the Council. The facilities proposed complement those already available in the area, and there is clearly already a demand for the space proposed.

Our case rests on five facts:

- (1) That your consultation exercise has been fatally flawed by the actions of a few people spreading mis-information on Social Media. You will inevitably therefore have had more votes 'against' the proposal than you would otherwise have had, but it seems inherently wrong that five or six people, none of whom can be held accountable for their comments, can effectively make a decision on behalf of the entire community. Some of the areas of misinformation, i.e. the amount of open space, and the vehicle access to the site have been considered and agreed by your Planning Committee.
- (2) That the Channel View Community Centre has now changed its use to become the base for the Risca Covid Volunteer UK group (RCVUK). Ironically, several of the faults that the building had (and which led the Council to agree it was 'no longer fit for purpose' in March 2019) no longer apply in this new use; but its use as a 'hub' does leave a gap in provision of facilities for the Community as a whole.
- (3) That there is a demand for a new Community Hall, from groups that have not, or could not use the Channel View building or the TLC cafe. We have a list of fifteen groups and uses who could use the new hall and its garden; most of those confirmed in writing, nine months before the centre could be open for business, and without any serious marketing. The new hall will genuinely be available to the community as a whole; funding from the Big Lottery and Welsh Government would not be made available if that were not the case.

- (4) The new hall will be wholly funded by the third sector. There will be no financial risk to the Council in either the development or the operation of the hall; the only 'loss' will be the space occupied on the 'Spar Field' by the building and its car park, which amounts to some 5% of the total area. You will note that one of the proposed uses of the new development is to provide a community garden, which can only realistically happen if the area is fenced off, and properly managed. We have suggested to the Council's valuer that the car park (which is a planning requirement) might be open to those only using the field and not the hall.
- (5) The new hall has been designed to complement the facilities already available in the area, and there is no way that it is going to put any of the others out of business. The Council subsidises the operation of Channel View; the 'Centre at St Davids' is owned and subsidised by the Methodist and Anglican churches, and the Agape Community Church used to provide the majority of the Trustees of the TLC café, so we know exactly how that is financed. Since all of these venues are financially secure, there is actually little incentive for them to identify 'excess demand' that might benefit the community.

Covering these points in more detail:

1. **The consultation exercise.** Immediately before your exercise started, a 'Change.org' petition was launched by a Katie Jones inviting people to vote against the development of the proposed hall, based on the string of lies; listed and rebutted in Attachment (1) to this e-mail. At the last count this petition had nearly 1000 signatures, and must have coloured the views of the residents of Ty Sign. We have asked 'Change.org' to take down the petition, but as yet have had no response. In any case, the damage has been done. Attachment (2) demonstrates the level of confusion that ensued; in August a local resident was warning others that your consultation document must be a fake (even though it had the Council logo on it), presumably because the information in it did not remotely match what she had already seen on social media. Those who have attempted to answer negative comments or clarify mis-information have themselves been subject to insults and abuse; the net effect is that those who might have been in favour of the project have been intimidated into silence. The design of the questionnaire itself may have caused you problems; it was not tied to an e-mail or house address, and at the end there was a button labelled 'Would you like to make another submission?' The Council will have no way of knowing how many duplicate submissions have been made by any one person. During the 'Fun on the Field event' organised by RCVUK, members of the community were being invited to complete the consultation on behalf of others. You attached to the petition document a plan showing the proposed site; this must have been prepared from a draft boundary for the lease, discussed in 2019, but which has not yet been agreed. It was based on an out of date plan, which does not show the current extent of the Skate Park, and it has extended the 2019 draft lease area, for example out into the area of mature trees to the north of the access road, and includes nearly half of the area of the existing skate park. Your plan red-lines an area of 3,800 sq m; but the new hall and its car park will actually occupy only 650 sq m; less than 1/5 of the area shown on your plan. The planning consent granted by yourselves very strictly limits the works we can do at the northern end of the site because of the need to retain existing mature trees, and that area will remain open to the public in exactly the way it is at the moment; but the impression given by your plan is that a large proportion of the 'Spar Field' will be taken out of public use. We have tried to correct the misinformation that has spread, by responding to social media posts and through the distribution of a 'Frequently asked questions' leaflet, both electronically and door to door. We agreed with you that a 'public meeting' would not help, but that a meeting with the very limited number of people making the most noise on Social Media might. Unfortunately, both your colleagues and GAVO refused to chair such a meeting, and the time needed to arrange such a meeting ran out. We were surprised that the papers attached to the consultation did not

include the Integrated Impact Assessment. It would have evidenced against the spread of mis-information and therefore assisted in a clearer consultation.

2. **The change of use of Channel View.** We covered this in some detail in an e-mail to you on the 16th August, and in our meeting that week. Nearly 30% of the floorspace of the Channel View building that was available to all community groups is now occupied solely by RCVUK. The main hall has been reduced in size; a second room, that was available for hire to small groups, has become a store (considerably smaller than the previous store), the kitchen area has been halved in size, the only access to the food bank storage area is through the main hall, and the car park has space for fewer cars than in March 2020. It makes a very good base for RCVUK, but is now considerably less useful as a Community Hall.
3. **Groups interested in using a new hall.** We have designed the new hall to complement, rather than directly compete with, the existing community facilities in the area. Channel View is now the base for RCVUK, with a relatively small hall; the 'TLC café' has a maximum capacity of 16 people and the 'Centre at St Davids' is occupied by a Meithrin every morning in term time in the week. The proposed new hall will have a hall that will seat up to 80 people at tables, with a commercial standard kitchen and a fenced garden available to community groups. We currently have fifteen groups who have expressed an interest in using the new hall; only two of those have previously used Channel View. Part of the 'mis-information' circulated was that we were seeking simply to build a church, but Agape will book space in the new hall in exactly the same way as any other group. We are very keen to involve the wider community in the day to day operation of the hall, and are working with GAVO and Pobl set up a 'Task Group' to achieve that. Attachment (3) to this e-mail lists the interest we have at this stage in the use of the hall and garden.
We have led this project because we believe in the local community, and believe that they deserve better facilities. You will be aware that local churches, including Agape have a track record of being involved in the well being of the community in Risca; chairing the group seeking to re-open public toilets, operating night shelters for the homeless, providing a Street Pastor team, helping people with debt problems, with their mental health, with food banks and so on.
4. **Funding.** None of the funding secured for the new hall will come from local 'rate-payers'. The only money coming from Caerphilly CBC is £5000 from the 'Welsh Churches Fund' which is administered by the Council. The project has been criticised as being 'a waste of public money', but money in the two main funding blocks, from the Welsh Government and the Big Lottery, will both be moved to other schemes, elsewhere in Wales, if not spent in Risca. None of the money secured can be transferred directly to any other local scheme, without the submission and approval of a new application, gaining planning consent if necessary and securing tenders. Our experience is that that is at least a two year process. We have been warned by Welsh Government that the 'Community Facilities Grant' will cease to exist on 31/3/22.
Both the development and the operation of the hall will be 'free' as far as Caerphilly CBC is concerned.
5. **Competition with other facilities.** We have demonstrated above that there is demand for the new Community Hall from groups who cannot, or will not use Channel View. Asking those who are involved in running those centres if there is un-met demand is a bit like asking turkeys if they are in favour of Christmas. The proposed hall is not designed to be competitive, but to be complimentary. In financial terms here is no danger that the new hall will 'put other centres out of business', as has been alleged. RCVUK are currently paying no rent, and have not since they moved into the building. The Council pay for all structural repairs to Channel View, plus the costs of insurance, have invested in the condition of the building, and pay most of the caretaker's costs. On top of that, the Management Committee have £85,000 in the bank. The 'Centre at St David's' has existed quite happily for years on the receipt generated by its use by a Meithrin, and the building is maintained by the Methodist and Anglican Churches. Members of the Agape

Community Church used to be Trustees for the 'TLC' so we are aware of the financial status of that centre. There again, the rent is subsidised by the Council.

We suspect that a majority of those who have 'voted' in your consultation will say that they are against a lease being granted. A large number of them will, unfortunately, have been misled by the campaign on social media. It's very easy to click a box on a questionnaire without checking what the facts actually are, or having the vision to see what might actually be achieved. We simply ask that you set against those 'votes' the fact that part of the funding package for our proposed hall is over £100,000 offered by individuals who are interested enough in the future of the community to put their own money on the table. This opportunity to build a new Community Hall, if lost, is unlikely to come again.

Yours sincerely

Richard Owen
Trustee; Agape Community Church, Ty Sign

Attachment 1: Petition started by Ms Katie Jones on 'Change.org

PETITION

The planning permission given to Agape Church to build their new Ty Sign Church Hall on the Spar Field depends on Caerphilly Council allowing them to have a lease agreement for that space.

Whether they get the lease or not is going to public consultation.

We believe that the lease should NOT be granted because this is a valuable piece of green space in this area. Generations of children have played on this field which is next to the skate park, ball court and play park.

We do not want to lose this green space and certainly do not want vulnerable people suffering from substance misuse to be invited to our children's park areas, which is their intended use of the building.

The facilities they claim to provide once the church is built are already in place elsewhere, and more groups and charities are supporting the community than ever before.

Agape have closed over the pandemic while other local groups have come together to provide essential support in our area.

We also believe that the applications submitted for both planning and funding were highly misleading and in fact the details were in some areas blatantly incorrect.

RESPONSE

It is not, and never has been a 'Church Hall'. The funding that has been secured is only available for a hall that is open to the entire community.

The petition gives the impression that all of the Spar Field is to be used; actually only 5% of the area will be used for the hall and the car park; and the latter may be available to all users of the field.

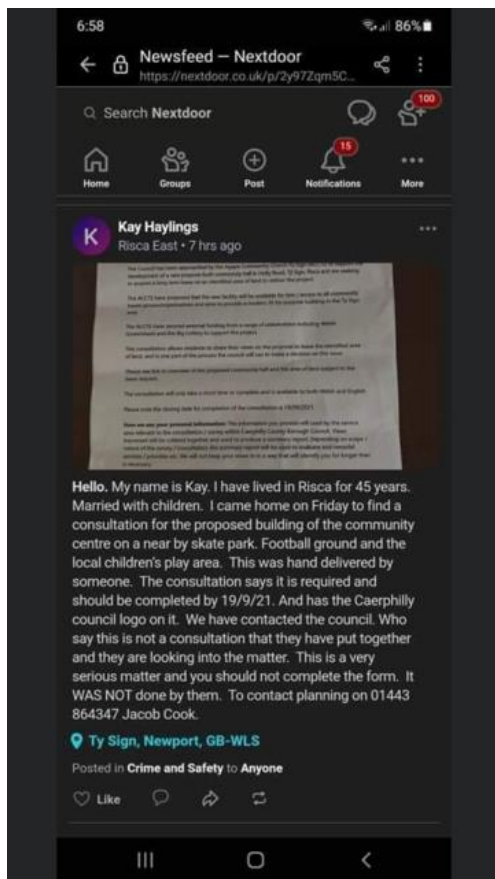
This is not and never has been an intended use of the building. The church, with help from the national charity 'Christians against poverty' have run a course called 'Fresh Start' designed to help people with 'life controlling issues', such as smoking, eating disorders, gambling; but not drug taking. The courses have been run for the past 7 years in the TLC shop without local comment.

The facilities we propose will complement other existing facilities.

The Agape Community Church continued operating throughout the pandemic, meeting via 'Zoom', helping people with debt, running activities for children and toddlers and those suffering from mental health problems and delivering food parcels.

No evidence provided; both planning and funding applications are available for scrutiny

Attachment 2



Attachment 3: Possible users of 'Ty Mawr Community Hall'

September 2021

User	Use	Could they use Channel View?	Did they use Channel View before March 2020?	Confirmation of interest in writing?
Community garden	Facility for all ages of the community to garden together. Fenced to provide security (for both plants and users); linksto 'green prescribing', mental health work and work with both OAP's and children.	No. The open space immediately adjacent toChannel View is extremely limited and contaminated with asbestos; space close to TLC café and the 'Centre at St Davids' is steeply sloping and inaccessible to thedisabled.	No	Yes
After School club	Commercial operation to provideadditional capacity for parents, supplementing individual childminders.	No. Not close enough to the Ty Sign primaryschool to be useful.	No	No
'Ty Sign Tots'	Mothers and Toddlers group. Up to 30adults (parents and carers) and 30-40 children aged 0-4	Yes, but the group was running out of space inthe CV hall and car park in March 2020, and interest has grown since.	Yes	Yes
Risca Community Comprehensive School	Outreach facility for both pupils and families.	No interest expressed in using Channel View.	No	Yes
Age Cymru	Could be a wellbeing hub for all ages. Opportunity to provide digital inclusionsessions, lunch club with activities, advocacy support, volunteer training events etc	Would need a kitchen capable of serving ameal to70-80 people, plus an ancillary 'interview' space.	No	Yes

Dog Training	Original pet dog Co: Dog training.	Need both hall and adjacent enclosed garden space.	No	Yes
Youth work	No yet defined: could be a regular booking or flexible. No doubt of level of need.	Proximity of skate park, 'MUGA' and open space makes new hall more attractive.	No	Yes
Mental Health charity: 'Gofal'	They work closely with residents of HollyRoad flats. Up to March 2020 used CCBC Housing office.	No. Needs interview space separate from CCBC Housing office but close to flats.	No	Awaiting confirmation

Innovation Centre for Enterprise in Wales	Training for entrepreneurs	No. Nearest existing facility is at Llanhilleth.	No	Yes
Welsh Language Education	We understand that Menter Caerffili are seeking suitable accommodation in Riscato extend its provision for Children.	No interest expressed in Channel View.	No	Awaiting confirmation
Pobl	Meetings with social housing tenants	No	No	Yes
Community Education	'Welsh for Adults' adult community education course.	No interest expressed in Channel View.	No	Awaiting confirmation
Christians against Poverty	Base for debt counselling and financial advice service	Have used TLC café in the past, but have outgrown space; Channel View not practical because there is now no interview space.	No	Yes
Agape Community Church	Community Church: Sunday mornings and occasionally in mid week: 30-40 people on Sundays	Yes; but it's no longer as convenient because the hall is smaller and there is no separate room (used for 'Sunday School').	Yes	Yes
Private parties		The booking Secretary for Channel View has said on social media (21/9/21) that the hall is	Yes	Yes

		booked up for parties until Christmas.		
--	--	--	--	--

This page is intentionally left blank



CABINET – 13TH OCTOBER 2021

SUBJECT: REGENERATION BOARD – PROJECT PROPOSALS

REPORT BY: CORPORATE DIRECTOR FOR ECONOMY AND ENVIRONMENT

1. PURPOSE OF REPORT

- 1.1 To recommend the allocation of £150k from the Regeneration Project Board Development Fund to fund the appointment of a Multi-Disciplinary Consultant Team to support Council staff and facilitate the delivery of the Caerphilly Town 2035 Plan.

2. SUMMARY

- 2.1 At the meeting on 30th May 2018, Cabinet agreed that a Regeneration Project Board would be set up with a cross-party political representation of Councillors plus key officers. This group is supported by a Regeneration Assessment Panel consisting of officers from a range of service areas. An initial sum of £300k was allocated to the Project Board.
- 2.2 The Regeneration Assessment Panel have met on numerous occasions to consider the prioritised list of capital projects, which have been identified by the Board to move to the Assessment Stage. Following subsequent Cabinet Approvals, since February 2019 numerous projects have been endorsed with financial assistance provided (where necessary) from the Regeneration Project Board Development Funds.
- 2.3 During January 2019 Cabinet resolved to release £1.2m of reserves for the Regeneration Board prioritised projects which had a budget of £300k. This was supplemented in April 2021 when the Cabinet resolved to allocate an additional £1m to the Development Fund budget. Cabinet on 7th July 2021 resolved that a further £1.m should be allocated to the Board for prioritised capital regeneration projects. This decision was approved by Full Council on 13 July 2021. This brings the total allocated Development Fund budget to £3.5m.
- 2.4 In December 2020, Cabinet resolved to allocate £50k seed money to the Regeneration Board for 2020/21 to progress concepts and ideas under the 'Licence to Innovate' Scheme. Due to the success of the initiative, Cabinet on 7th July 2021 approved a proposal for a further £200k to be set aside for the scheme. The total funding allocated

to the Regeneration Project Board, including 'Licence to Innovate', has therefore been £3.75m.

- 2.5 This report seeks Cabinet approval for the allocation of £150k Regeneration Development Funds towards the appointment of a Multi-Disciplinary Consultant Team for a period of up to three years to support Council staff and facilitate the delivery of the Caerphilly Town 2035 plan
- 2.6 The above request would leave an active overall Regeneration Development Fund balance of £1.287m and a balance of £209K in the 'Licence to Innovate' Fund.

3. RECOMMENDATIONS

3.1 That Cabinet:

- i) Agree that £150k of the Regeneration Project Board Development Fund be allocated to progress the procurement of a Multi-Disciplinary Consultant Team for a period of up to three years. The appointed Team will support Council staff and facilitate the delivery of the Caerphilly Town 2035.

4. REASONS FOR THE RECOMMENDATIONS

4.1 To facilitate the delivery of the Council's ambitious Caerphilly Town 2035 Plan.

5. THE REPORT

- 5.1 On the 30th May 2018, Cabinet agreed that Council Officers convene a Regeneration Project Board. The Terms of Reference of the Board were approved by Cabinet at the same meeting.
- 5.2 At the subsequent June 2018 Board meeting a Project Prioritisation Toolkit was approved for the Board to prioritise projects and this was subsequently agreed by Council on 17th July 2018. A Regeneration Assessment Panel has been set up to assess each of the projects using this toolkit. The Assessment Panel is an internal Officer panel from a wide range of Service Areas set up specifically to assess prioritised strategic physical regeneration schemes.
- 5.3 The Regeneration Assessment Panel has met several times to consider a list of previously prioritised capital projects. These, for the most part, have been evaluated and considered by the Regeneration Project Board before being presented to Cabinet for endorsement and funding (where required) from the available Development Funds.
- 5.4 Initial funding of £300k was allocated to the Regeneration Board Development Fund in 2018. In January 2019 Cabinet resolved to release £1.2m of reserves for Regeneration Board Projects and then in April 2021 the cabinet resolved to allocate a further £1m. This has been recently supplemented by an additional £1m approved by the Council in July 2021, bringing the Total Development Fund budget to £3.5m. This has allowed additional projects to be considered for development support, prioritisation and funding. [Please refer to Appendix 1]
- 5.5 In December 2020 Cabinet approved the Council's Commercial and Investment

Strategy and resolved that a further £50k from the Education and Corporate Services reserves be approved to progress 'Licence to Innovate' ideas via the Regeneration Project Board. In July 2021 Cabinet approved proposals to set aside a further £200k to the 'Licence to Innovate' scheme. All 'Licence to Innovate' project ideas are subject to a Panel Assessment to determine their eligibility prior to their presentation to the Regeneration Board.

- 5.6 The Regeneration Board Meeting held on 7th September 2021 considered the following project proposal for funding from the Development Fund budget:

(A): CAERPHILLY PLACE MAKING PLAN 2035 – DELIVERY

▪ **Total Project Cost Estimate (£): £300k**

▪ *Funding Secured* £0 (An application for £150k has been submitted to Welsh Government to match-fund the resources to be provided by CCBC which will be considered at their October Panel)

▪ **Request for funding from Regeneration Project Board: £150k**

- 5.7 Caerphilly is the Council's Principal Town Centre and is well established as a key economic, cultural and social driver for the County Borough and a strategic tourism destination within the wider Cardiff Capital City Region.

- 5.8 The Caerphilly Town 2035 Plan is the Council's bold and ambitious vision for the future of Caerphilly Town Centre. The Plan identifies a series of short, medium and long-term projects to be implemented over the next 15 years. A co-ordinated effort between Public, Private and Third Sector partners will be required to realise the significant social, environmental and economic opportunities identified for the Town Centre in the draft Plan.

- 5.9 The 2035 Plan outlines the following aims, objectives and ambitions for the future regeneration of Caerphilly Town Centre: -

- **A RENOWNED TOURISM DESTINATION** - that fully exploits the presence of Caerphilly Castle to provide a unique visitor experience that people want to revisit.
- **A CONNECTED TOWN** - with a modern transport interchange that provides a landmark entrance to the town, connects the town to the wider region and provides a base from which to actively explore the surrounding landscape
- **A BUSINESS DESTINATION** - with a landmark economic hub at the transport interchange, a bespoke development corridor that connects the interchange with a consolidated Caerphilly Business Park, and a series of flexible workspaces in the town centre.
- **A GREAT PLACE TO LIVE** - an excellent environment for existing and new residents that is based on a choice of new homes, accessible workspaces, and diverse leisure choices.
- **A LEISURE TOWN** - that provides a varied retail and leisure offer that satisfies everyday requirements, but also includes bespoke products and great food and refreshments day and night.

- **INCLUSIVE AND ENGAGING PUBLIC REALM** – with a network of unique green streets and spaces that optimise the views of the historic Caerphilly Castle, provide space for outdoor activity and are safe and accessible
 - **A SMART TOWN** – with excellent digital infrastructure for new workspace and a distinctive digital brand that businesses, public services, residents and visitors can inform and benefit from.
 - **A LOW CARBON TOWN** – designed for the energy needs of the 21st Century to facilitate low carbon use, renewable energy and travel, low environmental impact and adaptability.
- 5.10 The Council’s Regeneration and Planning Service has developed the 2035 Plan in partnership with Welsh Government and it is anticipated future funding applications will be focused on Welsh Government’s Transforming Towns programme. In addition, UK Government Funding Programmes including the Levelling Up Fund and the Shared Prosperity Fund will also be targeted. Private Sector investment into the Town Centre will be actively encouraged and pursued.
- 5.11 The 2035 Plan identifies a total of 62 projects within Caerphilly town centre that will provide a comprehensive regeneration and development platform to encourage growth, improve the social, economic and environmental performance of the town centre and support the health and well-being of its residents and business communities.
- 5.12 The 2035 Plan sets out a bold and comprehensive transformation of the town that will create an environment that meets the aspirations of the people of Caerphilly. The aims of the Plan are particularly relevant in the context of the recent dramatic global, national and regional challenges to the role and purpose of town centres as a result of the COVID 19 pandemic.
- 5.13 A summary of some of the Plan’s key project proposals is presented below: -
- **Caerphilly Transport Interchange** – creation of a new Transport Interchange at the site of the current Bus and Train Stations to meet the growth aspirations of the South Wales Metro
 - **Leisure Quarter** – creation of a high quality “Leisure Quarter” development to provide modern and flexible mixed- use accommodation on the site situated opposite Caerphilly Castle on Cardiff Road.
 - **Public Realm Improvements** – to improve the visual amenity of the town and to link the major regeneration projects seamlessly.
 - **Introducing additional residential accommodation into the Town Centre** – a number of projects within the plan seek to introduce new living accommodation into the town centre.
 - **Boutique Hotel, Park Lane** – CCBC, with support from Welsh Government, has purchased the former Spec Savers retail unit and adjacent site on Cardiff Road to facilitate the development of a new “Boutique Hotel” by the Private Sector.

- 5.14 Funding from the Regeneration Board has been requested to appoint a suitably experienced and qualified Multi-Disciplinary Consultant Team for a period of three years, to further develop the high-level proposals in the Plan.
- 5.15 The appointed Team will support the Council to progress projects identified within the Caerphilly Town 2035 Plan to detailed design stage (e.g. RIBA Stage 4) where appropriate, to ensure the prioritised projects are underpinned by the necessary feasibility and design work and supported by a fully costed phasing strategy.
- 5.16 The proposed Team would include the specialisms of Architects, Urban Designers, Development & Valuation Specialists, Engineers, Quantity Surveyors, Ecologists, Energy (Carbon Reduction) specialists, Economic and Financial Management consultants, Public Art and Legal Advisors.
- 5.17 External funding will be sought for the delivery of the identified projects within the Plan (see 5.13). The Multi-Disciplinary Team will assist Council officers in the preparation of compelling and robust bids to external funders (incl. Welsh Government, UK Government) supported by the required technical and feasibility studies, detailed design concepts and financial cost estimates.
- 5.18 The Multi-Disciplinary Team will provide the wide range of skills required for progression of the critical feasibility and design stage for the projects. It is anticipated the work of the Team will initially focus on the following key tasks and activities: -
- Detailed design and viability assessment of future options for the proposed 'Leisure Quarter' redevelopment at Cardiff Road;
 - An Options Appraisal to investigate opportunities for a new market space in the town centre
 - Detailed design and phasing strategy for the implementation of an Active Travel Plan across and through the town;
 - General support to facilitate the progression of other projects identified within the Plan that have appointed an independent design team (e.g. the Transport Interchange) along with other projects that will contribute to the delivery of the Plan by third parties (private sector, CADW etc);
 - Creation of a Public Art Strategy across the town centre;
 - Following a WelTag Stage 2 Report, focus on the car parking, traffic movements and road configuration through the town.
 - Progression of the design of Public Realm interventions identified within the Plan.
 - Incorporation of the feasibility study for the site adjacent to the Transport Interchange
- 5.19 The consultant team can also be used to support projects and initiatives that may be developed throughout the Borough from the Council's emerging Place-shaping Plan or other large projects. For clarity, no funding allocation for the Place-shaping Plan is included within this request for approval – additional funds would need to be secured.
- 5.20 It is anticipated the appointment will be made through the use of an approved Procurement Framework in partnership with the Council's Procurement Team.

- 5.21 Following appointment, the Multi-Disciplinary Consultant Team will be managed by the Placemaking Programme Manager and Senior Officers from the Regeneration and Planning Service.

RPB Decision: Project Approved. It was agreed that £150k be allocated towards the project.

- 5.22 An application for £150k has been submitted to Welsh Government to match-fund the resources to be provided by CCBC. This application is due to be considered at WG's October 2021 Panel.

- 5.23 If Cabinet are minded to approve the recommendations contained in the Report, the residual funding available to the Regeneration Project Board is:

- Regeneration Development Fund £1,287m
- License to Innovate Fund £209k

6. ASSUMPTIONS

- 6.1 This report assumes that the identified projects, once supported by Cabinet, will be developed further and where applicable implemented, with assistance from appropriate sourced and secured external funding.

- 6.2 The report also assumes that match-funding of £150k will be approved by Welsh Government towards the £300k total cost of the proposed Multi-Disciplinary Consultant Team.

7. SUMMARY OF INTEGRATED IMPACT ASSESSMENT

- 7.1 The recommendations contained in the report have a neutral overall impact, however schemes supported through the board will be subject to full IIA's. In short, each project supported and developed will have its own IIA undertaken as it is developed.

8. FINANCIAL IMPLICATIONS

- 8.1 An overall project Development Fund of £3.5m has been previously approved to allow a project team of officers to develop projects ready for implementation when funding becomes available.

- 8.2 Development Funds of £2,063m have previously been approved and allocated to projects. If the current request of £150k contained in this Report is approved, then £1,287m remains from the total budget allocation for funding future projects.

- 8.3 A Licence to Innovate budget of £250k has previously been approved, of which £41k has now been allocated by the Regeneration Board. This leaves a residual balance of £209k.

- 8.4 An application for £150k has been submitted to Welsh Government to match-fund the resources to be provided by CCBC for the proposed Multi-Disciplinary Consultant Team. The application will be considered at their October Panel meeting.

9. PERSONNEL IMPLICATIONS

- 9.1 There will be a requirement for Officers from Regeneration & Planning, Transportation & Infrastructure, Corporate Policy, Housing and Corporate Services Divisions within the Authority to dedicate human resources to the project activities outlined in order to progress them, the level of which depends on the status of each project.
- 9.2 It is envisaged that the appointed team of external consultants will generally support Council Officers in the delivery of the 2035 Plan for Caerphilly Town Centre where either (i) specific technical requirements are not immediately available from in-house teams (ii) or resources are not available to meet the requisite funding timescales. The same will be true for other Place-shaping plan/large projects
- 9.3 Following appointment, the Multi-Disciplinary Consultant Team will be managed by the Placemaking Project Manager and Senior Officers from the Regeneration and Planning Service.

10. CONSULTATIONS

- 10.1 All comments received have been incorporated into the report

11. STATUTORY POWER

- 11.1 The Planning and Compulsory Purchase Act 2004.
- 11.2 The Local Government Acts 1998 and 2003.
- 11.3 Town and Country Planning Act 1990

Author: Glenn Cooper, Principal Regeneration Project Officer, Regeneration and Planning

Consultees: Cllr Eluned Stenner, Cabinet Member for Performance, Economy & Enterprise (and Chair of the Regeneration Project Board)
Mark S. Williams, Corporate Director for Economy & Environment
Richard Edmunds, Corporate Director of Education and Corporate Services
Dave Street, Corporate Director of Social Services and Housing
Stephen Harris, Head of Financial Services & Section 151 Officer.
Marcus Lloyd, Head of Infrastructure
Robert Tranter, Head of Legal Services/Monitoring Officer
Sue Richards, Head of Education Strategy & Finance (Interim Head of Transformation)
Lynne Donovan, Head of People Services
Rhian Kyte, Head of Regeneration and Planning
Allan Dallimore, Regeneration Services Manager
Anwen Cullinane, Senior Policy Officer
Hamish Munro, Caerphilly Place Making Programme Manager
Paul Hudson, Business, Enterprise & Renewal Team Manager

Appendix 1 List of Approved Projects and Funding Allocations

ANNEX 1. LIST OF APPROVED PROJECTS AND FUNDING ALLOCATIONS

CAPITAL PROJECT	RPB APPROVED ALLOCATION £
<u>TRANCHE 1</u>	
LLANBRADACH PARK & RIDE	£150,000
CAERPHILLY TRANSPORT INTERCHANGE	£0
OAKDALE BUSINESS PARK	£100,000
PARK LANE, CAERPHILLY	£40,000
Sub Total Tranche 1	£290,000
<u>TRANCHE 2</u>	
YSTRAD MYNACH PARK & RIDE	£0
CWMCARN FOREST	£75,000
PENTREBANE STREET, CAERPHILLY	£37,500
Sub Total Tranche 2	£112,500
<u>TRANCHE 3</u>	
MASTERPLAN FOR PUBLIC SECTOR LAND IN YSTRAD MYNACH	£0
TY DU NELSON (ADDITIONAL UNIT)	£40,000
PENALLTA COLLIERY - FORMER POWERHALL BUILDING	£0
CAERPHILLY CASTLE - NEW COACH FACILITIES	£50,000
Sub Total Tranche 3	£90,000
<u>TRANCHE 4</u>	
LLANBRADACH PARK & RIDE (REVISIT)	£200,000
YSTRAD MYNACH PARK & RIDE (REVISIT)	£170,000
Sub Total Tranche 4	£370,000
<u>TRANCHE 5</u>	

ANNEX 1. LIST OF APPROVED PROJECTS AND FUNDING ALLOCATIONS

CAPITAL PROJECT	RPB APPROVED ALLOCATION £
TRI THEMATIC URBAN CENTRE FUNDS	£20,000
CWM IFOR SOLAR FARM REQUEST	£0
Sub Total Tranche 5	£20,000
<u>TRANCHE 6</u>	
WG TRI TOWN CENTRE COVID 19 RESPONSE	£142,700
WG TRI CAERPHILLY PLACE MAKING PLAN	£126,000
OAKDALE BUSINESS PARK PLATEAU 1	£85,000
CAERPHILLY WORKMENS HALL & INSTITUTE	£110,000
CWM IFOR SOLAR FARM	£46,000
Sub Total Tranche 6	£509,700
<u>TRANCHE 7</u>	
A468 / B4600 BEDWAS BRIDGE ROUNDABOUT IMPROVEMENT	£107,000
PEN MARCH WIND FARM - MEMORANDUM OF UNDERSTANDING	£0
LICENCE TO INNOVATE - COFFI VISTA	£20,689
Sub Total Tranche 7	£127,689
<u>TRANCHE 8</u>	
LICENCE TO INNOVATE - LLANCAIACH FAWR	£10,000
LICENCE TO INNOVATE – COMMERCIAL TRAINING	£10,000
CWM IFOR SOLAR FARM	£434,000
Sub Total Tranche 8	£454,000
<u>TRANCHE 9 SUBJECT TO CABINET APPROVAL</u>	

ANNEX 1. LIST OF APPROVED PROJECTS AND FUNDING ALLOCATIONS

CAPITAL PROJECT	RPB APPROVED ALLOCATION £
BARGOED ENFORCEMENT ACTION PLAN	£100,000
BIRDS SITE RISCA - DEVELOPMENT PLAN	£30,000
Sub Total Tranche 9	£130,000
<u>TRANCHE 10 SUBJECT TO CABINET APPROVAL</u>	
CAERPHILLY PLACE MAKING 2035 DELIVERY	£150,000
Sub Total Tranche 10	£150,000

This page is intentionally left blank